

JAS. WILLIAMSON,
Warehouseman and Commission Merchant,
Cor. PRINCE and COMMON Sts.,
MONTREAL.

ENVELOPES

Stamped in **RELIEF COLORS**,
NO CHARGE FOR DIES.

GEORGE BISHOP & CO.,
69 ST. JAMES ST., MONTREAL.

THE CANADA FIBRE CO.,
Office & Factory 582 William St. Corner Canning.
Manufacturers of
BED COMFORTERS,
Curled Hair, Japanese Hair and Canada Fibre,
Hair and Fibre Openers.

MONTREAL

WALL PAPER FACTORY.

COLIN McARTHUR & CO.,
WALL PAPER MANUFACTURERS,
Were awarded the First Prize, Silver Medal for
Best Selection of Wall Paper, Canadian make.
They have just issued their new designs for 1885.
The Trade will be waited on in a few days.
FACTORY—1 to 21 VOLTIGEURS ST.,
MONTREAL.

ALWAYS THE BEST
The **RAINER PIANO.**
Where we have no Regular Agent,
the usual Agent's discount will be al-
lowed to Cash Purchasers.
Catalogues Free. Address :
Sweetnam & Hazelton,
Guelph, Ont.
AGENTS WANTED.

GUELPH CARPET WORKS.

J. & A. ARMSTRONG & CO.
MANUFACTURERS OF
WOOL UNION AND DAMASK CARPETS.
OF NEW PATTERNS AND DESIGNS,
GUELPH, Ont.

Carleton Place Advertisements.

Central Canada Machine Works.
GRAHAM, BROWN & CO.,
CARLETON PLACE, ONT.,
MANUFACTURERS OF
Steam Engines, Water Wheels, Gearing, Shafting,
Pulleys and Castings of all kinds in Iron and Brass.

Carleton Place Stove Foundry.
D. FINDLAY & SONS,
CARLETON PLACE, ONT.,
Manufacturers of Stoves, Ploughs, Agricul. Furnaces,
Coolers, Road Scrapers, Field Rollers, &c.
Job work of all kinds promptly executed.

TRUNK AND HARNESS DEPOT.
P. C. POTTER,
MANUFACTURER OF ALL KINDS OF HARNESS, ETC.
ORDERS SOLICITED.
Bridge Street, Carleton Place, Ont.

GEO. H. LABBE & CO.,
Importers and Manufacturers of
Chairs, Rockers, Bedsteads, Bedroom, Parlor
and Dining room Furniture and Bedding.
(WHOLESALE.)
NO. 445 ST. JAMES STREET.
(Formerly Bonaventure Street.)
MONTREAL, P.Q.

J. WRIGHT & CO.,
Manufacturers of

ART & CHURCH
FURNITURE,

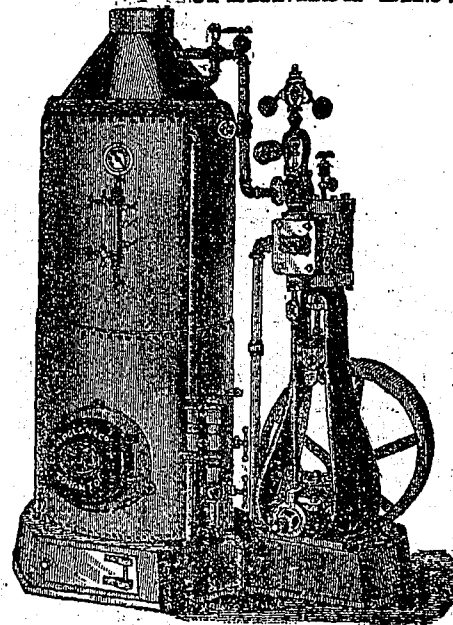


Bank & Office Fittings,
Inlaid Floors,
Wood Carpeting.
And all kinds of Fancy Wood-
work. Agents for
J. T. LOW'S Art Tiles,
BEAVER HALL HILL.

MANUFACTORY,
11 to 17 Hermine St., Montreal.
Illustrated catalogues of Inlaid Floors on
application.

WM POLSON & CO.

81 ESPLANADE EAST, TORONTO, ONT.



Engine and Boiler Makers

AND

MACHINERY BROKERS.

STEAM YACHT MACHINERY

A SPECIALTY.

Upright Engines and Boilers from
4 to 20 H.-P.

Second-Hand Engines and Boilers, and Machin-
ery of all kinds, Bought, Sold and Exchanged.
We thoroughly overhaul and guarantee
all work done by us. Importers and
Dealers in

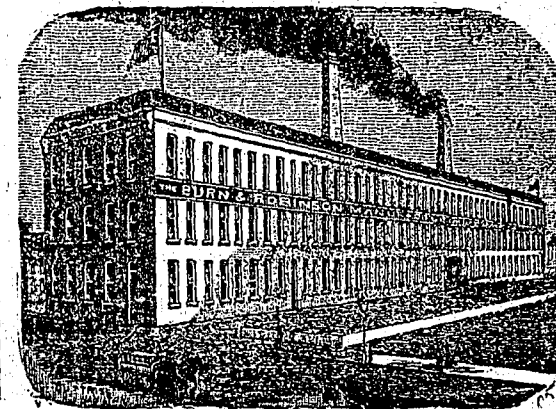
Iron and Wood-Working Machinery,

SHINGLE & SAW MILL MACHINERY,

STEAM-PUMPS, INJECTORS, HEATERS,
JUDSON GOVERNORS.

Prices on application.

THE BURN & ROBINSON MANFG. CO.,
W. S. Burn. HAMILTON, ONT., W. W. Robinson.
(Successors to the J. H. Stone M'fg. Co.)



Manufacturers and Dealers in

Tubular Lanterns,

Japanned & Brass

BIRD CAGES,

Plain and Re-tinned, Pressed
Stamped and Spunware, Copper, &
Pits, Finners' Trimmings,
Milk-Can Trimmings,
Banner Lamp and
Tubular Lantern
Burners.

Cooke's Sash Supporter & "Sash" Lock
for House & Car Windows.

**Sundries, See our Cata-
logue.**