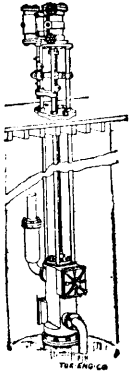


# Northey Mnfg. Co. Ltd.



# Pumps

& HYDRAULIC  
MACHINERY

FOR MINING.

SINKING  
PUMPS

... A SPECIALTY.

KING STREET SUBWAY  
TORONTO.

## MINING PROPERTIES FOR SALE.

Advertisements under this heading cost Two Cents per word.

### GOLD.

**A SNAP**—Gold property for sale. \$1,500 cash. Two strong well mineralized veins panning gold; two and six feet wide, running directly through the property. In the Rainy River District, near the proposed Rainy River Railway. Apply to Box No. 32, MINER Office.

**WE** have several good Gold Mining Properties and a number of Prospects for sale at reasonable prices. We are the largest holders of gold mining locations in Canada. For reports, prices and particulars apply to Mines Contract Co., Office 75, Canada Life Building, Toronto.

**TWO** Gold Locations on Witch Bay, Lake of the Woods. Owners will sell either the whole or half interest. For report and price apply to Box 21, Canadian Miner Office.

**GOOD** Gold Mining Location for sale near the Scramble Mines. Good report. Only a few miles from Rat Portage. For price, etc., apply to Box 12, Canadian Miner Office.

### SILVER.

**SILVER** Mining Location, 300 acres, on the Pic River, North Ontario. Will sell either whole or part interest. Apply Box 4, Canadian Miner Office.

### NICKEL.

**SEVERAL** First-class Nickel Properties for sale, situated in the following Townships: two in Waters, four in Graham, and one in Dennison, all near the C.P.R. in the Sudbury District. For particulars apply Box 2, Canadian Miner Office.

**A DEVELOPED** Nickel Mine for sale in the Township of Nairn, with first-class report. For terms, etc., apply Box 19, Canadian Miner Office.

### MICA.

**FIRST-CLASS** White Mica Property, 200 acres, in the Township of Methuen, Co. of Peterboro', for sale. This is a rare opportunity. Price moderate. Apply Box 7, Canadian Miner Office.

**WHITE** Mica Property for sale in the Township of Hungerford, Ontario, adjoining Sheffield Station on the C.P.R., with good report. For particulars apply Box 3, Canadian Miner Office.

### IRON.

**A 1 IRON** Location, 160 acres, for sale, near railway N.E. Ontario. Price reasonable. Apply Box 32, Canadian Miner Office.

### PROPERTIES FOR SALE.

**CALGARY**—Lots 31, 32, 33 and 34, Block 90, Section 16, on Grenfell Avenue. Thriving town of 3,876 population. Each lot measures 25 feet frontage by 100 feet deep, to a line 20 feet wide. Free from encumbrance. No back taxes. This is a most desirable town property; and a snap. Apply Box 10, CANADIAN MINER Office.

### SITUATIONS WANTED.

Advertisements under this heading cost Two Cents per word.

**DRAUGHTSMAN**—Experienced graduate of Technical School desires situation. Address S., Box 332, Port Hope, Ont.

**TWO** practical miners open for engagement. Would prefer Lake of the Woods District. For particulars regarding salary, etc., apply Box 27, MINER Office.

### MISCELLANECUS.

**PARTIES** having Gold, Silver, Nickel, Copper, Iron, Mica or any other mining properties to dispose of should forward particulars at once to the Mines Contract Company, 75 Canada Life Building, Toronto.

### JOHN GALT, C.E. & M.E.

(Member Can. Soc. C.E.)  
Consulting Mining Engineer  
Office: Canada Life Building, - TORONTO  
Examinations made on Mining Properties.  
Supervision of Mining and Milling

**Seine River Gold Fields**  
**Manitou Gold Fields**  
**Rainy Lake Gold Fields**

For all information address

**WALTER J. KEATING**  
SOLICITOR, ETC.

FORT FRANCES, - ONTARIO.

A wide connection with the most reliable prospectors and mining experts in the above Gold Fields. The purchasing or obtaining options on gold properties a specialty. Several fine properties on hand for sale or to be bonded.

In replying to advertisements in this paper, mention The Canadian Miner



## Mining Laws of Ontario.

**ANY** person may explore Crown Lands for minerals.

Mining lands may be taken up as surveyed locations or staked claims.

Locations range from 40 to 320 acres. Claims range from 10 to 20 acres on vein or lode.

Locations may be acquired in fee or under leasehold.

Price of locations north of French River, \$2 to \$3 per acre, and south of it, \$2 to \$1.50, according to distance from railway.

Rent of locations first year 60c. to \$1 per acre, and subsequent years 15c. to 25c. per acre.

Rent of claims, \$1 per acre each year. Claims must be worked continuously.

Royalty on ores specified in the Act, 2 per cent. of value at pit's mouth less cost of labor and explosives.

Royalty not charged until seven years from date of patent or lease, nor (as provided in s. 4 (3) of the Mines' Act, 1892), until fifteen years in the case of an original discovery of ore or mineral.

Original discoverer of ore or mineral on claim entitled to stake out a second claim.

Crown Lands sold under provisions of mining laws in force prior to 4th May, 1891, exempt from royalty.

Copies of the Mines Act, 1892, Amendment Act, 1894, may be had on application to

**ARCHIBALD BLUE,**  
Director Bureau of Mines.

TORONTO, May, 25th, 1894.

### E. S. TOPPING,

Trail and Deer Park Lots.  
Mines for Sale. Choice Stocks Handled. Examinations and Reports on Mines.  
TRAIL, B.C.

### T. R. DEACON, C.E., O.L.S.,

CIVIL AND  
MINING ENGINEER.  
ONTARIO LAND SURVEYOR.  
Mines and Mineral Lands Reported on.  
RAT PORTAGE, ONT.

THE RAT PORTAGE HARDWARE CO.  
(Limited)  
GENERAL HARDWARE  
Prospectors' and Miners' Supplies  
MAIN STREET  
RAT PORTAGE, - ONTARIO.

GOLD HUNTERS  
and Mining Companies

When needing supplies of Fresh or Cured Meats, Potatoes and other Vegetables, Butter, Eggs, Lard, etc., we make a specialty of catering for this class of trade, having stores in Winnipeg and connections at country points, enables us to fill all orders promptly and at lowest market prices. Your trade solicited.

**A. GIBSON & CO.**  
Corner Second and Matheson Streets  
RAT PORTAGE, - ONTARIO.

PROMOTERS'  
STOCK

Mining Syndicate almost complete. A few shares for sale at ground floor price.

**R. S. WRIGHT & CO., 99 Bay St.**

**WILLIAM J. MORAN**  
Barrister, Solicitor, Etc.

Scovil Block, RAT PORTAGE.  
Funds to Invest in Partially Developed Mining Properties.  
MONEY TO LOAN.

**PALMER HOUSE,**

Corner KING and YORK STREETS,  
Rates, - - - \$2.00 per Day.

**KENSINGTON (opposite)**

EUROPEAN PLAN,  
50c. to \$1.00 per Day per Room.  
J. C. PALMER, Proprietor.

In replying to advertisements in this paper, mention The Canadian Miner.