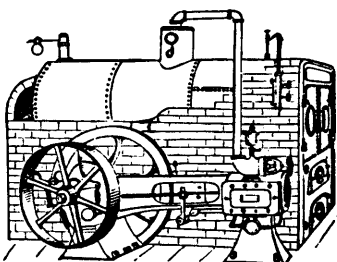


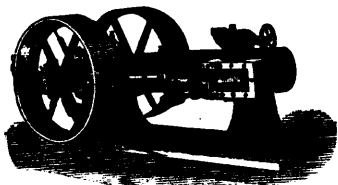
**E. LEONARD & SONS, London, Ontario.****LEONARD**

Ball Automatic and Com-  
pound Engines  
for Electrical Plants and  
Street Railway Service.



**LEONARD**  
TANGYE and LEONARD  
Engines.

Standard Stationary  
Steel Boilers with one  
Sheet on Bottom.



4 to 150 HORSE POWER

HOISTING ENGINES.

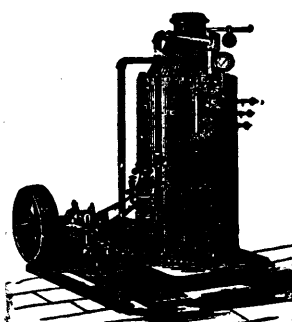
STANDARD HEATERS,

AGENCIES AND STOCKS KEPT  
MONTREAL AND ST. JOHN, N.B.

STEAM PUMPS,

INJECTORS, ETC.

SEND FOR PRINTED MATTER.

**OTTAWA BOILER WORKS.****W. J. CAMPBELL,**

482-484 MARIA, ST., OTTAWA, ONT.,

MANUFACTURER OF EVERY DESCRIPTION OF

**MINING, MARINE AND STATIONARY BOILERS.**

The Fitzgibbons Patent Marine Boiler a Specialty; also Water Heaters, Air Receivers, Waste Burners, Tanks Hoisting Pails, Flues, Smokestacks, and every description of Sheet and Plate Steel or Ironwork made to order.

**SECOND - HAND BOILERS**

and a complete line of Steam Gauges, Water Gauges, Inspirators, Injectors, and other Fittings constantly on hand.  
Inquiries and Orders promptly attended to.

# Our FRICTION GRIP PULLEYS

ARE THE ONLY SPLIT GRIP PULLEYS & CUT OFF  
COUPLINGS MADE. GIVE EVERY SATISFACTION AS  
DRIVERS OR DRIVEN PULLEYS. FULLY GUARANTEED.

**WATEROUS ENGINE WORKS CO.**  
BRANTFORD, CANADA.

ENGINES, SAW MILL AND BRICK MACHINERY OUR SPECIALTY.

As easily applied to

**GEARING**

AND

**Sprocket Wheels**

AS TO

**PULLEYS.**

Works equally as well as a

**DRIVEN OR DRIVER.**

A success all along the  
line. Send for par-  
ticulars of

3-93" X 22" FACE,

Transmitting 200 H.P.

each, and

3-81" X 20" FACE,

Transmitting 230 H.P.

each.

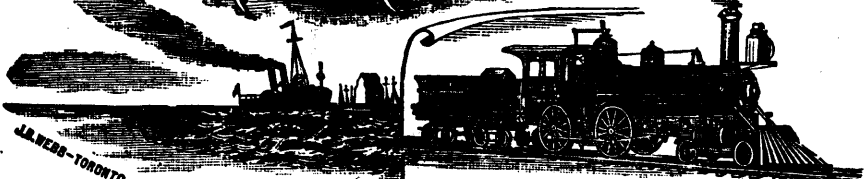
SUBSCRIBED CAPITAL - \$100,000.

FULL GOVERNMENT DEPOSIT.

SIR ALEX. CAMPBELL, K.C.M.G., PRES.  
(Lieut. Govr. of Ontario)

JOHN L. BLAIR, ESQ., VICE PRES.

## THE BOILER INSPECTION and Insurance Company of Canada.



CONSULTING ENGINEERS.

G.C. ROBB, Chief Engineer. A. FRASER, Secy. Treas.

HEAD OFFICE, 2 TORONTO ST.

**TORONTO.**

THE PREVENTION OF ACCIDENT AND ATTAINMENT OF ECONOMY IN THE USE OF STEAM OUR CHIEF AIMS.

Agents at Montreal, J. W. GRIFFIN & MUDGE, 1725 Notre Dame Street.  
Agent at Ottawa, J. K. STEWART, Sparks St. Agent for Nova Scotia, G. W. JONES, Halifax.  
Agent for New Brunswick, R. W. FRANK, St. John.  
O. E. GRANBERG, Inspector, Montreal. W. J. COLLESTON, Inspector, St. John, N.B.

**Money Orders.**

MONEY ORDERS may be obtained at any Money Order Office in Canada, payable in the Dominion and Newfoundland; also in the United States, the United Kingdom, France, Germany, Austria, Hungary, Italy, Belgium, Switzerland, Portugal, Sweden, Norway, Denmark, the Netherlands, India, Japan, the Australian Colonies, and other Countries and British Colonies generally.

On Money Orders payable within Canada, the commission is as follows:

If not exceeding \$4	2c.
Over \$4, not exceeding \$10	5c.
" 10, " "	10c.
" 20, " "	20c.
" 40, " "	30c.
" 60, " "	40c.
" 80, " "	50c.

On Money Orders payable abroad the commission is:

If not exceeding \$10	10c.
Over \$10 not exceeding \$20	20c.
" 20 " "	30c.
" 30 " "	40c.
" 40 " "	50c.

For further information see OFFICIAL POSTAL GUIDE,  
Post Office Department, Ottawa.  
1st November 1889.

**NORTH-WEST MOUNTED POLICE****RECRUITS.**

APPLICANTS must be between the ages of Twenty-two and Forty, active, able-bodied men of thoroughly sound constitution, and must produce certificates of exemplary character and sobriety. They must understand the care and management of horses, and be able to ride well.

The minimum height is five feet eight inches, the minimum chest measurement 35 inches, and the maximum weight 175 pounds.

The term of engagement is five years.

The rates of pay are as follows:—

Staff-Sergeants.....\$1.00 to \$1.50 per day.  
Other Non-Com. Officers .. 85c. to 1.00 do

	Service pay.	Good conduct pay.	Total.	
1st year's service..	50c.	—	50c.	per day.
2nd do ..	50c.	5c.	55c.	do
3rd do ..	50c.	10c.	60c.	do
4th do ..	50c.	15c.	65c.	do
5th do ..	50c.	20c.	70c.	do

Extra pay is allowed to a limited number of Blacksmiths, carpenters and other artisans.

Members of the force are supplied with free rations, a free kit on joining, and periodical issues during the term of service.

Applicants may be engaged at the Immigration office, Winnipeg, Manitoba; or at the Headquarters of the Force, Regina N. W. T.

**CANADA ATLANTIC RAILWAY.**

The shortest passenger route between  
**OTTAWA and MONTREAL**  
and all points east and south.

The only road in Canada running trains lighted with electricity and heated by steam from the engine. Luxurious Buffet Pullman Palace Cars on all trains between Ottawa and Montreal. Only line running through Sleeping Cars between

**Ottawa, Boston and New York**

And all New England and New York points.

Baggage checked to all points and passed by Customs in transit.

For Tickets, Time Tables and information apply to nearest agent or to

S. EBBS, City Passenger Agent,  
24 Sparks St., OTTAWA.

GEO. H. PHILLIPS Gen. Agent,

VALLEYFIELD.

J. W. DAWSEY,

136 St. James St., MONTREAL

Or at 260 Washington St., Boston, and  
317 Broadway, New York.

E. J. CHAMBERLIN,

General Manager,

C. J. SMITH,

General Passenger Agent.

General Offices, Ottawa.