

# Creations Seen at Millinery Openings in Brantford Stores

AT J. M. YOUNG & CO.'S



You must be fair and under forty to wear the eccentricities in hats that are now being put on the millinery counters. The pictures shown are not caricatures, but actual hat fashions drawn from some of the head gear shown. The artist, however, has labeled them as they struck his masculine fancy. Which one, Mr. Man, would you like to see your wife wear?

AT E. B. CROMPTON & CO.'S



Some of us can remember seeing up in the attic a hat which grandmother fondly called a "Dolly Varden." This year the milliners are bringing out one with the lace frills and the pink ribbons and roses that closely resemble it. These hats are built up in the back and are almost flat on the top. They are made of tagal braid and are usually of delicate colors. The one shown is of pale blue tagal braid with white lace and pink and blue morning glories and blue ribbon. It would be beautiful with a white lingerie gown.

AT OGILVIE, LOCHEAD & CO.'S

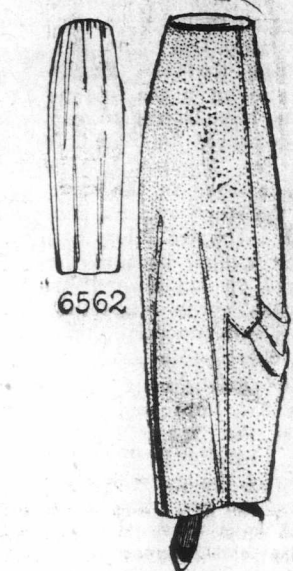


Jet will usually be the choice of the woman who always wears the right thing for the first spring hat. But unless you can afford more than one hat a season do not buy one trimmed with jet, as these hats are to be the most popular of the spring "vintage" and they will become very common. The very charming one pictured has an upstanding brim of the tagal braid faced with gathered taffeta which is used as a background for the upstanding ruffle of embroidered net.

AT THE MITCHELL PARLORS



DAILY FASHION HINT.



**No. 6562, Lady's Skirt.**  
This three gore skirt makes an excellent model for serviceable materials such as serge, cheviot, twilled goods and the like. It may have high or regulation waistline. The back is gathered at the top and the line of the front closing is broken at the knee by a pointed tab holding a few folds of drapery coming from one side. The skirt pattern, No. 6562, is cut in sizes 22 to 32 inches waist measure. Medium size requires 2 1/2 yards of material, 44 or 54 inches wide. This pattern can be obtained by sending 10 cents to the office of this paper.

AT THE ENTERPRISE



AT CLARK-LAMPKIN CO.'S



AT HUNTER & CO.'S



Eight days must be allowed for receipt of pattern.

**PATTERN ORDER**  
Cut this out, fill in with your name and address, number and description. Enclose 10c. and mail to the Pattern Department of the Brantford Courier.

No. .... Size .....

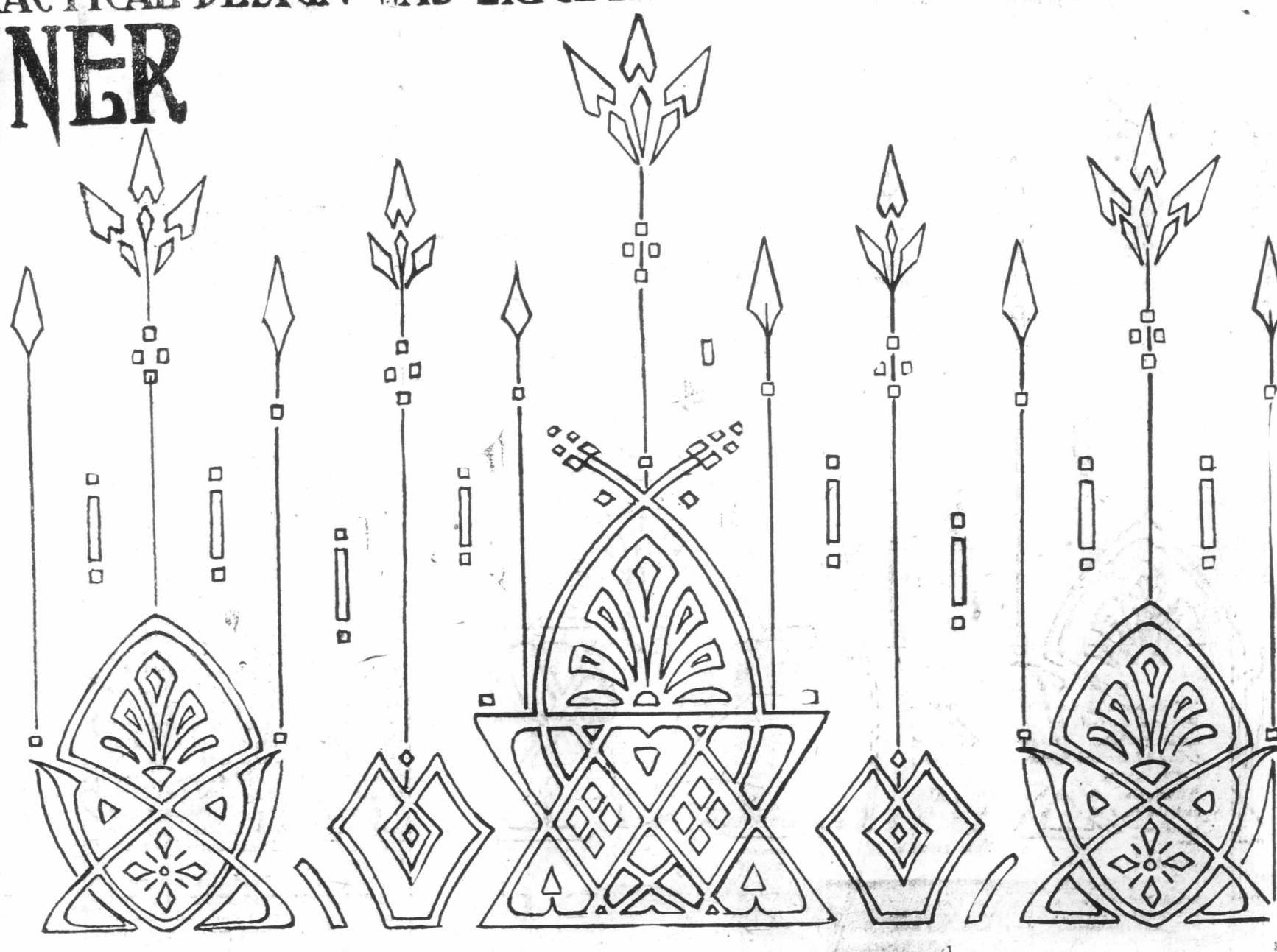
Name .....

Street .....

Town .....

## THE IDEA FOR THIS NOVEL & PRACTICAL DESIGN WAS ORIGINATED BY "WINIFRED WORTH"

# TABLE RUNNER DESIGN



**TO TRANSFER THIS DESIGN.**  
Put some soap in a pint of hot water, stir and remove soap. Saturate Design with mixture, then remove excess moisture by partially drying Design. Place material on a hard flat surface and lay the Design, face down, upon the material. Cover with two folds of newspaper, and with a table-spoon rub, pressing hard, until the Design is entirely transferred.  
**PATENT PENDING.**  
World Color Ptg. Co., St. Louis, Mo.

**"A TRIUMPH"**  
**"SA"**  
PURE, CLEANLY  
BLACK, MIXED  
NATURAL GR  
**Bourassa Sees  
An Acclamation  
In Prescott**

MONTREAL, March 11.—Although Mr. Henri Bourassa is not yet a candidate for nothing for publication, he now says that if an election is held in the city of Prescott, he will consent to be the successor of the late Evanturel as the representative of that constituency in the House of Ontario. No delegation will be sent to Prescott today, and it may be that a meeting will be held before a mutual understanding can be reached at the representative men of the parties might support Mr. Bourassa, although some one might be expected to support him at the last moment for this reason. Bourassa will do nothing short of an election which will induce him to consider the possibility of representing the constituency for two years.

**WEDNESDAY SOCIETY AT THE MOTOR**  
HAMILTON, March 11.—A year of unprecedented growth and accessory trade annual automobile show of Hamilton Motor Dealers associated at the new armories.

**Food Comp**

All that is necessary is to designate a

**GAM**  
ENGLISH  
BURNLEY  
MANCHESTER  
OLDHAM  
PRESTON  
SHEFFIELD

BIRMINGHAM  
BRADFORD  
BRISTOL  
NOTTS CO  
WOOLWICH

GILLINGHAM  
CRYSTAL  
READING  
NORTHAMPTON  
PORTSMOUTH

AYR UNITED  
DUNDEE  
THIRD LANCASHIRE  
MOTHERWELL

NAME OF COMPANY  
NO. .... ST.

No person will win the same number.  
A prize of \$90 will be given to the correct result of the above three months' play.  
A prize of \$10 will be given to the correct forecasts the correct.  
In case of more than one correct forecast the prize will be divided.  
In case no one forecasts the correct result a prize of \$2 will be given to the correct result.



J. S. HAMILTON,