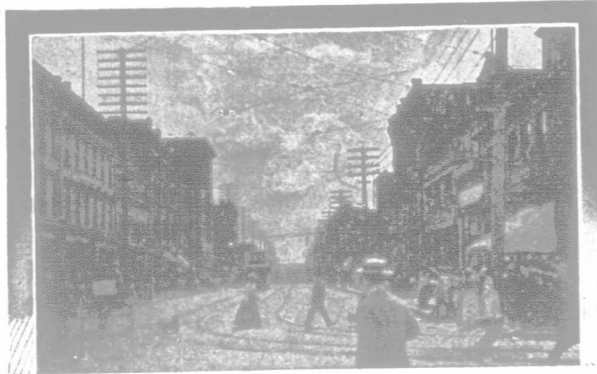


VANCOUVER, B. C.

Is the most attractive residential city in Canada.



Due to its Climate, Scenery, Educational Facilities and Growing Prosperity. We sell

RESIDENTIAL, BUSINESS and SUBURBAN LANDS.

Correspondence solicited.

MAHON, M^cFARLAND & MAHON,
Real Estate Brokers. 541 HASTINGS ST.

Good Paint Good Policy!

Paint and Varnish for every purpose is made by the **Canada Paint Company.** Each tin is guaranteed to be the best procurable.

Buyers are requested to insist that each package bears the name of

: : the : : om

Canada Paint Company, Ltd.

The Choicest Wheat Lands of Eastern Assiniboia

are in the

LAST MOUNTAIN VALLEY

along the surveyed line of the

GRAND TRUNK PACIFIC RAILWAY

\$9.10 per acre - Present Price - per acre \$9.10

The C. P. R. is already there, and, with the steamboat service, the transportation facilities will be perfected.

"At least equal to the Portage Plains"

Read the signed opinion of over two hundred of the new settlers. Send for free maps, books, etc.

WM. PEARSON & CO., Winnipeg

FARMERS!

We have taken over the business of the Independent Grain Co., and for 1c. per bushel we will dispose of your grain in car lots and secure for you the highest market price as well as government weight and inspection. Ship to our order, Fort William or Port Arthur, mail the shipping receipt to us, and by next mail we will advance you up to 75 percent of value, and will pay you the balance promptly when the car is sold and out-turn for it is received.

Office: 365 Main Street.
P. O. Box 442, Winnipeg

References: Bank of Hamilton or Merchants Bank of Canada.

THOS. D. ROBINSON & SON

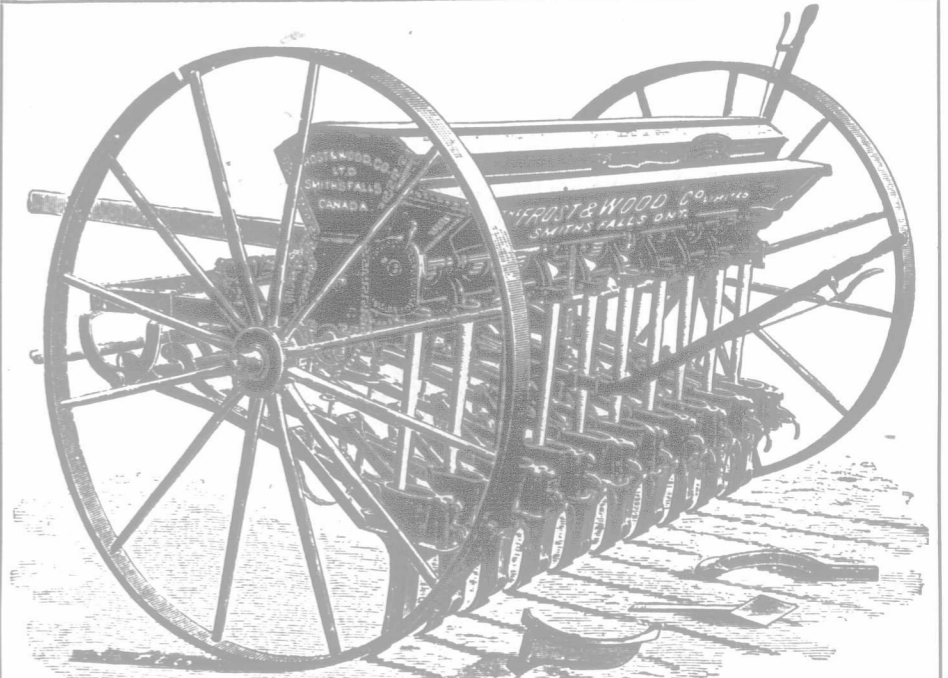
In answering any advertisement on this page, kindly mention the FARMER'S ADVOCATE.

Increase Your 1905 Crop

You can do so by using the right Seeding and Cultivating Machinery.

FROST & WOOD SEEDERS, DRILLS and CULTIVATORS

WILL PROVE "THE RIGHT ONES."



F. & W. Champion Hoe Drill.

Farmers all over the country now recognize the fact that grain drilled yields a far better crop than grain sown broadcast.

The "CHAMPION" Sows the grain in an evenly-regulated flow. Sows accurately and according to index. Sows ALL the grain—none wasted or destroyed.

Get posted by reading our Catalogue "F"—it's free.

We are the oldest PLOW manufacturers in Canada. Experience always counts.

The FROST & WOOD CO., Ltd.,

Head Office and Works, SMITH'S FALLS, ONT.

Branches: Winnipeg, Brandon, Regina, Calgary.

FRANK O. FOWLER, President.
ANGUS McDONALD, Vice-President.
JOS. CORNELL, Secy. and Manager.

Full Deposit with
Manitoba Government.

Licensed to Transact Business in Northwest Territories.

The Central Canada INSURANCE CO.

Authorized Capital, \$500,000.

Fire Insurance. Hull Insurance. Pure-bred Registered Live-stock Insurance

HEAD OFFICE: BRANDON, MANITOBA.

DONALD MORRISON & CO., GRAIN COMMISSION.

416 Grain Exchange, WINNIPEG.

Licensed, Bonded.

Reference, Bank of Hamilton, Exchange Branch.

PENMANSHIP Stenography and Book-keeping. Write for complete course for home study in all three. Insures a beautiful hand. Catalogue free. NATIONAL BUSINESS COLLEGE, LTD. E. J. O'Sullivan, C. E., M. A., Prin., Winnipeg, Can.

Calgary Business College

Open all the year round for thorough commercial instruction. TOUCH-TYPING, STENOGRAPHY, BOOK-KEEPING, etc., etc. For terms apply

W. H. COUPLAND,
Box 205. CALGARY, ALBERTA.

\$1,500.00 AWARD

For the production of a hardy apple and plum. If interested, write for our catalogue of hardy nursery stock. Apple, crab and plum trees, currant, raspberry and gooseberry bushes, strawberry plants, ornamental shrubs and trees, hedging and wind-break trees, etc. Trees that will grow in Manitoba and the Territories. Address: BUCHANAN NURSERIES, St. Charles, Man.

