



WHAT a vivid contrast there is in the appearance of a place which is fronted with a broken-down picket fence and one with a Frost Maple Leaf Ornamental Fence.

The former gives the place an appearance of untidiness and hard times, while the latter adds to it an air of neatness, refinement and prosperity.

And the contrast is not in the looks alone, but in the value of the property as well. A poor, unsightly fence detracts from the value of the property, while a neat, substantial fence increases its value largely.

So when putting up a fence it will pay you to secure the best—the Frost Maple Leaf Ornamental Fence. It's a distinctly ornamental fence at a price within the reach of every land owner. It is constructed after the same careful manner as the famous Frost Wire Fences—is substantial and durable, as well as handsome in appearance. We have an almost endless variety of designs—every particular requirement can be perfectly suited.

And this strong, substantial, attractive Frost Maple Leaf Ornamental Fence is cheaper than wood. It will outlive three or four picket or wooden fences will last a lifetime. Its first cost is insignificant compared with the additional value it gives to the land. In a few years a Frost Maple Leaf Ornamental Fence will pay for itself several times in the increasing dollar value it adds to your property.

Over 1,000,000 feet of Frost Maple Leaf Ornamental Fence is in use in Canada to-day. How many feet are you going to add to its total this year?

With an ornamental fence you want an ornamental gate. Frost Ornamental Gates have a special design in scroll work, and any owner will feel proud of his purchase.

You, of course, want to know more about Frost Ornamental Fences and Gates, and a request will bring a neatly-illustrated Catalogue.

FROST WIRE FENCE COMPANY
LIMITED
Hamilton, Ont.
Winnipeg, Man.

"Frost" Fence



"OSHAWA" Galvanized STEEL SHINGLES

Put them on with no tools but a hammer and tinner's shears,—can't go wrong. They lock on all four sides, are self-draining and water-shedding on any roof with three or more inches pitch to the foot. Make buildings fire-proof, weatherproof and proof against lightning. Cost least in the long run. Made of 28-gauge toughened sheet steel—only one quality used and that the best—cold and double-galvanized. Last longer with no painting than any other metal shingles heavily-

Painted. Guaranteed in every way until 1932. Ought to last a century. Cheap as wood shingles in first cost; far cheaper in the long run. "Oshawa" Galvanized Steel Shingles cost only \$4.50 a square, 10 ft. x 10 ft. Tell us the area of any roof and hear our tempting offer for covering it with the cheapest roof you can really afford to buy. Let us send you FREE booklet about this roofing question—tells some things you may not know.

Oshawa Galvanized Steel Shingles are GUARANTEED in every way for Twenty-Five Years Ought to Last a Century

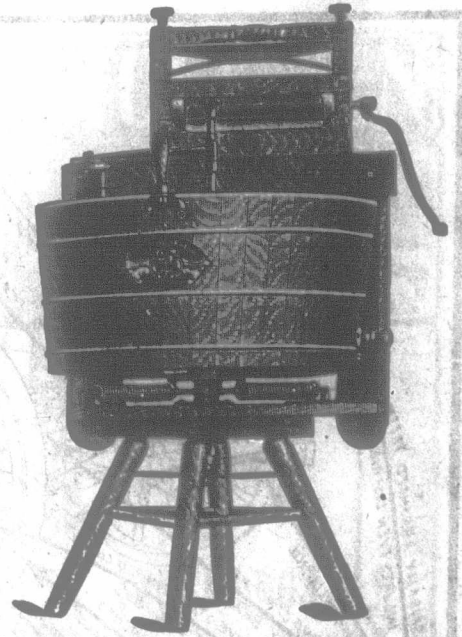
The Pedlar People

Address our Nearest Warehouse: MONTREAL 821-3 Craig St. W. TORONTO 11 Colborne St. OTTAWA 423 Sussex St. LONDON 89 Dundas St. WINNIPEG 76 Lombard St. VANCOUVER 615 Pender St.

Oshawa Canada

Send for FREE Book—"Roofing Right" Get Our Offer Before You Roof a Thing

PLEASE MENTION THE FARMER'S ADVOCATE.



Let this Machine do your Washing Free.

There are Motor Springs beneath the tub. These springs do nearly all the hard work, when once you start them going. And this washing machine works as easy as a bicycle wheel does.

There are slats on the inside bottom of the tub. These slats act as paddles, to swing the water in the same direction you revolve the tub.

You throw the soiled clothes into the tub first. Then you throw enough water over the clothes to float them.

Next you put the heavy wooden cover on top of the clothes to anchor them, and to press them down.

This cover has slats on its lower side to grip the clothes and hold them from turning around when the tub turns.

Now, we are all ready for quick and easy washing. You grasp the upright handle on the side of the tub and, with it, you revolve the tub one-third way round, till it strikes a motor-spring.

This motor-spring throws the tub back till it strikes the other motor-spring, which in turn throws it back on the first motor-spring.

The machine must have a little help from you, at every swing, but the motor-springs, and the ball-bearings, do practically all the hard work.

You can sit in a rocking chair and do all that the washer requires of you. A child can run it easily full of clothes.

When you revolve the tub the clothes don't move. But the water moves like a mill race through the clothes.

The paddles on the tub bottom drive the soapy water THROUGH and through the clothes at every swing of the tub. Back and forth, in and out of every fold, and through every mesh in the cloth, the hot soapy water runs like a torrent. This is how it carries away all the dirt from the clothes, in from six to ten minutes by the clock.

It drives the dirt out through the meshes of the fabrics WITHOUT ANY BUBBLING,—without any WEAR and TEAR from the washboard.

It will wash the finest lace fabric without breaking a thread, or a button, and it will wash a heavy, dirty carpet with equal ease and rapidity. Fifteen to twenty garments, or five large bed-sheets, can be washed at one time with this "1900 Junior" Washer.

A child can do this in six to twelve minutes better than any able washerwoman could do the same clothes in TWICE the time, with three times the wear and tear from the washboard.

This is what we SAY; now, how do we PROVE it? We send any reliable person our "1900 Junior" Washer, free of charge, on a full month's trial, and we even pay the freight out of our own pockets.

No cash deposit is asked, no notes, no contract, no security.

You may use the washer four weeks at our expense. If you find it won't wash as many clothes in FOUR hours as you can wash by hand in EIGHT hours you send it back to the railway station,—that's all.

But if, from a month's actual use, you are convinced it saves HALF the time in washing, does the work better, and does it twice as easily as it could be done by hand, you keep the machine.

Then you mail us 50 cents a week till it is paid for. Remember that 50 cents is part of what the machine saves you every week on your own, or on a washwoman's labor. We intend that the "1900 Junior" Washer shall pay for itself and thus cost you nothing.

You don't risk a cent from a first to last, and you don't buy it until you have had a full month's trial.

Could we afford to pay freight on thousands of these machines every month, if we did not positively KNOW they would do all we claim for them? Can you afford to be without a machine that will do your washing in HALF THE TIME, with half the wear and tear of the washboard, when you can have that machine for a month's free trial, and let it PAY FOR ITSELF? This offer may be withdrawn at any time it overcrowds our factory.

Write us TODAY, while the offer is still open, and while you think of it. The postage stamp is all you risk. Write me personally on this offer, via: F. A. A. Bach, Manager "1900" Washer Co., 855 Yonge St., Toronto, Ont.

Our Pony Mill 2,000 To 6,000 Feet a Day

SAW MILLS

From this size up to largest, standard mills with variable friction feed Favorites in every lumber district. Cut most with least power, easy to handle. Edgers, Trimmers, Lathe Mills, Shingle Mills, Out off and Rip Saws, etc. See our free catalogue.

American Saw Mill Machinery Co.
113 Hope St., Hackettstown, N. J.
624 Engineering Bldg., New York City.