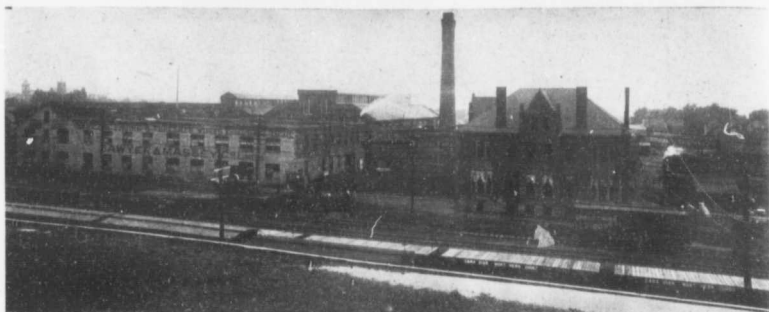


Hamilton Spectator Carnival Souvenir



General View of the Immense Plant of the Sawyer & Massey Company, Limited, Hamilton, Canada

The Sawyer & Massey Company, Limited

WHILE age and long establishment may lead to a business as well as the individual an air of solidity and strength, there is but one sure test for both of these qualities. It is to be found in the ability of the company or individual to meet and cope with the now and ever-changing conditions of a fast developing age. Virility is the quality that counts in this day and, applying this test, it is easily apparent that the Sawyer & Massey Company, Limited, is both solid, strong and vigorous. This business, begun in Hamilton in 1836 by McQuesten & Fisher, engine makers, in a one-room factory and continued from 1866 to 1889 by L. D. Sawyer, H. P. Colburn and Jonathan Ames, with a widening of its manufacturing sphere to threshing machines and other farm implements, is to-day under the Sawyer & Massey Management, the largest and most important threshing and engine works in the Dominion. Mr. Colburn is still with the company as vice-president and general manager, and is a heavily interested stock holder. He has been with the business for over thirty years, and the company's good standing to-day is largely due to his efficient and sagacious management of its affairs.

The Sawyer & Massey Company is one of the many Hamilton concerns that have been rejuvenated during the past ten years. The works of to-day are not the works of a few years ago. There has been a transformation. Conditions in Canada have changed, and the company's strength has been demonstrated in the ease with which the changed conditions have in every case been met. The works of to-day are as modern and complete as engineering skill and plentiful capital can make them. A trip through the works is a revelation. The foundry building and mill room is the most finely equipped in the city. It is 60 x 160 feet, having a cupola with a 12-ton capacity, compressed air crane of seven tons capacity, numerous air hoists and all the newest foundry appliances, which includes a 40-horse power Corliss engine supplying power. This building is heated by the Buffalo Forge System, and here and in the mill room all dust, etc., is drawn off by exhaust fans. Here also is an experimental room for testing machines, and a fire-proof pattern vault. Close by are the draughting and pattern-making departments, also right up to date.

The castings from the mill room are stored in the basement of the machine shop, a building 40 x 152 feet. Here are the engine and erect-

ing departments, the erecting floor being covered with a 10-ton travelling electric crane. These departments are equipped with all up-to-date machinery, and have a specially fitted up tool room. They are heated by the Detroit hot air blower system, and a 40-h. p. high speed automatic cut-off engine of the company's own make supplies the power.

The blacksmith shop is 60 x 120 feet and, besides a modern forge equipment, has an exhaust draught system, carrying off all gases, etc.

The boiler shop is 60 x 192 feet. In it is a thoroughly modern equipment, including compressed air and hydraulic tools, a 350-ton hydraulic flanging plant, pressing out heads from 3/16 to 5/8 inch thick and up to 6 feet in diameter; hydraulic riveters, a 5-ton compressed air travelling crane and hydraulic cranes, and a host of other good things in a machinery way.

The assembling and paint shop is 140 x 40 feet in size, steam heated, and using electric power 75 h. p. In it are the compound duplex air compressors, and

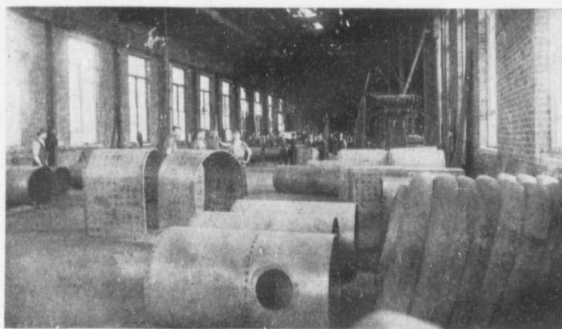
hydraulic pumps. The wood shop is 120 x 90 feet, two stories, power here being supplied by a 60-h. p. Killey engine.

Close by are large testing houses for separators and engines, and water rooms, with a capacity for storing 200 separators and 125 engines. Steam for all building purposes is supplied by two large boilers in a separate boiler house, slavings being carried by the exhaust system from the carpenter shop.

In addition to these buildings, work is now progressing on a new repair, storeroom, show and packing room, 50 x 180 feet, three stories, where all machinery can be seen in motion. This building will have the offices for the company's travellers. Another new building will be a three-story carpenter, machine and paint shop, 80 x 200 feet, operated by electric power and heated with hot air. Still another will be a new molding and engine shop, and a large stock building for raw material and finished parts. All these departments are known by numbers, and are kept in touch with the superintendent's office by a private telephone system.

In addition to these buildings there are storehouses for coke and coal, and a very large lumber yard with a 500,000 feet capacity.

The manufacturing staff totals 325 men, the office staff 25, and the Ontario sales staff 15. The company has a large warehouse in Winnipeg, showrooms in nearly every large town and city and local agents every-



SECTION OF THE BOILER SHOP