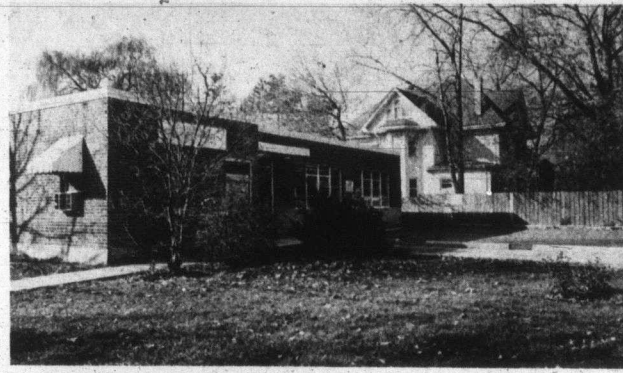
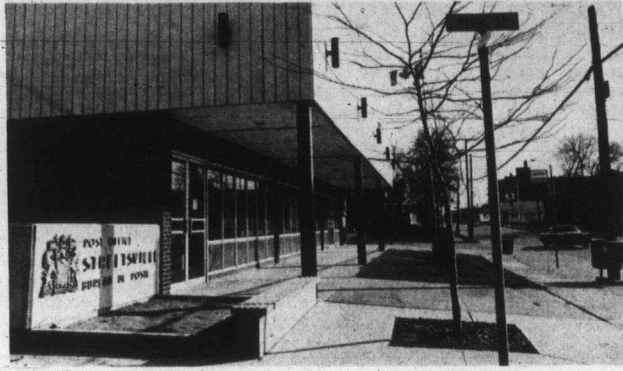


All quiet on the postal front

The assignment: Go out and get some pictures of postal workers on the picket lines in Mississauga. Well, as you can see, we got the pictures of the main city postal stations, but nobody on the picket lines. All very puzzling. One would think there is no postal strike in Mississauga. But that can't be — we haven't gotten any bills lately.



Peel Housing Corp. set up

By SID RODAWAY
Peel is now in the housing business with the creation of the Peel Housing Corp. (PHC), set up Thursday to meet the housing needs of the aged, the physically and mentally handicapped and socially disadvantaged children.

Regional councillors approved a recommendation to incorporate the non-profit housing corporation. The action was taken in face of warnings from northern councillors that a PHC would eventually put the region millions of dollars into debt.

Under the present system of providing housing for senior citizens in need of some care and for handicapped and disadvantaged children, the region must deal through the Ontario Housing Corp. (OHC) to obtain federal funding.

Social services commissioner Jim Crozier explained that the new PHC will allow Peel to deal directly with the federal government to take advantage of the near complete funding programs that are available.

Caledon councillor Richard Whitehead, a member of the social services committee, pointed out that Peel needed its own housing corporation because of new provincial government policies which have dried up the supply of funds for these types of projects.

"Without this corporation, it could be eight to 10 years before Peel gets a third home for the aged," Whitehead said. "We have investigated every avenue of funding and there is no money available through any other way."

The Central Mortgage and Housing Corporation, the prime source of funds for such projects, has a policy of only

dealing with corporations. Whitehead said PHC would be a method of processing the paperwork.

Caledon Mayor Ivor McMillin warned that too many provincial and federal government agencies were scheming to transfer their responsibilities to municipal and regional governments.

He called the incorporation vote a "foot in the door" that will eventually lead to big spending on the part of the corporation.

Crozier countered that the ground work for the third, fourth and fifth Peel-owned senior citizens' homes must be laid now. "We must lay the foundation of the future today."

He said he had been in family court that same morning and seen a young girl sent to a special home in Toronto

for lack of such facilities here in Peel.

Peel pays \$43 a day for the 35 local "disadvantaged" children now lodged in special Toronto group homes. Crozier said the region must pay 7 1/2 percent of the operating deficit of all homes for the aged, handicapped and disadvantaged — the capital and remainder of the operating losses are covered by CMHC.

Mississauga councillor Ron Searle complained that those people operating homes for disadvantaged children in Toronto were making a profit from Peel's children. He pointed to the fact that although Toronto was forced to surrender its own housing authority to the province some years ago, that responsibility has now been given back to Metro, and it's working better.

In the first vote, the recommendation was defeated but was re-opened when it was explained to council how all funds through Ontario Housing Corporation had dried up and incorporation of the region's own housing agency was the only workable alternative left. The final vote was 9-6 in favor of the PHC.

During 1976, Peel will spend about \$1 million on sending individuals to group homes outside the region. Whitehead said that if the local housing authority had been incorporated long ago, the region could have saved at least \$1 million on the Sheridan Villa Home for the aged in Mississauga through faster approvals.

Cheque distribution

Unemployment Insurance Commission cheques can now be obtained by Mississauga residents at the Canadian Legion Hall at 456 Hensall Circle.

Mail service has resumed in Brampton, Bramalea, Georgetown, Acton, Oakville and Milton, so cheques in

those areas will be delivered to the doors. This means the cheque-distribution centre in Brampton, where Mississauga residents were receiving their UIC benefits, is closing.

The service at the Hensall Circle Legion hall will replace the Brampton office for city residents.

ALDER FARMS

278 BROWNS LINE 255-2029

EXTRA SUPER-SPECIAL

LOIN OF BEEF
STEAKS AVERAGE WEIGHT 40 to 60 lbs. CUT INTO T-BONE SIRLOIN & WING STEAKS **99¢ lb.**

SIDE OF BEEF Average Weight 175 lbs. to 275 lbs. **79¢ lb.**

HIND QUARTER OF BEEF Cut & Wrapped at no extra charge (AVERAGE WEIGHT 125 LBS.) **99¢ lb.** Cut & Wrapped at no extra charge

BONELESS ROUND STEAK **ROASTS** **\$1.09 lb.**
CHUCK STEAKS **79¢ lb.**

I CAN'T EAT 'UM
The House of 10,000 PICTURE FRAMES
Brings factory warehouse prices to Mississauga custom picture framing, print gallery, handcrafts, metalwork and canvas stretched, ready-made frames from \$1.50 up
275-9977
open Tues. to Sat. 9-5
2041 Cliff Rd.
next to the Premier Inn (North of Hwy. 10 & Central) 5 minutes from Sherway or Square One

Transportation study nears completion

A study of urban transportation facilities available to physically disabled people in Peel should be completed by the Peel social service department by early December and forwarded to the provincial cabinet.

Peel regional council approved a social services committee recommendation that a copy of the impending report be sent on to the provincial cabinet and to Peel's three municipalities in an effort to improve special-

ized transportation facilities in the region.

Social services commissioner Jim Crozier told council that part of the recommendations will be to ask municipal transit systems to modify buses with hand rails to assist non-wheelchair disabled riders.

But Brampton councillor Terry Miller predicted that no transit system in Peel would ever agree to spend funds now without compensation.

Crozier responded that if

municipal transit systems refuse to co-operate the region might cover part of the cost of modifying buses or a portion of cab fares. He

pointed out that it costs only about \$150 to modify each bus with hand rails and altered steps for non-wheelchair handicapped.

SPECIALISTS TV-STEREO SERVICE
Factory-Trained Fully Experienced Technicians
SIX POINTS TV
233-2141
3845 Bloor St. W.
Sales—Service—Rentals

Royal Trust
Thinking of Selling?
Ask about our Special Financing
SOLD
Royal Trust
REALTOR
THE SIGN THAT SELLS
CALL 236-1871

It's savings time on
Carrier
Central Air-Conditioning

save up to **\$250.** during the month of November.

Fall is the best time to buy Carrier. Install now, and get a rebate cheque for up to \$250. cash. How come? Fall is our slack season and we are looking for business. That's why you can have every room in your home efficiently air-conditioned by us at our lowest possible price. Phone or mail the coupon right away to get complete details on how you can receive a rebate cheque of up to \$250. cash.

Act Now!
Offer expires Nov. 30th, 1975
Shown Model 38SE

PHONE OR MAIL COUPON TODAY

Yes, I am really interested in your \$250. max. cash rebate offer.
Please arrange, without obligation, a free survey and estimate for installing Carrier central air-conditioning in my home.

NAME _____
ADDRESS _____
CITY _____ POSTAL CODE _____
TELEPHONE _____

Single Models: Condensing Units 38CE, 38CF, 38GS, 38SE, 38TKA Electronic Air Cleaners 31AB, 31AD, 31AF, 31AG, 31AH, 31AI, 31AJ, 31AK, 31AL, 31AM, 31AN, 31AO, 31AP, 31AQ, 31AR, 31AS, 31AT, 31AU, 31AV, 31AW, 31AX, 31AY, 31AZ, 31BA, 31BB, 31BC, 31BD, 31BE, 31BF, 31BG, 31BH, 31BI, 31BJ, 31BK, 31BL, 31BM, 31BN, 31BO, 31BP, 31BQ, 31BR, 31BS, 31BT, 31BU, 31BV, 31BW, 31BX, 31BY, 31BZ, 31CA, 31CB, 31CC, 31CD, 31CE, 31CF, 31CG, 31CH, 31CI, 31CJ, 31CK, 31CL, 31CM, 31CN, 31CO, 31CP, 31CQ, 31CR, 31CS, 31CT, 31CU, 31CV, 31CW, 31CX, 31CY, 31CZ, 31DA, 31DB, 31DC, 31DD, 31DE, 31DF, 31DG, 31DH, 31DI, 31DJ, 31DK, 31DL, 31DM, 31DN, 31DO, 31DP, 31DQ, 31DR, 31DS, 31DT, 31DU, 31DV, 31DW, 31DX, 31DY, 31DZ, 31EA, 31EB, 31EC, 31ED, 31EE, 31EF, 31EG, 31EH, 31EI, 31EJ, 31EK, 31EL, 31EM, 31EN, 31EO, 31EP, 31EQ, 31ER, 31ES, 31ET, 31EU, 31EV, 31EW, 31EX, 31EY, 31EZ, 31FA, 31FB, 31FC, 31FD, 31FE, 31FF, 31FG, 31FH, 31FI, 31FJ, 31FK, 31FL, 31FM, 31FN, 31FO, 31FP, 31FQ, 31FR, 31FS, 31FT, 31FU, 31FV, 31FW, 31FX, 31FY, 31FZ, 31GA, 31GB, 31GC, 31GD, 31GE, 31GF, 31GG, 31GH, 31GI, 31GJ, 31GK, 31GL, 31GM, 31GN, 31GO, 31GP, 31GQ, 31GR, 31GS, 31GT, 31GU, 31GV, 31GW, 31GX, 31GY, 31GZ, 31HA, 31HB, 31HC, 31HD, 31HE, 31HF, 31HG, 31HH, 31HI, 31HJ, 31HK, 31HL, 31HM, 31HN, 31HO, 31HP, 31HQ, 31HR, 31HS, 31HT, 31HU, 31HV, 31HW, 31HX, 31HY, 31HZ, 31IA, 31IB, 31IC, 31ID, 31IE, 31IF, 31IG, 31IH, 31II, 31IJ, 31IK, 31IL, 31IM, 31IN, 31IO, 31IP, 31IQ, 31IR, 31IS, 31IT, 31IU, 31IV, 31IW, 31IX, 31IY, 31IZ, 31JA, 31JB, 31JC, 31JD, 31JE, 31JF, 31JG, 31JH, 31JI, 31JJ, 31JK, 31JL, 31JM, 31JN, 31JO, 31JP, 31JQ, 31JR, 31JS, 31JT, 31JU, 31JV, 31JW, 31JX, 31JY, 31JZ, 31KA, 31KB, 31KC, 31KD, 31KE, 31KF, 31KG, 31KH, 31KI, 31KJ, 31KL, 31KM, 31KN, 31KO, 31KP, 31KQ, 31KR, 31KS, 31KT, 31KU, 31KV, 31KW, 31KX, 31KY, 31KZ, 31LA, 31LB, 31LC, 31LD, 31LE, 31LF, 31LG, 31LH, 31LI, 31LJ, 31LK, 31LL, 31LM, 31LN, 31LO, 31LP, 31LQ, 31LR, 31LS, 31LT, 31LU, 31LV, 31LW, 31LX, 31LY, 31LZ, 31MA, 31MB, 31MC, 31MD, 31ME, 31MF, 31MG, 31MH, 31MI, 31MJ, 31MK, 31ML, 31MN, 31MO, 31MP, 31MQ, 31MR, 31MS, 31MT, 31MU, 31MV, 31MW, 31MX, 31MY, 31MZ, 31NA, 31NB, 31NC, 31ND, 31NE, 31NF, 31NG, 31NH, 31NI, 31NJ, 31NK, 31NL, 31NM, 31NN, 31NO, 31NP, 31NQ, 31NR, 31NS, 31NT, 31NU, 31NV, 31NW, 31NX, 31NY, 31NZ, 31OA, 31OB, 31OC, 31OD, 31OE, 31OF, 31OG, 31OH, 31OI, 31OJ, 31OK, 31OL, 31OM, 31ON, 31OO, 31OP, 31OQ, 31OR, 31OS, 31OT, 31OU, 31OV, 31OW, 31OX, 31OY, 31OZ, 31PA, 31PB, 31PC, 31PD, 31PE, 31PF, 31PG, 31PH, 31PI, 31PJ, 31PK, 31PL, 31PM, 31PN, 31PO, 31PP, 31PQ, 31PR, 31PS, 31PT, 31PU, 31PV, 31PW, 31PX, 31PY, 31PZ, 31QA, 31QB, 31QC, 31QD, 31QE, 31QF, 31QG, 31QH, 31QI, 31QJ, 31QK, 31QL, 31QM, 31QN, 31QO, 31QP, 31QQ, 31QR, 31QS, 31QT, 31QU, 31QV, 31QW, 31QX, 31QY, 31QZ, 31RA, 31RB, 31RC, 31RD, 31RE, 31RF, 31RG, 31RH, 31RI, 31RJ, 31RK, 31RL, 31RM, 31RN, 31RO, 31RP, 31RQ, 31RR, 31RS, 31RT, 31RU, 31RV, 31RW, 31RX, 31RY, 31RZ, 31SA, 31SB, 31SC, 31SD, 31SE, 31SF, 31SG, 31SH, 31SI, 31SJ, 31SK, 31SL, 31SM, 31SN, 31SO, 31SP, 31SQ, 31SR, 31SS, 31ST, 31SU, 31SV, 31SW, 31SX, 31SY, 31SZ, 31TA, 31TB, 31TC, 31TD, 31TE, 31TF, 31TG, 31TH, 31TI, 31TJ, 31TK, 31TL, 31TM, 31TN, 31TO, 31TP, 31TQ, 31TR, 31TS, 31TT, 31TU, 31TV, 31TW, 31TX, 31TY, 31TZ, 31UA, 31UB, 31UC, 31UD, 31UE, 31UF, 31UG, 31UH, 31UI, 31UJ, 31UK, 31UL, 31UM, 31UN, 31UO, 31UP, 31UQ, 31UR, 31US, 31UT, 31UU, 31UV, 31UW, 31UX, 31UY, 31UZ, 31VA, 31VB, 31VC, 31VD, 31VE, 31VF, 31VG, 31VH, 31VI, 31VJ, 31VK, 31VL, 31VM, 31VN, 31VO, 31VP, 31VQ, 31VR, 31VS, 31VT, 31VU, 31VV, 31VW, 31VX, 31VY, 31VZ, 31WA, 31WB, 31WC, 31WD, 31WE, 31WF, 31WG, 31WH, 31WI, 31WJ, 31WK, 31WL, 31WM, 31WN, 31WO, 31WP, 31WQ, 31WR, 31WS, 31WT, 31WU, 31WV, 31WW, 31WX, 31WY, 31WZ, 31XA, 31XB, 31XC, 31XD, 31XE, 31XF, 31XG, 31XH, 31XI, 31XJ, 31XK, 31XL, 31XM, 31XN, 31XO, 31XP, 31XQ, 31XR, 31XS, 31XT, 31XU, 31XV, 31XW, 31XZ, 31YA, 31YB, 31YC, 31YD, 31YE, 31YF, 31YG, 31YH, 31YI, 31YJ, 31YK, 31YL, 31YM, 31YN, 31YO, 31YP, 31YQ, 31YR, 31YS, 31YT, 31YU, 31YV, 31YW, 31YZ, 31ZA, 31ZB, 31ZC, 31ZD, 31ZE, 31ZF, 31ZG, 31ZH, 31ZI, 31ZJ, 31ZK, 31ZL, 31ZM, 31ZN, 31ZO, 31ZP, 31ZQ, 31ZR, 31ZS, 31ZT, 31ZU, 31ZV, 31ZW, 31ZX, 31ZY, 31ZZ

Call Us Today For A Free Survey Of Your Home!
653-6212
EASTERBROOK Since 1945
1547 Keele St., Toronto, Ont. M6N 3G1
"The best equipment deserves the best installation"
authorized Carrier dealer

THE MERCHANTS ASSOCIATION OF DIXIE PLAZA INVITE YOU TO JOIN

THIS THURSDAY, FRIDAY AND SATURDAY NOVEMBER 20, 21 & 22

RAINBOW MAN and the... RAINBOW RAMJET

see APEMAN free buttons! balloons!

TAKE A TRIP through RAINBOW MAN's headquarters

See KINGCAR Chrysler's Display OF NEW CARS AT SAYVETTES

dixie plaza