

**W. D. PETTIGREW & CO.**  
 IMPORTERS AND WHOLESALE  
 DEALERS IN

**Shelf Hardware**  
 Mill Supplies, Paints, Oils, Glass,  
 Putty, etc., etc.

TINWARE, GRANITEWARE AND HOUSE  
 FURNISHING GOODS.

—WHOLESALE AGENTS FOR—

**WM. BUCK'S STOVES.**

CORRESPONDENCE SOLICITED.

528 Main Street, WINNIPEG.

this space will be 128 miles. The rails are also down for the greater part of the distance. The principal work remaining is the finishing of two enormously high bridges east of Mooshead lake, one of them five miles from Greenville and the other eleven miles further on. All the work is of the most substantial character. The bridges are of steel and the masonry is of heavy stone. Wooden trestles are employed to the least possible extent. The general equipment of the permanent way is of high character.

Various towns in eastern Maine are expecting great things in the way of commercial development on the completion of the line. St. John and Halifax, likewise, continue their rivalry in laying claim to the prospective advantages of the new western connection. Meanwhile, Portland and Boston, with established lines in operation in connection with the Canadian Pacific, are receiving merchandise regularly in large amounts from the northwest, and are acquiring business relations which ought in the nature of things to continue.—Bradstreet's.

**Sugar Situation.**

The London Grocer of October 27th, in its report, says: "A fact which cannot have been overlooked by the trade is the smallness of the quantity that is said to represent the existing stock of raw sugar in the port of London, it being returned as only 38,400 tons against 55,240 tons last year and 80,030 tons in 1886; but we doubt if the returns are correct, knowing that with many private importers who are their own wharfingers it is quite optional whether they send up returns of their stocks and deliveries or not; and as we know they do not unless it suits them, there are good reasons for believing that our system of stock returns is very faulty and incomplete, consequently we think that, until this is proved to be the contrary, no heed should be given to the statements that the stocks of sugar here are so very much reduced as they appear to be on the face of the notoriously imperfect documents which are handed in for almost anybody's inspection in the Lane every week. That some such view is held by several leading firms in the wholesale grocery trade, not to say Mincing Lane brokers, is pretty clearly evidenced by the greater degree of dulness which has been observable in the raw market all the week through, as even less disposition to buy has been shown than previously, and notwithstanding the extreme scantiness of supplies in cane descriptions, the few sales reported have been practicable only at easy rates."—Empire.

**GREENE & SONS COMPANY**

WHOLESALE

**HATS and CAPS,**

**STRAW GOODS,**

etc., etc.

MEN'S

**FURNISHINGS**

Merino and Woolen Underwear,

**SCARFS, TIES, SHIRTS, COLLARS,**

Waterproof Coats.

**MANITOBA SPRING TRADE, 1889.**

WAREHOUSE:

517 519 521 523 and 525 St. Paul Street

**MONTREAL.**



**TASSE, WOOD & CO**

Manufacturers of

**Fine Cigars,**

MONTREAL.

Our Brands: { Reliance Terrier,  
 Mikado and General  
 Arthur.

Are unsurpassed by any in the Dominion

Ask your Wholesale Merchant  
 FOR THEM.

ENGLISH OAK TANNED  
**LEATHER BELTING**

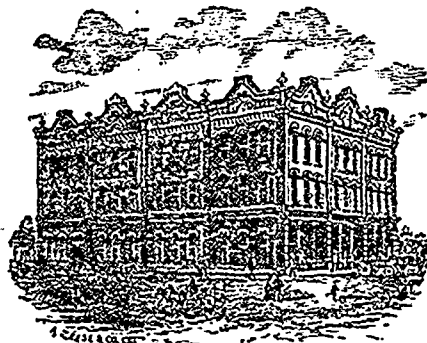
LACE LEATHER, Etc.

Cotton and Woolen Mill Supplies.

**JAMES LESLIE,** JUNCTION OF GRAIG AND  
 ST. ANTOINE STREETS,

P. O. Box 996.

**MONTREAL.**



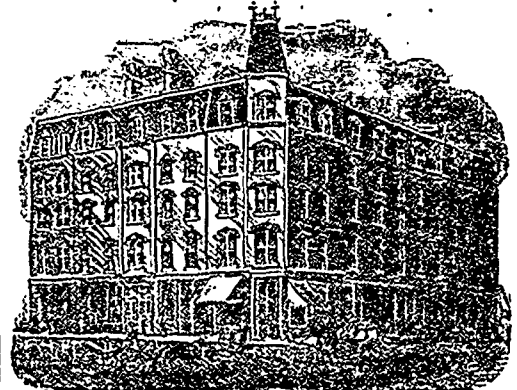
**HOT AIR FURNACES**

Estimates given on application.

**THE E. & C. GURNEY CO.,**

OFFICE: Cor. Alexander and Princess Sts.,

WINNIPEG.



**THE CLARENDON.**

The only FIRST CLASS solid brick hotel in  
 Winnipeg. Elegant Dining Room.

TERMS MODERATE.

**BENNETT & CO., PROPRIETORS,**