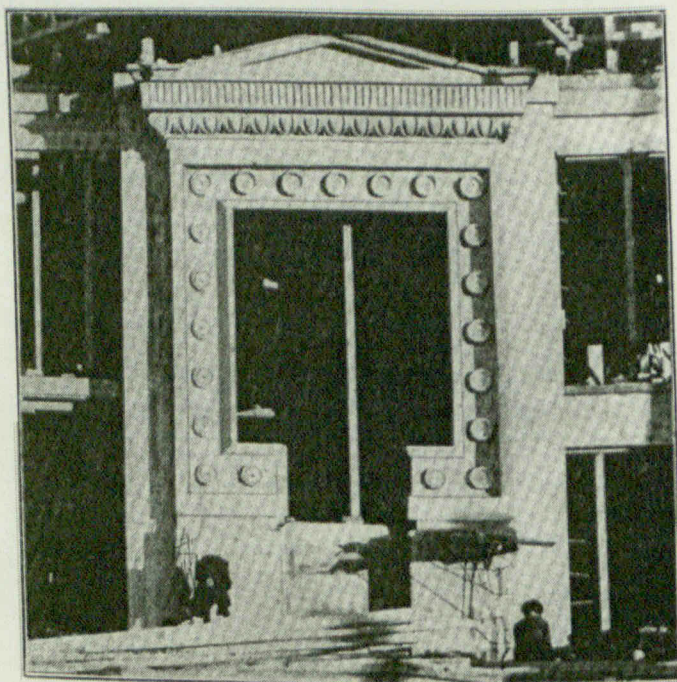


# **DOMINION ENGINEERING & CONSTRUCTION CO. LIMITED GENERAL CONTRACTORS**



The above picture shows the main entrance to one of the new reinforced concrete factories now building on the cost-plus-a-fixed-sum contract for the American Tobacco Co. in Montreal.

The artistic detail embodied in this work gives evidence of the adaptability of reinforced concrete to architectural effects.

This feature can be secured, however, only by the most careful construction supplemented by specialized experience in this class of work.

The architect employing our services is assured of the most satisfactory treatment of his design, while at the same time, the owner under the cost-plus-a-fixed-sum contract, can count with equal security on the stability of his building.

## **DIRECTORS:**

RANDOLPH MACDONALD, CONTRACTOR

ROBERT A. ROSS, MECHANICAL ENGINEER

HENRY HOLCATE, CIVIL ENGINEER

FRANK B. GILBRETH, CONTRACTOR

JOHN A. AYLMEYER, CONTRACTOR

**SOVEREIGN BANK BUILDING**

**- MONTREAL**