

7. "Henry I. had been born in England, and wished to reign as an English King." Name four acts of Henry to bring this about.

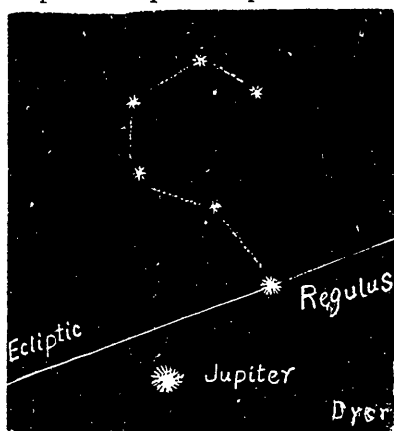
This paper was taken by 104 Juniors. Below are the names, in order of merit, of the first 22—about half girls and half boys.

{ Dickinson, V
 { Woods, M
 Mews, A
 Tucker, J
 { Atwill, F
 { Holloway, E
 { Foote, M
 { Jardine, E

{ Jones, A
 { Miller, A
 { Knight, W
 { Lorway, E
 Macpherson, E
 Kendall, G
 Boone, E

{ Percy, W
 Green, H
 Squires, B
 Story, H
 Gaze, H
 { Ayre, H
 { Chaplin, L

Viewed from the College steps at 7.30 p.m. on March 3, Jupiter occupied the position shewn in the following diagram:



Look carefully above the blazing planet Jupiter, and you will soon pick out the six stars which form the "Sickle." There is no mistaking them. They are known to astronomers as "*The Sickle in Leo*." All the stars in the neighbourhood belong to the constellation of Leo (the Lion). The brightest of the six, the one in the tip of the handle, is *Regulus*. The straight line passing

through *Regulus* is the *Ecliptic*—the line which marks the path of the Sun in his annual journey. Have a good look at this part of the sky on the first clear night, and you will be able to identify this combination (the Sickle in Leo) as long as you live.

As the days go on, the position of Jupiter will gradually change; but the change will be slow, and the Diagram will still fairly well represent the relative positions of planet and stars.