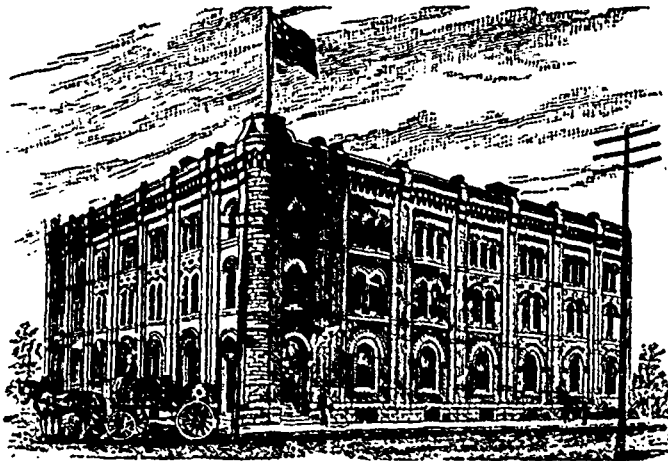


GOODS SOLD TO THE  
TRADE ONLY.GOODS SOLD TO THE  
TRADE ONLY.

## G. F. & J. GALT,

**DIRECT IMPORTERS**  
TEAS, SUGARS, WINES, LIQUORS and GENERAL GROCERIES  
CORNER PRINCESS AND BANNATYNE STREETS, WINNIPEG, MANITOBA.

### A Fine New Warehouse.

The addition of substantial wholesale warehouses to the business blocks of Winnipeg, tell more forcibly than anything else of the solidity of the wholesale trade of the city. Every season of late years something has been done in this direction, and THE COMMERCIAL has from time to time been able to report the completion and occupation of new warehouses. The most recent addition to this class of buildings in the city is the fine new warehouse erected this season by the W. E. Sanford Manufacturing Company, wholesale clothing. This well known house has been doing business here for years, under the management of Mr. R. F. Riley, and the decision to erect a new warehouse is evidence that business has not been unsatisfactory with the house here in the past.

The warehouse, now about completed, is located on the corner of Princess and Bannatyne streets. It is a massive brick and stone building, containing four floors including the basement, and the full ground size is sixty-six feet on Princess and ninety feet on Bannatyne street. The building is divided into two sections by a solid brick wall from the basement upward. The corner section is now occupied by the W. E. Sanford Company, though there are still some finishing touches to be added, and the smell of varnish is yet present. Each division of the building has a frontage of thirty-three feet on Princess, by ninety deep.

Entering the corner door on the ground floor the general business office of the W. E. Sanford Company are first reached, and adjoining this is the private office of the manager and the vault. In the rear of the offices is a fine large sample room, size 32 by 25 feet. This is the particular pride of the manager, and it will certainly make a splendid room for this purpose. It is well lighted from windows all along Princess street, and from the hall-way around the room. The light admitted by tinted glass gives a pleasant appearance to the room. The sample room and offices are neatly furnished throughout. In the rear of the sample room is the shipping room, goods being handled through the door opening on the lane at the back of the building.

The basement is fitted up in keeping with the rest of the building to carry stock, and being half above ground is quite well enough lighted for this purpose. The basement contains a new feature in the shape of a bath room, wherein a customer coming in from the country can freshen himself up before proceeding to business.

The first flat above the ground floor is in one apartment, and will be used for stock. The second flat will be used for the same purpose. The corner division of the building is remarkably well lighted, having windows in the back and front and along the side. It is fitted with an elevator, steam heating, electric lighting, etc., and altogether will make a splendid warehouse.

The other half of the building is the same as the portion just described, with the exception that it has not the advantage of windows along the side. Cornell, Spera & Co., wholesale furnishings, etc., will occupy this half of the building within a few days. The cost of the property will amount to \$30,000.

### Grain and Milling.

A lively business is being done in grain at Souris, Man.

E. O'Reilly elevator at Neepawa, which will soon be completed, will have a capacity of 25,000 bushels.

Upwards of 20,000 bushels of wheat were marketed at Brandon on Friday, Nov. 7th, the average price paid for it was 70c.

The new flour mill at Victoria, B.C., started running on Wednesday last. Fraser river wheat was the first to be used in the mill.

Morris is turning out about as good an average quality of wheat this year as any point in Manitoba, and a great deal better than most places.

By the end of October last year Manitoba wheat was being ground into flour in England. This year not a bushel of it had crossed the ocean by that time.

W. A. Russell, who owns a grain elevator at Morris, Man., has made an arrangement with the Lake of the Woods Milling Company whereby he will buy grain for this company at Morris this season, shipping through his own elevator.

## WHOLESALE JEWELER.

Manufacturer and Importer of

## Watches, Diamonds,

Jewelry, Clocks, Etc.

## Tools, Material,

Etc., Etc.

Prices guaranteed as low as any House in Canada. Write for quotations. Call and see us when in the City.

433 and 435 MAIN STREET.

## W. F. DOLL.

Grain men say the deliveries at country points are daily becoming larger. On Thursday, Nov. 6th, 125,000 bushels was marketed throughout the province.

The Manitoba Elevator Company is a new organization which began operations in Manitoba this year. The company has three elevators, one at Brandon, one at Wawanesa and one at Balder, all on the line of the Northern Pacific, Morris-Brandon branch. A fourth elevator will be built at Hilton, on the same railway, for which the lumber was forwarded a week ago. Thos. Nicol who is manager of the large farm near Wawanesa, Man., known as the Toronto Company's farm, is manager of the company. It is the purpose of the company to do an elevator business, and not a grain-buying business, though the company will buy grain until other buyers come forward to buy through its elevators.

The Neepawa, Man. Register gives the following report on the new flour mill lately completed at that place: The Register man found time yesterday to pay a visit to the Beautiful Plains Milling Co.'s new mill. It has now been running over a week and is doing first-class work. So far they have been kept busy grinding. The building is substantial and well finished, and the machinery is the best and latest improved. The ten set of rolls, the four purifiers, and the reels are all of the Geo. T. Smith make. The machinery throughout runs so smoothly that there is very little noise, an indication that Mr. Pye, of Minneapolis, the contractor, did his work well. In the stove engine house is found a fine looking Brown-Corliss engine of 65 horse-power. The building is to be heated by steam, but the fittings are not in yet. In two or three weeks, when everything is completed, they expect to average 125 barrels per day; at present they are running at the rate of about 100 barrels. F. B. Howard, late of the Shoal Lake mill, and formerly of Minneapolis, is the head miller, and he seems to be courteous and obliging. He has D. Ennis as assistant. R. C. Ennis is manager of both the mill and elevator. The mill is strictly first class in every respect, and is a credit to the Beautiful Plains Milling Company. The building is sufficiently large to enable the placing of machinery capable of making the output from 150 to 175 barrels per day.