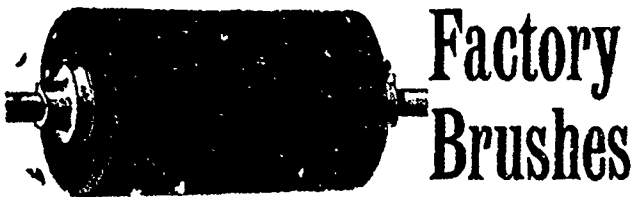


# GEO. D. ROSS & CO.

WOOLEN COMMISSION MERCHANTS  
MONTREAL and TORONTO

Tweeds    Stoffes    Shirts and Pants  
Worstedes    Blankets    Fulled Socks and Mitts  
Serges    Yarns    Gloves, Hosiery, etc., etc.

*Advances Made on Consignments.*  
*Correspondence Solicited.*



## Factory Brushes

AND ALL KINDS OF  
**MACHINE BRUSHES** made, and Blocks re-filled.  
Highest quality and best work-  
manship guaranteed, and close-  
est possible prices.  
CHAS. BOEKH & SONS, Manufacturers, TORONTO

## DYEWOOD EXTRACTS

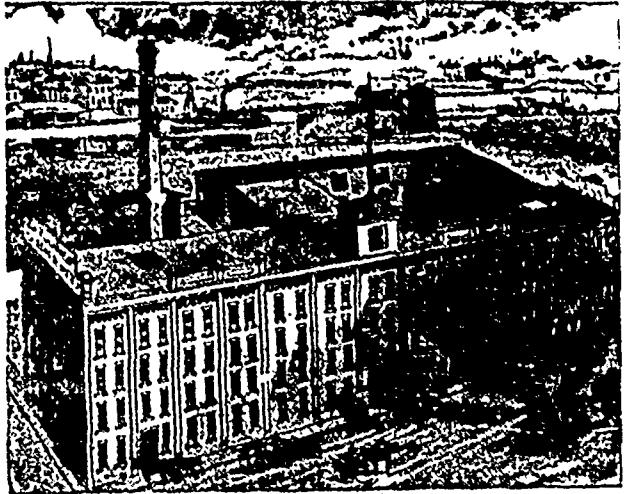
Manufactured by  
MUCKLOW & CO., - BURY, ENGLAND

DOMINION DYEWOOD & CHEMICAL CO.  
TORONTO

SOLE AGENTS FOR CANADA

A. R. CLARKE    F. O. CLARKE    C. E. CLARKE

# A. R. CLARKE & CO.



Manufacturers of **GLOVES and MITTS**  
Office: 28 Front St. East    TORONTO  
Works: 199 to 209 Eastern Ave.  
Branches at Montreal, Quebec, Halifax, Winnipeg and Victoria

## PURE SOAP

FOR  
Woolen Mills, Knitting Mills, Carpet Factories,  
Shirt Factories, Laundries.

WANZER SOAP CO., HAMILTON



Samples and Price List on Appli-  
cation. We have no Travellers, and  
Sell to the Wholesale Trade only.

## The Beaver Rubber Clothing Co.

THE PIONEERS IN THIS TRADE IN CANADA.  
8 St. Lawrence Street,    MONTREAL.  
E. L. ROSENTHAL, Manager.

## Felts for Pulp Mills

Felts will last longer and make dryer Pulp.  
All up-to-date mills use our Felts. New mills, when  
in need, write for samples and prices.

Twenty years in the business—the first to make  
Felts in Canada; capacity 1,000 lbs. per day. All  
our Felts are woven endless, without a splice. Our

**HAMELIN & AYERS, Lachute Mills, P.Q.**

## WILSON & COMPANY

DEALERS  
IN ALL KINDS OF

# WOOL

CORNER FRONT AND CHURCH STREETS,  
TORONTO, ONT.

Established 1848.

## A. EICKHOFF

Manufacturer and Dealer in  
Hatters', Furriers', Tailors',  
Glovers' and Shirt Cutters'  
**KNIVES AND SCISSORS.**

Knives for all kinds of business always on hand and  
warranted. All kinds of Cutlery ground  
and repaired.

No. 381 BROOME STREET,  
Between Broadway and Bowery.

**NEW YORK CITY**