

**McARTHUR,  
 CORNEILLE & CO.**  
 310 to 316 ST. PAUL ST.  
 MONTREAL

**OILS, CHEMICALS, DYESTUFFS  
 AND  
 TANNING EXTRACTS**

*Waxes, Gums, Shellacs,  
 Glues, Gelatines, Etc.*

CANADIAN AGENTS  
 FOR THE  
 BERLIN ANILINE CO.  
 BRITISH ALIZARINE CO. and  
 MILLER'S TANNING EXTRACT CO.

**THE BOILER INSPECTION  
 and INSURANCE CO. of CANADA**

CONTINENTAL LIFE BUILDING  
 TORONTO

Thirty Years' Experience as Consulting Engineers

Toronto, November 15th, 1904.  
**THE BOILER INSPECTION & INSURANCE CO.  
 OF CANADA,**

Toronto, Ont.

Gentlemen:—

Your inspection of the boilers at our 21 fac-  
 tories has been thorough and painstaking and  
 has resulted in our Engineers and Firemen exer-  
 cising greater care than heretofore.

Had we had an accident of any kind the  
 damage of course would have been paid by you.  
 But the principal benefit to us has been your able  
 professional assistance in solving the various  
 engineering difficulties, which from time to time  
 have presented themselves.

Yours very truly,

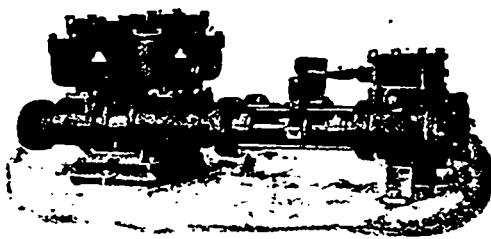
**CANADA FURNITURE MANUFAC-  
 TURERS LIMITED.**  
 Wm. Schrage, General Factory Manager.

**Malleable  
 Iron  
 Castings**

**QUALITY AND SERVICE  
 GUARANTEED**

**McKinnon Dash &  
 Metal Works Co.,  
 LIMITED**

ST. CATHARINES - ONT.

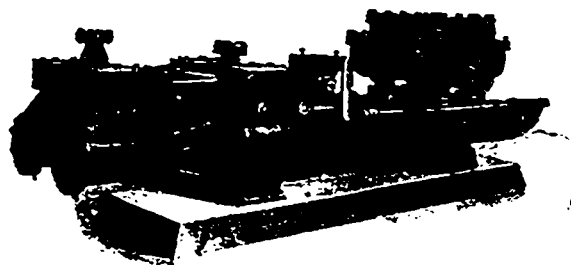


**The Smart-Turner Machine Co.**

Limited

HAMILTON, ONTARIO

The Best is the Cheapest, therefore buy  
**Smart-Turner  
 Pumps and Travelling Cranes**



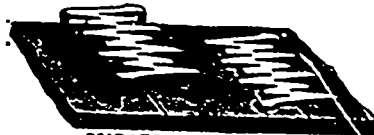
For The Best Castings.

**“CARRON”  
 PIG IRON**

All Strengths for any  
 Purpose

**A. G. LESLIE & CO., LIMITED**  
 MONTREAL

TRADE MARK  
**BRISTOL'S**  
 REG. U.S. PAT. OFFICE.  
 PATENT STAGGERED POINT  
**STEEL BELT LAGING**  
 FOR ALL KINDS OF BELTS



READY TO APPLY FINISHED JOINT  
 THE PERFECT BELT FASTENER  
 MADE IN ALL SIZES  
 FOR GENERAL USE ON  
 LEATHER, RUBBER AND COTTON, AND  
 WOVEN BELTS

SAVES BELTS, TIME AND MONEY  
 Send for Free Samples and Catalog  
**THE BRISTOL CO.**  
 WATERBURY, CONN.

**Smith's Falls Malleable  
 Castings Company, Limited**

**CAPACITY 8,000 TONS**

MANUFACTURERS

OF

**MALLEABLE  
 IRON  
 CASTINGS**

Smith's Falls, Ont., Can.