

Seasonable Paragraphs for the Gardener

DON'T stop cultivation in the flower or vegetable garden now. Keep the soil loose and the weeds out.

That the garden may look its best, pick the flowers constantly; pansies, sweet peas, poppies, and roses especially. The best time to pick flowers is in the morning and evening when the sun is not bright and the plants are fresh.

Trim the hedge, but do not give a severe pruning.

It is time to make up lists of tulips and other bulbs that are to be planted in quantity this fall. Send to some of the large importers of bulbs for their catalogues. Tulips, crocus, and daffodils do well outside.

Blight, a fungus disease, is liable to cause trouble this month. For the large garden, spraying with bordeaux is the best remedy. The most common formula is four pounds of lime, four pounds of copper sulphate, and forty gallons of water. Dissolve the bluestone in a fairly large quantity of water, slake the lime separately, mix the two solutions, and dilute to required quantity.

For the small garden the most convenient remedy for fungus diseases is to powder the leaves with flowers of sulphur or a mixture of flowers of sulphur and lime.

Would you enjoy the novelty of a few strawberries during the winter? Put some plants in pots, plunge the pots out of doors, and bring them into the house in the fall.

The old blackberry and raspberry canes should be cut as soon as fruiting is over. At the same time the young growth should be pruned back to a convenient height, say three and one half to four feet. Next year's crop will be increased by judicious pruning.

August is the insect month. Dusting the plants with lime is the safest treatment for cabbage worm; poisons are too dangerous. Arsenate of lead is becoming popular as a poison spray; it sticks to the foliage well.

Cultivation of bush plants should soon cease. If you have a fair-sized patch, it is good practice to sow a cover crop; ryegrass is suitable. Another plan is to give a mulching of manure.

Strawberries may be planted now if the soil is in good condition and moist. For raising very choice berries, one method is to set the plants one foot apart each way and trim off all runners. Every four rows a row may be skipped to leave a path.

Red raspberries are propagated by suckers which come up around the old plants. These may be taken up in the autumn, heeled in during the winter,

and set out in a permanent bed the next spring.

Have you ever considered the advantages and pleasure that even a simple, cheap greenhouse offers? Read carefully the articles in this special greenhouse number.

If you have a hotbed, cucumbers can be sown now and they will fruit in early winter.

The late sown crops should be given every opportunity to grow. Thin properly and cultivate.

If you intend taking a crop of strawberries from the old bed next year, cut off the runners and trim the plants a bit.

Give the garden every opportunity to do its best by applying nitrate of soda or hen manure.

Bring carnations indoors to pots, boxes or benches in the greenhouse.

Rubber plants can be increased now by binding some moss about the stems and keeping them moist. When the roots form cut the stems below the moss and pot the new plants.

Autumn blooming crocuses, if planted now, will bloom this fall.

Bulbs of Madonna lily, a beautiful, hardy, white lily, should be planted. They will make a small growth this fall, but no injury from frost will result.

Black raspberries and dewberries are propagated by layering. The tips of the canes are bent over to the ground and covered with dirt to a depth of about four inches as soon as the fruiting season is past.

Celery is a moisture-loving plant. See that it gets plenty of moisture.

If you have not a cold frame or a hotbed, now is a good time to build one. Vegetables planted in the cold frame now can be enjoyed in the late fall. Next spring the cold frame can be utilized as a hotbed.

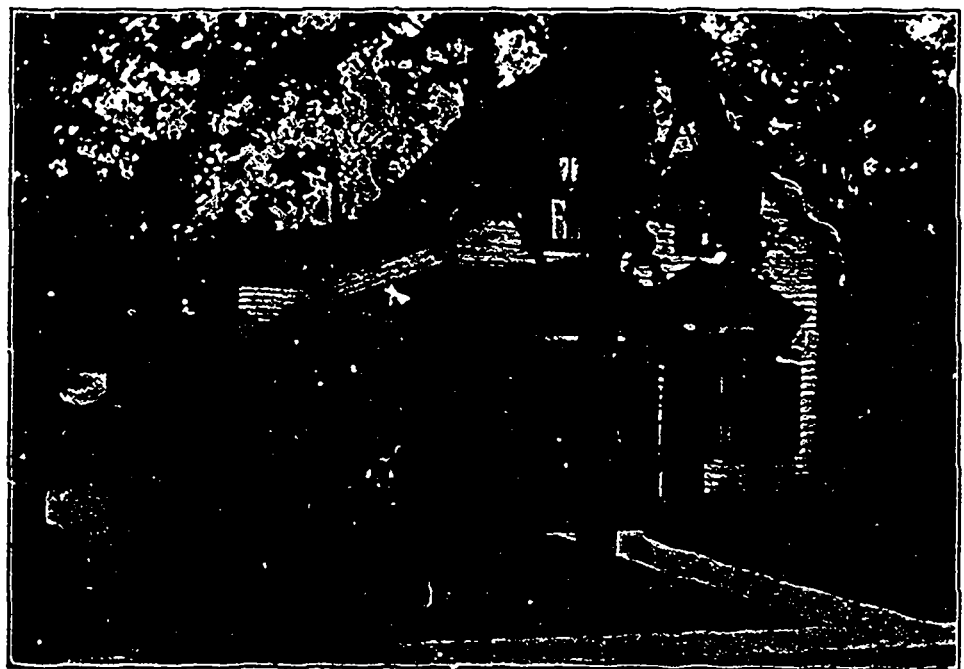
Geraniums for winter flowering should now be potted. Plunge the pots in the garden where they may remain till early in September. Keep all bloom buds picked off in the meantime. When plunging the pots out doors, place a flat stone underneath them so earth worms cannot get into them.

Seed of pansies should be sown early in flats for planting out in cold frames in September to winter over in the greenhouse or conservatory. These will flower early in spring.

If you have not yet done so, now is a good time to plan the flower arrangements for next season.

To rejuvenate old geraniums that are in pots, cut back where the stems are getting woody. Keep the soil about them moist. When there are signs of growth, remove from the pots, cut the roots back by half, and put in smaller pots. When five or six leaves have developed, repot in large pots.

It pays to put vegetables and fruits in clean, neat and attractive packages that are to go on to the market. Two small well-graded and well-packed packages often bring double what the same amount will bring in a large package. It does not cost much more to pack in the smaller package.



The Home of Dr. Geo. Bennett, President St. Thomas Horticultural Society
This residence secured third prize for floral beautification in a contest conducted last year by the Society.