

CANADIAN MINING JOURNAL

VOL. XLI.

GARDEN CITY PRESS, Ste. Anne de Bellevue, FEBRUARY 13, 1920.

No. 6

Form No. 303-5M-7-19



CANADA CEMENT COMPANY LIMITED

Montreal, Nov 10th, 1919. 191

CONCRETE FOR PERMANENCE

To The Hull Iron & Steel Foundries Ltd.
Hull, Que.

NOTICE

Send Invoice in Duplicate, put Order Number on Invoices, give number of plant to which Goods are shipped. Do not supply material without an order from the Purchasing Agent.

Order No 94845 / 3

Req. No. 60

PLEASE FURNISH US WITH THE FOLLOWING MATERIAL:

QUANTITY	DESCRIPTION	PRICE
	Outer Side Plates for Ball Mills. (same quality as previously supplied)	
26 -	Heavy Grinding Plates for #8 Krupp Ball Mills.	

Ship to
CANADA CEMENT COMPANY LIMITED, PLANT No. 3, Hull, Que.
Terms: Montreal Funds Net 15th of month following Receipt of Material or
Dates of Shipment At Once.
Routing Carter F.O.B. Point Hull.

CANADA CEMENT COMPANY LIMITED

M. A. Holy
Purchasing Agent

"Same as previously supplied."

WHAT COULD BE MORE CONVINCING?

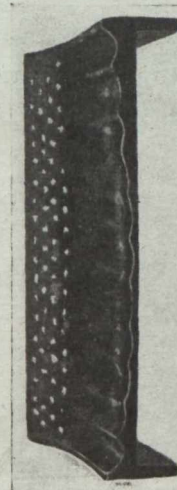
WRITE US FOR INFORMATION

HULL IRON & STEEL FOUNDRIES, LIMITED

HULL,

CANADA

THE PLATE
with a record



**H
I
S
C
O**

Photographed after running 1000 hours longer than Krupp or any other make. No distortion; not a crack. This service brings repeat orders from all the largest users in Canada.