



Canadians

are loyal to the colors loyal to their citizenship loyal to business enterprises of the Province; every patriotic appeal finds a ready response in a Canadian's heart.

We are Canadian manufacturers; we have been doing business in Canada for many years, making Canada's fence, and we are grateful for the patronage accorded us during these years from our Canadian friends.

Now is the time to stand by Canada's interests. We are doing our part to maintain a business regularly, and are manufacturing such a good line of fencing that it is worthy of special mention in connection with Canada's future relations to the Nations of the world. Read this interesting letter, observe the illustration, and then ask yourself this question: "Is not a fence made of material good enough for such an important purpose the kind that should be used by every Canadian?"

Kingston, Ont., 1914.

Burwell-Herde Wire Fence Co., Ltd., Hamilton, Ontario

Gentlemen—I thought you would be interested in the use we are putting your wire in. The Engineers, Queens University, have practical work in the field. This year, under the supervision from the Engineers of the Military Department, they undertook to build a bridge.



The stretch is 110 ft. and the bridge is 20 feet wide. They used 240 rods. They laid the post 5 widths apart by 40s, and 3 layers, making in all 25 lengths of 8 wires each or 200 wires in all. They laid them up together at every two or three feet, and then putting the sections on as you see, and then stretching a wire along the top in the ordinary way as you see. They are now at camp time, when the Burns come into camp, and the artillery across it and get some gun cotton, under it, and blow it up. They estimate is capable of carrying a load of 60,000 lbs., or a body of soldiers at close marching order. You can use these photos to show your wire to us, or if you want I could send you the negative. Yours truly, (Signed) W. A. Mitchell.

Why Peerless Fence Gives Such Good Service

We build it twice as good and strong as is necessary under ordinary circumstances. We build it of heavy Open Mesh steel wire with an extra heavy bottom rail and all the strength and toughness left in. Heavily galvanized. Every intersection is locked tight with a Peerless clamp. All wires used in making Peerless Fence and every fitting are extra heavy—extra strong. Consequently fewer posts are required. Peerless fencing on "top-rail" or "rail-and-rail" is put out of shape—can't help giving trouble and trouble. Can't give details on request. Describes our fence, poultry and agricultural fencing. Also Peerless Farm gates. Agents wanted in all unoccupied territory.

The Burwell-Herde Wire Fence Co., Ltd., Hamilton, Ontario

Windsor, Man. Hamilton, Ontario



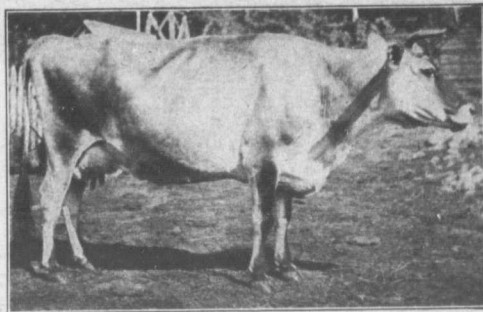
BISSELL Double Action Harrows will thoroughly cultivate and pulverize any soil.

One Harrow is Out Throw; the other is In Throw. They are simply constructed, rigid and durable. The Gangs are flexible and the Disk Plates are so designed that they "hang" right into the soil. Bissell Harrows are built in sizes and weights suitable for horse or tractor use. Write Dept. R for free catalogue.

T. E. BISSELL CO., LTD., Elora, Ont.

See also advertisement on page 11.

A FAVOR Please mention FARM AND DAIRY when writing to our advertisers.



One of the Working Members of a Good British Columbia Herd. Lily's Forget-Me-Not, owned by Grimmer Bros., Pender Island, B.C., has an R. O. P. record of 9,000 lbs. of milk and 557 lbs. of fat. She is sired by Maiden's Brigadier, Menie's noted bull.

A Jersey "Whoop"

EDITOR, Farm and Dairy.—In the office of our district representative the other day I chanced to pick up the latest issue of the Agricultural Gazette and came across an article by Charlie Wood, our one-time popular cow tester and now head of the Record of Performance work. The article in question gives the names and methods of the leading cows in each class for each breed. Being a Jersey fancier, who has often suffered in silence at the hands of patronizing Holstein fans who could quote records by the yard, I welcomed this opportunity to just see how the figures actually stood. The results of my search were so gratifying that I must pass them on.

In the mature class I found the best cow to be Totilla of Riversdale with 846 lbs. of fat to her credit. Certainly a great record. The leading Jersey, however, had Totilla beaten by 80 lbs. as Sunbeam of Edgeley has to her record 926 lbs. of fat, which I understand is the greatest record of any cow of any breed in the British Empire. I gave whoop No. 1 for the Jersey.

Then I gave to the four-year-old records. Hillcrest Pontiac Vale was credited with 789 lbs. of fat, but Beauty Maid, the best Jersey, had a margin on her of 83 lbs. as she had produced 872 lbs. of fat. Here was whoop No. 2 for the Jersey.

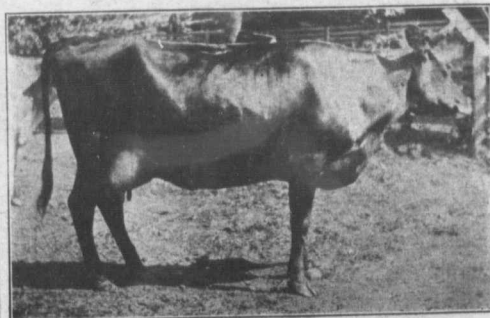
In the three-year-old and two-year-old classes Holstein heifers took the lead, but as long as we Jersey men

can hold first place in the older and, therefore, more important classes, we feel justified in claiming that the Record of Performance honors lie with us.

I have made no comparisons of the milk yields from the two breeds. We don't claim that the Jerseys are big milk yielders, but with the evidence of the R.O.P. before us, Holstein fanciers have no right to claim the cream title as well as the milk pennant. We freely give the black and whites precedence as milk producers under present conditions. When milk comes to be paid for on the quality basis, however, we may dispute with them even there.—"Jersey," York Co., Ont.

How About an Ice Pond

ICES, now considered more of a necessity than a luxury to the economic production of dairy and other farm products, may frequently be had at moderate expense by the average farmer. A low place on the farm, sometimes unfit for cultivation, if but 40 feet square, may be used to excellent advantage as a pond for ice. It is not necessary to excavate more than two feet deep. When dug, the pond may be puddled by herding a drove of cattle, sheep, or hogs in it. When properly puddled, there need be little fear that the water will seep away. It is estimated by the agricultural engineering department of the Nebraska College of Agriculture that a pond 45 feet in diameter will supply twice as much ice as the average farmer will require.



Another Member of the Same Herd, Brampton's Mariposa.

Her R. O. P. record is 9520 lbs. of milk and 558 lbs. of fat as a three-year-old. When an editor of Farm and Dairy visited the Grimmer herd there were 13 pure breeds and four grades with 15 milking. This cow in particular has been a consistent performer.