

## Had to Give up and go to Bed.

Several Doctors Attended  
But Did No Good.

## Milburn's Heart and Nerve Pills CURED.

Read what Miss L. L. Hanson, Water-  
side, N.B., says: "I feel it my duty to  
express the benefit I have received from  
Milburn's Heart and Nerve Pills. A year  
ago last spring I began to have heart  
failure. At first I would have to stop  
working and lie down for a while. Then  
I got so bad I had to give up altogether  
and go to bed. I had several doctors  
attend me but they did me no good. I  
could get no relief until urged by a friend  
to try Milburn's Heart and Nerve Pills.  
Before I had used three quarters of a box  
I began to feel the benefit and by the time  
I had taken three boxes I was completely  
cured."

Milburn's Heart and Nerve Pills cure  
nervousness, sleeplessness, palpitation of  
the heart, skip beats, and all troubles  
arising from the heart or nerves.

Price 50 cts. box, or 3 for \$1.25, all  
dealers, or

THE T. MILBURN CO., Limited,  
TORONTO, ONT.

### Cook's Cotton Root Compound.

Ladies' Favorite.  
Is the only safe, reliable  
regulator on which women  
can depend "in the hour  
and time of need."  
Prepared in two degrees of  
strength. No. 1 and No. 2.  
No. 1.—For ordinary cases  
is by far the best dollar  
medicine known.  
No. 2.—For special cases—10 degrees  
stronger—three dollars per box.  
Ladies—ask your druggist for Cook's  
Cotton Root Compound. Fake no other  
as all pills, mixtures and imitations are  
dangerous. No. 1 and No. 2 are sold and  
recommended by all druggists in the Do-  
minion of Canada. Mailed to any address  
on receipt of price and four-cent postage  
stamp.  
—Cook Company,  
Windsor, Ont.

No. 1 and 2 are sold in Chatham  
by C. H. Gunn & Co., Central Drug  
Store.

## BAKING

Give your wife a chance  
and she'll bake bread like  
that other used to make.

For rolls and biscuits—  
that require to be baked  
quickly there's nothing like  
Gas.

THE CHATHAM GAS CO  
Limited.  
King St. Phone 81

## WALL PAPER

## COOPER'S BOOKSTORE.

116 King St.,  
Chatham...

A large stock of elegant  
patterns and great variety.  
My stock is complete. You  
need not send off to Toronto  
or elsewhere when you can do  
better here.

ROBT. COOPER,  
KING-STREET

\*\*\*\*\*  
E. R. SMITH & SONS  
FIRE, LIFE & ACCIDENT INSURANCE  
Money to loan on Mortgages—Company  
and private funds at borrowers own  
terms—No commission charged—City  
and farm property for sale or exchange  
OFFICE—Opp. market, next to Bank's  
photograph gallery.  
Telephone 167 CHATHAM, ONT.  
\*\*\*\*\*

## NEW Tin Smith and Plumbing SHOP.

The undersigned has opened out a Tin-  
smithing and Plumbing Shop on 4th  
Street, nearly opposite the Catholic  
Church, where he is prepared to do all  
kinds of tin-smithing and plumbing. Fur-  
nace work on the shortest notice. Pat-  
rons cheerfully given.

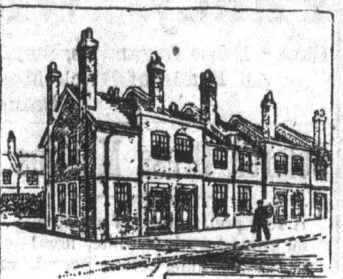
CHAS. CORSELTZ, Fourth St

## WORKMEN'S HOUSES

THE LONDON COUNTY COUNCIL'S  
SCHEME AT TOOTING.

Now Practically Carried Out—Estimated  
Cost Was £495,000—The Cottages Are  
of Four Different Kinds—What the  
Scheme Provides in the Matter of  
Streets—Description of Each Class of  
Cottage.

In a few weeks the first section of  
the new workmen's cottages at Tooting  
will be opened, and it is worth  
while recording, says Lloyd's Weekly  
Newspaper, the details of a housing  
experiment that will be watched with  
interest by local authorities through-  
out the country. Four years ago the  
committee of the London County  
Council engaged in viewing sites in  
South London had their attention  
directed to the Tootingdown fields es-  
tate, which is situated near the tram-  
way terminus at Tooting, lying be-  
tween High street and the road lead-  
ing from Tooting Bec common to  
Mitcham road, known as Church  
lane. The estate of over 88 acres  
included a house known as Kinrara,  
and there was some difficulty in ac-  
quiring it, an agent of the owner



THE TOOTING COTTAGES.

being prosecuted under the Public  
Bodies Corrupt Practices Act. The  
purchase was eventually completed  
under the Housing of the Working  
Classes Act, 1890, for £21,150, per  
acre, and the task of clearing the  
ground and erecting workmen's  
dwellings was put in hand as soon  
as the law's delays would permit.  
One of the initial difficulties was to  
frame a scheme that would comply  
with all the Council's requirements  
as to working-class dwellings, and  
the same time not put too many  
cottages on the estate. Finally a  
scheme was fixed on, and it has now  
been practically carried out. The cost  
was estimated at £495,000.

The scheme provides for three lat-  
eral and three main streets, the lat-  
ter lined with plane trees planted  
just inside the forecourts of the  
cottages, the arrangements of the  
roads enabling the whole estate to be  
divided into 1,244 plots for the  
erection of cottages of four different  
kinds. These vary in area, frontage,  
and depth, according as they are  
first, second, third, or fourth class,  
and are to be arranged in terraces of  
about 18 cottages to each terrace,  
with a space of some 15 feet be-  
tween. It was specially ordered that  
none of the cottages should have  
back additions, a provision designed  
to promote the free circulation of  
air. The table of accommodation is  
the principal feature in the scheme.  
First-class cottages have five rooms  
and scullery, and 29 of them provide  
for 290 people. Of the second class,  
100 with four rooms and kitchen  
house 800 persons, and 109, with  
three rooms and kitchen, house 651.  
There are 818 third-class cottages on  
the list, with three rooms and scul-  
lery, accommodating altogether 4,798.  
The fourth-class tenements,  
which have three rooms and kitchen  
on the upper flat, and two rooms  
and kitchen on the lower, number  
188 and provide for 1,128 tenants  
above and below. These figures  
show a total of 8,532 people in 1,244  
cottages. As to the rooms, the  
average size varies from 120 to 158  
square feet in the living room, and  
from 60 to 79 in the kitchen, while  
the smallest bedroom is 96 square  
feet. They are all comfortable-looking  
two-story buildings, with gar-  
dens in the rear, and the rents run  
from 6s. to 12s. 6d. a week.

### Leftest Lighthouse in the World.

The new lighthouse just completed  
on the Isle Vierge, off the coast of  
Brittany, has the distinction of be-  
ing the most lofty yet erected. The  
new lighthouse stands in close prox-  
imity to an older one dating from  
1845, which it is intended to re-  
place. L'Île Vierge is a rocky islet,  
situated a little to the east of the  
River Abernethy, which enters the  
sea on the north side of the head-  
land of which lies Lshant Isle. The  
old light, which combined a fixed  
white light with a revolving red  
light, was deemed of insufficient  
power, both from its inadequate op-  
tical equipment and from its insuf-  
ficient elevation. It was therefore,  
says Engineering, decided to re-  
place it by a new light of the first  
order, with a focal plane 75.18 me-  
tres (246.65 feet) above ground level,  
or 4.18 metres (13.71 feet) high-  
er than that of the Barbeur-Gatte-  
ville light, and 15.18 metres (49.8  
feet) higher than the famous light  
at Genoa, which, however, dates  
from the sixteenth century. The ma-  
sonry for the new structure was be-  
gun at the end of July, 1897, and  
was finished in a total time of  
about four years and eight months.  
The lantern in the meantime had  
been finished by Messrs. Barbier, and  
formed a prominent exhibit at the  
Paris Exposition of 1900. The  
foundation of the new work is on a  
granite reef, covered in parts by a  
sandy bed varying from 2.50 to  
3.50 metres (8.2 feet to 11.5 feet)  
in depth. A peculiarity of the ma-  
sonry lies in the fact that it is con-  
structed of small stones instead of  
the massive blocks usual in work ex-  
ecuted by the Trinity Corporation.

Advice.  
Johnson—He said I was an addi-  
cated jackass. What do you advise  
me to do about it?  
Jackson—See a good veterinary.



Does it not seem more effective to  
breathe in a remedy, to cure disease of  
the breathing organs, than to take the  
remedy into the stomach?

**Vapo-Cresolene.**  
Established 1899.

Cures While You Sleep  
It cures because the remedy is strongly  
antiseptic is carried over the diseased sur-  
face with every breath, giving prolonged  
and constant treatment. It is invalu-  
able to mothers with small children.  
Is a boon to asthmatics.

Whooping Cough, Bronchitis,  
Croup, Croup, Croup, Hay Fever,  
Catarrh, Croup, Croup, Hay Fever,  
The Vapo-Cresolene, which should last  
a lifetime, is sold in bottles of Cresolene,  
50 cts. Extra, 100 cts. Extra, 200 cts. Extra.  
Vapo-Cresolene is sold in bottles of Cresolene,  
50 cts. Extra, 100 cts. Extra, 200 cts. Extra.  
Vapo-Cresolene is sold in bottles of Cresolene,  
50 cts. Extra, 100 cts. Extra, 200 cts. Extra.  
Vapo-Cresolene is sold in bottles of Cresolene,  
50 cts. Extra, 100 cts. Extra, 200 cts. Extra.

## THE STAGE

"All the world's a stage  
and all the men and  
women merely players."

### ANNOUNCEMENTS.

At the Chatham Grand:—  
Rev. Charles McLean, "Schlatter,"  
May 12.  
Washburn's "Uncle Tom's Cabin,"  
May 18.

(Supplied to The Planet by Press  
Agents.)

Neither retail nor receive scandal  
willingly. In the case of scandal, as  
well as of robbery, the receiver is al-  
ways as bad as the thief.

A good trade or a good education,  
once acquired by an ambitious man,  
are things most valuable and which  
no robber can steal from him.

## Two Agonizing Spring Dis- eases Quickly Cured By Paine's Celery Compound

The Marvellous Power of The  
Compound Astonishes All  
Who Use It.

In removing such diseases as rheu-  
matism and neuralgia from the sys-  
tem in spring time, Paine's Celery  
Compound begins its good work by  
purifying the blood, regulating the  
nervous system and creating a nat-  
ural appetite, and thus suffering  
neuralgia are common results of slug-  
gish and poisoned blood, and un-  
healthy action of the kidneys and  
liver. Pathologists agree that the  
morbidity principle in the blood is uric  
acid, which acts upon the joints and  
muscles, causing pain and suffering.  
Neuralgia is inflammation or other  
morbid condition of some portion of  
the nervous system. Neither disease  
remains long in the system when the  
sufferer uses Paine's Celery Com-  
pound. If the reader of this is suf-  
fering the torments of either disease,  
let him simply try one bottle of  
Paine's Celery Compound and care-  
fully note the results. Mr. J. Y.  
Hemming, London, Ont., says:  
"I suffered for years with inflam-  
matory rheumatism, which baffled  
the skill of medical men. I had every  
form of treatment known to spe-  
cialists, and visited mineral springs,  
but obtained only temporary relief.  
Almost given up in despair, I was  
asked to try Paine's Celery Com-  
pound, and I thank God such a bless-  
ing was brought to my notice. The  
use of three bottles of the great re-  
medy gave me relief from pain and I  
slept better. Ten bottles worked for  
me a complete cure. I have no hesi-  
tation in recommending Paine's Celery  
Compound to all rheumatic sufferers;  
it cures surely and permanently."  
Mrs. P. M. Mather, Vancouver, B.  
C., a cured woman, says:  
"Neuralgia in the head and face  
made life a misery for me for five  
years. The doctors said I would never  
get rid of it. I had heard so much  
about Paine's Celery Compound that  
I determined to give it a trial.  
After the use of four bottles I am a  
cured woman and have not been  
troubled with the disease for five  
months. I owe my present good  
health, comfort and happiness to  
Paine's Celery Compound, and advise  
all neuralgic victims to use it. It  
is the best medicine in the world."  
If you are in need of free medical  
advice, write to Consulting Physician's  
Department, The Wells & Richar-  
dson Co., Limited, Montreal, Que. All  
correspondence is sacredly confi-  
dential.

## NEARED SOUTH POLE

SUCCESS OF THE BRITISH EXPLOR-  
ING EXPEDITION.

How Captain Scott Has Added to Know-  
ledge of the Antarctic Continent—  
South Pole Land Was Once Part of  
Australia—Map of Antarctic Continent,  
According to Latest Discoveries.

Scientific and geographical circles  
are deeply interested in the infor-  
mation brought from the Antarctic by  
the relief steamer Morning, which  
recently arrived at New Zealand after  
a successful search for the British  
Antarctic exploring expedition,  
which sailed from Australia in the  
fall of 1901 in the ship Discovery,  
under command of Captain R. F.  
Scott of the British navy.

The relief party found the Discov-  
ery on Jan. 23 in MacMurdo Bay,  
Victoria Land. The expedition win-  
tered 400 miles farther south than  
any vessel had previously done, and  
Captain Scott, with Dr. Wilson and  
Lieutenant Shackleton, penetrated



CAPTAIN R. F. SCOTT.  
100 miles still farther south, reach-  
ing latitude 82.17, which establishes  
a record, being four degrees higher  
than has heretofore been accomplish-  
ed.

Not only was this record estab-  
lished, but information of much value  
to geographers and scientists was  
obtained. From the fact that Cap-  
tain Scott in the high southern lati-  
tude that he attained saw the range  
of mountains which begins in Vic-  
toria Land still trending south it is  
evident that the most important dis-  
covery in Antarctic geography has  
been made.

Scientists judge from the topo-  
graphy of the land which the Cap-  
tain Scott expedition visited that  
this range of mountains and high  
plateau probably extends over or  
near the south pole and then almost  
due north to what is known as  
Graham Land. The mountains and  
the plateau connected with them dis-  
charge enormous glaciers into the  
Pacific, which makes up the great ice  
barrier noted by all explorers and  
which prevents vessels either touch-  
ing or seeing the mainland from the  
Mount Erebus and Terror region all  
the way to Graham Land.

If this line of Antarctica is approx-  
imately correct, it is probable that  
from the other side of Graham Land,  
south of the Atlantic, the Antarctic  
continent curves inward and then  
strikes over toward the northeast un-  
til it joins Enderby Land and Kemp  
Land, and finally Wilkes Land, which  
in turn connects with Victoria Land.  
The Discovery expedition has de-  
termined that the great ice barrier  
in the south is a gigantic glacier,  
and behind it a high mountainous  
country that probably extends to the  
pole.

The fact is that there is quite like-  
ly a great south continent, with  
high mountains running through it,  
covered with masses of ice. It is  
probable, as has been held by Ant-  
arctic explorers, that this land is a  
continuation of Australia and New  
Zealand, from which it has been sepa-  
rated in the distant past, because  
there is a similarity between the  
animal and plant life there and in  
the islands at the south of the east-  
ern continent. Evidently it was once  
all one land.

Captain R. F. Scott, who com-  
mands the expedition and who will  
remain another year in the Antarctic  
regions to continue the work which



MAP OF THE ANTARCTIC CONTINENT.  
has already been so fruitful of re-  
sults, is but little over thirty and  
looks still younger. He is about 5  
feet 6 inches height, with blue eyes  
and brown hair.

The ship Discovery was built at  
Dundee expressly for the expedition  
and is of exceptional strength. The  
expedition has been very lucky, hav-  
ing lost but one man. The Morning  
brought back some of the Discovery  
party, but Captain Scott still has  
forty-one men with him. The expedi-  
tion will return next year.

To Fight Russia.  
It has just been discovered that  
there exists at Rapperswil, Switzer-  
land, a fund consisting of nearly  
\$50,000 which has been subscribed  
for the purpose of waging war on  
Russia when a propitious time shall  
arrive.

# VARICOCELE

I guarantee my Latest Method Treatment to be a permanent and positive cure for  
varicose veins and hemorrhoids, without cutting, stretching or loss of time. In Varicocele the  
blood is stagnated, the veins are enlarged, the blood is impure, the veins are inflamed,  
also all drains, thereby giving the organs their proper nutrition, vitalizes the parts and  
restores lost power. In Stricture it absorbs the stricture tissue, stops smarting sensation,  
nervousness, weakness, backache, etc., while in all prostatic troubles it is the treat-  
ment par excellence. So positive am I that my treatment will cure you, you can

**PAY WHEN CURED**  
You need pay nothing until you are convinced that a thorough and complete cure has  
been established. This should convince you that I have confidence in my Latest Method  
Treatment, otherwise I could not make you this proposition. It makes no difference who  
has failed to cure you, call or write me.

**Each Time You Call You See Me Personally,**  
Or each time you write I receive your personal attention. The number of years I am  
established in Detroit, and the cures I accomplished after given up by other doctors, has  
placed me as the foremost specialist of the country. CONSULTATION FREE. Call or  
write for blank for home treatment. Perfect system of home treatment for  
those who cannot call. BOOK FREE. All medicines for Canadian patients shipped  
from Windsor, Can. All duty and express charges prepaid. Nothing sent C. O. D.  
**DR. GOLDBERG,** 205 WOODWARD AVE., COR. WILCOX ST.  
DETROIT, MICH.

WHEN YOU WANT  
SPECIAL VALUE IN

**REFRIGERATORS,  
Ice Cream Freezers, Lawn Mowers,  
Lawn Hose, Garden Rakes,  
Garden Sprayers, Screen  
Doors and Windows,**

—GO TO—

## A. H. Patterson's

as these goods have been bought at a low price and will be  
sold for the balance of the season at

**Specially Reduced Prices.**

Don't pay the high price you have been paying, but go to  
A. H. PATTERSON'S, as he can save you money, and his  
goods are the best that Cash can buy.

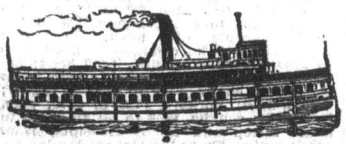
## A. H. PATTERSON

Sole Agent for New American Cultivators, Frost and Wood Machinery,  
Magnet Cream Separators, and everything kept in the Machinery Line.

# Pure Seed for Sale

—AT THE—  
**Canada Flour Mills Co., Limited.**  
GOLDENVINE PEAS, JAPANESE BUCKWHEAT,  
MAMMOTH CLOVER,  
RED CLOVER, TIMOTHY.

**The Canada Flour Mills Co., Limited**  
CHATHAM, ONTARIO.



## City of Chatham

will commence her regular trips on Mon-  
day, May 12th, and will make a round  
trip from CHATHAM to DETROIT  
every

**Monday, Wednesday and Saturday,**  
Leaving Crow's dock, North Chatham,  
at 7.30 a.m., and returning leaves De-  
troit (foot of Randolph St.) at 3.30 p.m.  
Detroit time, or 4.00 clock Chatham time.

**ONE WAY TRIPS**  
Leaves Chatham for Detroit on Thurs-  
day morning at 9.30 o'clock, and leaves  
Detroit for Chatham on Friday morn-  
ing at 8.30 Detroit city time or 9 o'clock  
Chatham time.

**FARES.**  
ROUND TRIP, 60c  
SINGLE TRIP, 30c  
Children under 12 years, half-fare.  
Tickets good for day of issue only.  
Agents—Stringer & Co., Chatham, Od-  
ette & Wherry, Windsor; John Stevenson,  
Detroit.

**JOHN ROURKE, Captain.**  
**WM. CORNISH, Purser.**

## STANDARD BANK OF CANADA

**HEAD OFFICE, TORONTO.**  
Branches and agents at all prin-  
cipal points in Canada, U. S. and Great  
Britain. Drafts issued and notes dis-  
counted. Savings Bank Department  
deposits (which may be withdrawn  
without delay) received and interest  
allowed thereon at the highest cur-  
rent rates.

**G. P. SCHOLFIELD,**  
Manager Chatham Branch.

## BANK OF MONTREAL

**ESTABLISHED 1817.**  
Capital (all paid up) \$12,000,000  
Reserve Fund \$8,000,000  
Deposits, bought and sold. Collec-  
tions made on favorable terms. In-  
terest allowed on deposits at current  
rates in Savings Bank department, or  
on deposit receipts.

**DOUGLAS GLASS,**  
Manager Chatham Branch.

Minard's Liniment Cures Dandruff.

## Money to Loan on Mortgages at 4 1/2 and 5 per Cent.

FOR SALE—FARM AND CITY PRO-  
PERTY.

Brick house, two stories, 7 rooms,  
lot 40 feet front by 208 feet deep,  
\$1100.00.  
Frame house, 8 rooms and summer  
kitchen, lot 60 ft. by 208 ft., good  
stable, \$1100.00.  
House and lot, 9 rooms, \$1050.00.  
House and lot, 6 rooms, \$600.00.  
Farm in Township of Raleigh, 50  
acres. All cleared. Good house and  
barn, \$3100.00.  
Farm in Township of Harwich, 200  
acres. Large house, barn and out-  
buildings, \$12,000.00.  
Farm in Township of Raleigh, 40  
acres. Good house, new stable and  
granary, \$2350.00.  
Ten acres in suburbs of Chatham,  
\$1500.00.  
Valuable suburban residence, 11  
rooms; with seven acres of land. Good  
stable, \$3000.00.  
Apply to  
**W. F. SMITH,**  
Barrister.

## A. O. U. W.

Charity, Hope and Protection are  
the three cardinal principles of our  
Order. By a combination in the char-  
acter of each member of these three  
attributes we have men of noble  
men working together for a common  
good. These features should commend  
the A. O. U. W. to every man desiring  
safe insurance. Our meetings are  
well attended and full of interest.  
Absent brothers miss a treat. Come  
out and bring that application!  
Visiting Brothers Welcome!  
**A. B. SAUERMAN, J. R. SNELL,**  
Recorder

## Commercial Printing.

When in need of anything in the  
line of Commercial Stationery,  
Visiting Cards, etc., leave your  
order at the

## Planet Job Department.