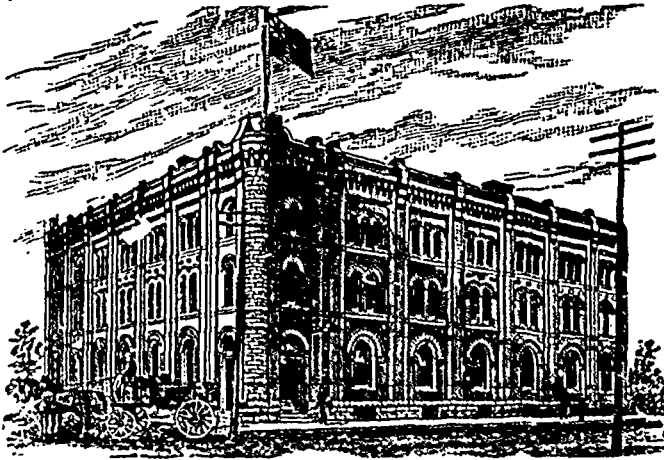


GOODS SOLD TO THE  
TRADE ONLY.GOODS SOLD TO THE  
TRADE ONLY.

## G. F. & J. GALT,

**DIRECT IMPORTERS**  
TEAS, SUGARS, WINES, LIQUORS and GENERAL GROCERIES  
CORNER PRINCESS AND BANNATYNE STREETS, WINNIPEG, MANITOBA.

JOHN PARSONS.

W. J. PARSONS.

R. A. ROGERS.

## THE PARSONS PRODUCE CO.,

R. A. ROGERS, Manager.

—WHOLESALE PACKERS AND JOBBERS OF—

### Fancy Dairy and Creamery Butter, Eggs, Apples, AND DRESSED POULTRY.

### GENERAL COMMISSION MERCHANTS.

175 Main Street, Cauchon Block,

Telephone 620.

Winnipeg, Man.

REFERENCES: Imperial Bank of Canada, Winnipeg, Man. and Parkhill Banking Co., Parkhill, Ont.

#### Miscellaneous Prices at Montreal.

**Flour.**—In winter wheat flour there has been some cutting in prices, sale for straight rollers having taken place at \$5.30 which is a drop of 10c per bbl from former sales. In spring wheat flour there has also been some shading in values, although \$6 is still the quoted price of city strong bakers. A lot of 100 bbs of city strong bakers was reported at \$5.90. The market has ruied very dull during the week and in order to make business, holders have been compelled to make concessions.

**Feed.**—The market for bran is weak and lower, with sales reported at \$16 to \$17 per ton in car lots. Shorts are quiet at 20 to 21c, and Moultrie at \$26 to \$28.

**Oatmeal.**—The weakness and decline in prices noticed in our last has been followed by a further break of 20 to 25c per bbl, granulated and rolled oats being now offered at \$5.90 in round lots, and standard at \$5.80, smaller lots bringing 5 to 10c more money. The market is very unsettled and it is said the above prices have been shaded by some of the Western mills.

**Oats.**—The market is weak and 1 to 1½ lower on the week, No. 2 Ontario being offered at 53c per 34 lb, a lot of 5,000 bushels being offered at that figure. Manitoba mixed oats are dull at 49 to 50c. These prices show a decline of 8 to 9c per bushel from top.

**Butter.**—The market has a decidedly easy trend and although sales of creamery have been made at 23c that price is looked upon as extreme and 22c will probably be the ruling rate before our next issue. Creamery men who refused to sell about ten days ago are now in the city trying to place it. Eastern townships dairy have been placed at 19c to 21c for good choice qualities. Roll butter is easy and lower with sales at 15 to 17c.

**Cheese.**—The market is decidedly on the down grade actual sales on this market showing a decline of ½ to ¾c on the week, and in the country the drop has been ½ to ¾c which will be felt here next week. Country sales have been irregular ranging from 9½ to 9¾c, but the bulk have gone at 9½c.

**Iron and hardware.**—The feature of the market in pig iron is the late arrivals of spring importations, and further sales of Summerlee and Gartscherie have been made to arrive at \$21. A lot of Carabro have also been placed at \$19.50 and another good sized parcel at \$19.25. On spot there is very little doing, the only sale reported to us being a 10 ton lot at \$21. Prices ex store continue firm owing the paucity of spot supplies, but the demand is very light, as buyers are all waiting for their lower priced purchases and consequently only buy small jobbing lots to tide them over. Bar iron is still quoted at \$2.10 to the trade, although that fig-


## BOOTS and SHOES.

Having purchased the stock of Nixon & Co., of Winnipeg, comprising goods manufactured by Thompson & Co. - Montreal.

—AND—

Seguin, Lalime &amp; Co., St. Hyacinthe.

we will clear these lines out at 25% less than any other house in the trade.

SEND IN YOUR ORDERS: 

### C. H. MAHON & CO.,

WINNIPEG, - MAN.

## HUTCHISON, DIGNUM & NISBET,

Manufacturers' Agents and Merchants,  
LINENS, IMPORTED WOOLLENS and TAILORS'  
TRIMMINGS. SELECT CANADIAN TWEEDS  
55 Front St. West, - TORONTO.

—SOLE AGENTS IN CANADA FOR—

J. N. Richardson, Sons & Ouden, Belfast, - Linen Good  
Currie, Lee & Gawn, Hawick, . . . . . Scotch Tweeds  
R. Pringle & Son, Hawick, . . . . . Scotch Underware  
David Moseley & Son, Manchester, . . . . . Rubber Goods  
J. S. Manton & Co., Birmingham, . . . . . Buttons

Stock of Linens, Tweeds and Trimmings  
always on hand.

R. B. HUTCHISON.  
Late Mills & Hutchison)

Ed. J. DIGNUM.

R. A. NISBET

ure is known to have been shaded. Canada plates are very firm, the St. Peter street firm referred to last week having the bulk of supplies in his own hands, and sales of several hundred boxes are reported at \$3.00, smaller parcels commanding \$3.10. Tin plates are firm under continued scarcity, charcoal being held firmly at \$5 on spot and cokes to arrive have sold at \$4.65, there being scarcely any to be had on spot. Terne plates are steady at \$3 and difficult to secure for prompt delivery. Galvanized sheet has been dealt in at the decline mentioned last week sales being reported at 5c for No. 23. In metals there is no change on spot a few lots of Oxford copper having changed hands at 13c and tin has been placed at 22c. For small lots 3c more is obtainable. Although the mill price of 10½ to 60d iron nails is nominally quoted at \$2.10 we know of sales having transpired within the last few days at \$2.

**Hides.**—The hide market remains quiet with buyers gaining an advantage wherever sales take place. Dealers continue to pay 6, 5 and 4c, and tanners 6½ to 6¾c, sales having transpired at both figures to Quebec firms. Calfskins are unchanged at 8c per pound. In dry hides River Plate stock cannot be had at under 13¾c in New York.

**Dry Goods.**—Owing to the continued cold backward weather which lasted up to Wednesday last, business was almost at a stand still in sorting orders for summer goods, but since the warmer spell set in quite a number of small orders by letters have been received direct from customers. Travellers have sent in a few orders for fall goods, but scarcely sufficient, it is said, in many instances, to cover their expenses, as there is a general desire on the part of the best houses to defer their fall purchases until later in the season, when their actual requirements can be better gauged, owing to crop prospects being of a more definite nature. The