

cheek" and "cherry lip," to praise which every poet of the earth has invoked the Muse to aid him. But they are as rare as the cynical Hood conceived Christian charity to be. Woman, eager to retain this charm, resorts to French art and rouge. The effect is similar to that which would be produced by substituting auctioneer's flags for the delicate glowing cloud-banners of the Alps. If woman would aid Nature instead of adopting art, would seek health instead of vainly trying to mask disease, she would not only win the greatest charm of womanhood—health—but she would avert much misery both from herself and others. Dr. Pierce's Favorite Prescription has received the highest praise from thousands of pale, delicate, suffering women. One bottle often affords more relief than months of treatment by caustics and other medicines. It is harmless in any condition of the system, and its use often renders the modest invalid exempt from that most trying of ordeals, a personal consultation with a physician. It is the duty of every woman to become familiar with the causes and symptoms of the many diseases to which her peculiar organization renders her liable, and also to learn the proper means of preventing these maladies. The People's Medical Adviser contains an extensive treatise upon "Woman and her Diseases." The Author also advises courses of domestic treatment, which will often render the services of a physician unnecessary. Every woman should read it. A copy of the Adviser can be obtained by addressing the Author, Dr. R. V. Pierce, at Buffalo, N. Y. Price \$1.50 (postage prepaid). Favorite Prescription is sold by druggists.

OUR CHESS COLUMN.

Solutions to Problems sent in by Correspondents will be duly acknowledged.

Correspondents intended for this department to send Chess Editor, Office of CANADIAN ILLUSTRATED NEWS, Montreal.

TO CORRESPONDENTS

J. W. S. Montreal.—Solution of Problem No. 114 received. The other matters referred to in your letter shall receive attention.

W. J. R. B. Montreal.—Correct solution of Problem No. 112 received.

M. J. M. Quebec.—Any problem you may have on hand we shall be glad to receive. Your contributions are always acceptable.

S. J. S. Montreal.—Correct solution of Problem No. 115 received.

The Annual Chess contest between the rival Universities of England was announced to take place on the day before the recent boat race.

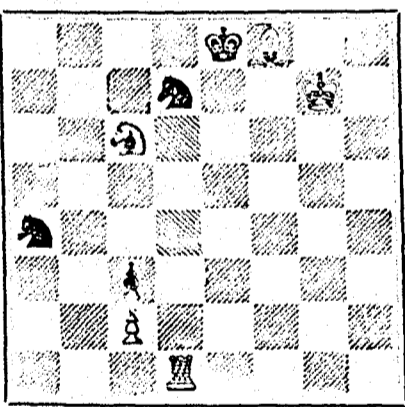
Last year the Oxford players were victorious, scoring twelve games to their antagonists' five.

We shall be anxious to know how matters stand with reference to this year's encounter, and, if possible, will obtain a specimen or two of the play of the best chess amateurs of the great seats of learning.

It appears that a match has just taken place in England between the Athenium Club of Manchester, and the Manchester Club. Thirty players entered their names. Afternoon on each side, and the competitors played two games with each other. The Athenium players were victorious, having scored sixteen games to their adversaries' eleven.

PROBLEM No. 116. By A. CYRIL PEARSON.

BLACK



WHITE

White to play and mate in three moves.

CHESS IN CANADA.

GAME 167TH.

Played at the Montreal Chess Club in the recent match between Messrs. Henderson and Shaw.

Remove White's Queen's Knight.

WHITE.—(Mr. H.)	BLACK.—(Mr. S.)
1. P to K 4	P to K 4
2. P to K B 4	P takes P
3. Kt to B 3	P to K Kt 4
4. B to B 4	P to Q 3
5. P to Q 4	B to K 3
6. Q to Q 3	B takes B
7. Q takes B	P to Q B 3
8. P to K 5	P takes P
9. Kt takes P	Q to Q 4
10. Q to K 2	B to K 2
11. P to Q B 3	Kt to Q 2
12. Kt takes Kt (a)	Q takes Kt
13. Castles	Castles
14. P to Q Kt 4	R to K sq
15. Q to K 5	B to B 3
16. Q to R 5	B takes P (ch)
17. P takes B	Q takes P (ch)
18. B to K 3	Q takes B (ch)
19. K to R sq	R to K 4
20. P to Kt 5	B takes P
21. Q to R 4	Kt to R 3
22. K R to K sq	Q to Kt 3
23. K R to Q sq	Kt to Kt 5
24. R to Q 4	Kt checks (b)
25. K to Kt sq	Kt to Q 6
26. R to Q sq	R to K 5

And White resigns.

NOTES.

(a) By this move and one or two of the preceding, White aids his opponent in his manifest object of changing off pieces.  
(b) The latter part of this skirmish is well played by Black.

GAME 168TH.

CHESS IN SCOTLAND.

The following is the concluding game in a match contested some time ago, at Glasgow between Messrs. Crum and Murray for the West of Scotland Challenge Cup.

(Queen's Gambit Accepted.)

WHITE.—(Mr. C.)	BLACK.—(Mr. M.)
1. P to Q 4	P to Q 4
2. P to K B 4	P takes P
3. P to K 3	P to K 3 (a)
4. B takes P	Kt to K B 3
5. Kt to Q B 3	B to Q Kt 5 (b)
6. K Kt to K 2	Castles
7. Castles	P to Q B 3
8. P to K 4	P to K R 3
9. P to Q R 3	B to K 2
10. P to Q Kt 4	P to Q Kt 3
11. Kt to K Kt 3	B to Q Kt 2
12. B to Q Kt 3	Kt to K R 2
13. B to K 3	B to Q R 3
14. R to K sq	B to Q Kt 2
15. P to K B 4	B to K R 5
16. Q to K Kt 4 (c)	B takes Kt
17. Q takes B	K to R sq
18. Q R to Q sq	Kt to K B 3
19. B to K B 2	Q Kt to Q 2
20. Q to K R 2	Q to Q B sq
21. P to K B 5	P takes P
22. Q takes P	P to Q Kt 4
23. B to K Kt 3	Kt to Q Kt 3
24. Q to K B sq	Kt to Kt sq
25. B to K B 4	P to Q R 4 (d)
26. B takes K R P	P takes P
27. P takes P	R to R 6
28. R to Q Kt sq	Kt to Q B 5 (e)
29. B to Q B sq	R to Q R 2
30. B takes Kt	P takes B
31. Q takes P	Q to Q 2
32. P to K R 3	R to K sq
33. B to K Kt 5	Kt to K R 2
34. B to K R 4	B to Q R 3
35. Q to Q B 5	B to Q 6
36. Q R to Q sq	B to Q Kt 4
37. P to Q 5	R to Q Kt 2
38. Kt takes B	

And after a few moves Black resigned.

NOTES.

(a) The usual move is 3. P to K 4, for the purpose of facilitating the first player's Queen's Pawn.

(b) Better we should have thought to play 5. B to K 2

(c) White has already obtained a very superior position, and winning should be a mere matter of time.

(d) Over-looking, apparently, the very obvious threat of White's last move.

(e) Worse and worse; after this his game is beyond redemption.

SOLUTIONS.

Solution of Problem No. 114.

WHITE.	BLACK.
1. R to B 4	K takes R (A)
2. P to Q 4	Anything
3. Kt to Q 3 mate	

(A) Pawn moves

Solution of Problem for Young Players, No. 112.

WHITE.	BLACK.
1. R to Q Kt 2	R to Q Kt 8 (best)
2. Kt to K 5 (ch by dis)	Kt to Q sq
3. Kt mates	

PROBLEMS FOR YOUNG PLAYERS NO. 113.

WHITE.	BLACK.
Kt to Q B 3	K to K B 3
Q to K R 4	B to Q R 3
R to K R 2	Pawn at K 2
Kt at Q B 7	
Pawns at Q 2, K 4, K B 3 and 7	

White to play and mate in two moves.

EVERYTHING

IN THE

BEDDING LINE

AT

Whiteside's Bedding House,

1377 ST. CATHERINE STREET.

FACTORY—66 COLLEGE STREET.

MONTREAL. 15-14-5-231

ICE! PURE ICE!

SEASON 1877.

D. MORRICE & CO.,

Established over 20 years.

OLDEST, SUREST AND BEST.

PRICES.

10 lbs. per day for the Season.....	\$ 5.00
20 lbs. do do do.....	8.00
30 lbs. do do do.....	10.00
40 lbs. do do do.....	12.00
50 lbs. do do do.....	14.00
10 lbs. do do per month.....	1.25
20 lbs. do do do.....	1.75

Every Block of Ice Cut above the Bridge  
Careful and obliging drivers engaged.  
City Ice Office, 2 Victoria Square. 15-12-2-239

HARLAND'S VARNISH.

Wanted, some new and reliable glass chimneys and lamp goods. NO PEDDLING. Salary liberal, business permanent. Hotel and traveling expenses paid.  
MONITOR LAMP CO., 264 Main St., Cincinnati, Ohio.

TO LET

A FIRST-CLASS BRICK DWELLING, No. 1464 Abbotford Terrace (opposite Emmanuel Church), St. Catherine Street, in good order, well drained, and rat-proof. Rent moderate.  
Apply to G. B. BURLAND, Burland-Desbarats Lith. Co., Bleury St.

STEINAU JEWELRY CO.

The only house in America making a specialty of the Manufacture and Importation of

CHEAP JEWELRY.

THE LATEST NOVELTIES AND THE LOWEST PRICES.

Dealers in General Merchandise, Fancy Goods, and Perfumery will find valuable information in our NEW ILLUSTRATED PRICE LIST for 1877, in book form, containing over 1,000 full-sized engravings of the latest styles of all kinds of Jewelry, Watches, etc. Mailed free, on receipt of 9 cents postage. Orders solicited from the Far West and Canada.

STEINAU JEWELRY CO.,

Box 816, 70 W. 4th St., CINCINNATI, O.

15-12-13-221

CANADIAN HISTORY!

THE COMPLETE WORKS OF J. M. LEMOINE:

QUEBEC, PAST AND PRESENT, Illustrated and Bound, \$2.

MAPLE LEAVES for 1863-4-5, 3 vols. Editions exhausted, may be procured by advertising.

MAPLE LEAVES for 1873, \$1.

THE TOURIST'S NOTE BOOK, Second Edition, \$0.25.

LES OISEAUX DU CANADA, very rare, \$5.

ALBUM DU TOURISTE, \$1.

MEMOIRE DE MONGALM VENGÉE—rare, \$1.

NOTES HISTORIQUES SUR LES RUES DE QUÉBEC, \$0.25.

DAWSON & CO.,

LOWER TOWN,

QUEBEC,

or DAWSON BROS.,

MONTREAL.



For sale by MCGIBBON & BAIRD, DAVID CRAWFORD, St. James Street, DUFRÈNE & MONGENAIS, Notre Dame Street, and by Grocers generally throughout the Dominion. 15-10-26-216

APPROVED BY THE MEDICAL FACULTY.

DEVIN'S WORM PASTILLES.  
The most effectual Remedy for Worms in Children or Adults.  
Le meilleur remède contre les vers chez les enfants ou adults.  
PASTILLES DE DEVINS CONTRE LES VERS  
APPROUVEES PAR LA FACULTE MEDICALE

A Box will be sent to any address in Canada (post paid) on receipt of 25 cents. DEVINS & BOLTON, Druggists, Montreal.

THE COOK'S FRIEND

BAKING POWDER

Has become a HOUSEHOLD WORD in the land, and is a HOUSEHOLD NECESSITY

In every family where Economy and Health are studied is used for raising all kinds of Bread, Rolls, Pan cakes, Griddle Cakes, &c., &c., and a small quantity used in Pie Crust, Puddings, or other Pastry, will save the usual shortening, and make the food more digestible

THE COOK'S FRIEND

SAVES TIME, IT SAVES TEMPER, IT SAVES MONEY.

For sale by storekeepers throughout the Dominion and wholesale by the manufacturer.

W. D. McLAREN, UNION MILLS, 13-17-52-110, 55 College Street.

CHEAPEST AND BEST.



JOHN DOUGALL & SON,

218 and 220, St. James Street, Montreal.

Electrotyping and Job Printing, Chromatic and Plain cheaply and neatly done.

Fun and Amusement! 48 Styles, the Best Out!

Transparent Cards.

25 blank, 15c; 25 printed, 2c. 25 Bristol Cards, 10c; 25 Snowflake, 20c; 12 beautiful Chromo cards 20c; 25 Mixed Cards, 20c. 9 samples sent for 3c stamp. We have over 200 styles. Agents Wanted. Order of the old established and reliable firm, A. H. FULLER & Co., Brockton, Mass.

New Work of Vital Interest.

Post Free 12 Cents or 6d. stig.

FROM

J. WILLIAMS, P. M.

22, MARISCHAL STREET, ABERDEEN, SCOTLAND,

NORTH BRITAIN.

A LONG AND HEALTHY LIFE.

CONTENTS:

- 1.—Medical Advice to the Invalid.
  - 2.—Approved Prescriptions for Various Ailments.
  - 3.—Phosphorus as a Remedy for Melancholia, loss of Nerve Power, Depression, and Feeble Digestion.
  - 4.—Salt Baths, and their Efficacy in Nervous Ailments.
  - 5.—The Coca Leaf a Restorer of Health and Strength.
- 14-25-52-197

50 WHITE BRISTOL VISITING CARDS, with your name finely printed, sent for 25 cents. 1000 AGENTS WANTED. Samples 3c stamp. No postals. Address A.W. Kinney, Yarmouth, N.S. 15-12-13-223.

CASH Paid for Cast-off Clothing. Address H. VINEBERG, 631 Craig St., a few doors east of Bleury. 15-12-13-222.

P. F. MANNING, TAILOR, No. Corner Fortification Lane, Montreal. Gentlemen's and Youths' Clothes Cut, Made and Trimmed. Particular attention paid to Clearing, Altering and Repairing. 15-12-13-226.

EMPLOYMENT. We are offering good pay, and steady work for one or two enterprising men or women in each County. Send for the most complete Illustrated Chromo Catalogue ever published. W. H. HOPE, 26 Bleury Street, Montreal. 15-10-26-216

ROWNTREES' Prize Medal ROCK COCOA

The popularity of this Rich and Nourishing preparation is due to the facts

- I.—That it contains COCOA and SUGAR ONLY, without any admixture of Fat.
  - II.—That the proportion of Cocoa to Sugar is exceptionally large.
  - III.—That the Cocoa used is not robbed of any of its nourishing constituents.
  - IV.—That the delicate flavor of the Cocoa is not hidden by any other flavor.
- 15-9-26-214

SHOPS TO LET.

Two fine, commodious Shops to let, No. 9 and No. 11, BLEURY ST.

Both heated by steam—one of them well fitted up with shelves, drawers, &c., and very suitable for a Tailor or Milliner's Establishment.

Apply to the BURLAND-DESBARATS LITH. CO. 5 and 7 Bleury Street.

OFFICES TO LET.

ONE LARGE FLAT over Mr. Latham's Drug Store, corner of Craig and Bleury Streets; also TWO FLATS in the adjoining building on Craig Street, well adapted for Offices or any Light Manufacturing Business, with or without Steam.

Apply to the BURLAND-DESBARATS LITH. CO. 5 and 7 Bleury Street.