

DRAUGHTS-CHECKERS

All communications to this department must be addressed directly to the Checker Editor, Mr. W. Forsyth, 36 Grafton St.

TO CORRESPONDENTS.

The copy of "Hill's Synopsis" ordered by a friend in Trenton, New Glasgow, Pictou County, has been mailed.

M. J. KEATING, Charlottetown, P. E. I.—A copy of "Hill's Synopsis" has been mailed to you as directed. Please acknowledge.

A. C. R.—The December number of the American Checker Review is at hand, and is fully up to the progressive type of its predecessors. No student of the game who wishes to keep abreast of the times can afford to fail to subscribe to this admirable checker magazine. It costs only \$1.50 per year. Address: 137 Blue Island Avenue, Chicago, Ills. By subscribing now you can commence with the first number of vol. V. By the way, we would call the attention of the A.C.R. to the fact that it does not clearly show to what column its comments and variations belong. If it would follow our example and put a hyphen or "leader" between the move on which it wishes to comment and the letter or figure calling attention thereto, it would facilitate the understanding of its readers.

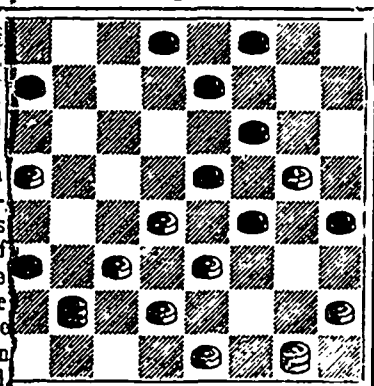
SOLUTION.

PROBLEM 309.—The position was: Black men 13, 16, kings 5, 21, 32; white men 22, 23, kings 4, 17, 27; white to play and draw. In response to our request for solutions to the above very pretty problem, we have received two correct answers—one from our old friend, George O. Forbes, of Shubenacadie, and the other from John Mansfield, of Springhill Mines, whom, though he has hitherto been a stranger, we are very happy to welcome into the fold.

Table with 5 columns and 5 rows of numbers representing draught positions.

PROBLEM No. 311.

"Suo Marte," 10 years old, in the Liverpool Mercury. Black men 2, 3, 5, 7, 11, 15, 19, 20, 21, king 25.



White men 13, 16, 18, 22, 23, 26, 28, 31, king 32.

White to play and win by capturing or evicting all the pieces on the 13th move.

GAME 197—"DEFIANCE."

Table with 5 columns and 5 rows of numbers representing draught positions for Game 197.

Table with 5 columns and 5 rows of numbers representing draught positions.

a—This is almost universally adopted, and is probably the strongest move at Black's command. b.—A judicious waiting move. c.—This is not generally considered strong, but is worth playing, if only for the trap which finishes off the game.

PARSONS



PILLS

Make New Rich Blood

"Best Liver Pill Made."

They positively cure SICK HEADACHE and PAINFULNESS, all Liver and Bowel Complaints. In Glass Vials. Three in a bottle, one a dose. They expel all impurities from the blood. Delicate women find great benefit from using them. Sold everywhere, or sent by mail for 25 cts. In stamps; five bottles \$1.00. Full particulars from L. S. JONES & CO., 22, South House St., Boston, Mass.

WE LIVE IN A PROGRESSIVE AGE

WE

Aim to Improve!

AND NOT DETERIORATE.

Our New Brand, the

Cable Extra

will be found to be exceptionally fine, and we respectfully suggest that smokers give this brand a trial, when our statement will be fully verified as to quality.

S. DAVIS & SONS.

GILLETT'S



LYE

PUREST, STRONGEST, BEST.

Ready for use in any quantity. For making Eye Softening Water, Disinfecting, and a hundred other uses. A can equals 20 pounds of Soda. Sold by All Grocers and Druggists. E. W. GILLETT, Toronto.

IMPORTANT to FLESHY PEOPLE

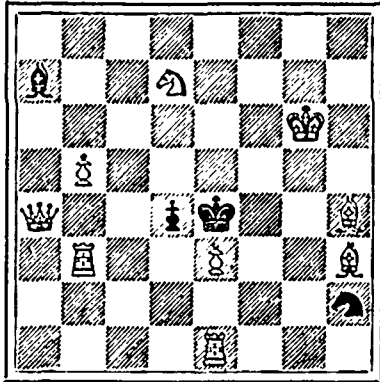
We have noticed a page article in the Boston Globe on reducing weight at a very small expense. It will pay our readers to send two cent stamp for a copy to Walker Circulating Library, to Hamilton Place, Boston, Mass.

CHESS.

PROBLEM No. 142.—Q to R6. Solved by C. W. L.

PROBLEM 144.

Land and Water. Black 4 pieces.



White 9 pieces.

White to play and mate in two moves.

Game 146.

F. J. Lee. D. Middleton

- 1 P to K4 P to K4
2 KkT to B3 QkT to B3
3 Kt to B3 P to Q3
4 B to Kt5 B to Kt5
5 P to Q3 P to KR3
6 B to K3 KkT to K2
7 Castles Kt to Kt3
8 Kt to K2? B takes Kt
9 P takes B P to QR3
10 B takes Kt P takes B
11 Kt to Kt3 P to KR4
12 Kt to B5 P to R5
13 K to R sq Q to B3
14 R to K Kt eq Kt to B5
15 B takes Kt P takes B
16 P to B3 P to B4
17 Q to R4 ch K to Q sq
18 Q to B6 QR to Kt sq
19 R to Kt4 R takes P
20 R takes BP? Q to K4
21 Kt takes QP? B takes Kt
22 Q to R8 ch K to K2
23 R takes P ch K takes R
24 Q to Q5 ch K to B3
25 Q takes Q ch B tks. Q and wins.

Lee's 21st move brought a reply that was fatal on account of the impending mate on at KR's 7. Perhaps 21, Kt takes KtP, was his first consideration and only dismissed because of 21...Q takes Kt!; 22, R to KkT sq, Q takes Rch!; 23, K takes R, R to Kt8 ch; 24, K to Kt2, P to R6 ch; 25, K to Kt3, R to KkT8 mate. The sacrifice, 21, Kt takes KtP, if accepted by B takes Kt, would have paid well: Ex gra—22, R takes BP, Q to K3; 23, Q takes BP ch, K to K sq; 24, R takes B, &c. Very often in the rapidity of simultaneous play the consideration and rejection of one way of making a sacrifice—almost sound, may be followed by the hurried adoption of an alternative method (as in this case) less sound.

IMPERIAL CREAM TARTAR



BAKING POWDER

PUREST, STRONGEST, BEST. Contains no Alum, Ammonia, Lime, Phosphates, or any Injurious. E. W. GILLETT, Toronto, Ont.

Have you tried the 'Cable Extra' CIGAR?



FURS! FURS! FURS!

Useful Xmas Presents. Ladies' Seal & Persian Jackets ALSO Storm Collars, Capes, Muffs, Gauntlets, &c. In all the Fashionable Furs.

Fur-lined Russian Circulars VERY CHEAP, AT COLEMAN'S, 143 GRANVILLE ST.

Printed by Halifax Printing Co., 161 Hollis St.

Powell's Pimple Pills advertisement featuring an illustration of a woman's face and text: POWELL'S PIMPLE PILLS Act Like Magic IN REMOVING ALL BLEMISHES FROM THE SKIN. PRICE 25 CENTS. For sale by all Drug gists, or sent on receipt of price, by HATTIE & MYLIUS, HALIFAX, CANADA.