

Annual Report Of The Miramichi Hospital

May 1st 1920 to April 30th 1921

Chairman's Report

The Board of Trustees of Miramichi Hospital herewith present their report for the year ending 30th April, 1921.

The work of the Hospital has been actively carried on throughout the year in a highly successful manner, and the records of the institution show a wonderful increase over any preceding year.

From the Superintendent's report it will be noted that 438 patients were admitted during the year, an increase of 29 p. c. over the figures for 1920.

The Treasurer's report shows the amount received from patients to be \$15,954.21, and this compared with \$10,959.39 the preceding year is an increase of 45 p. c.

These figures give evidence of wonderful growth and progress.

Notwithstanding these record receipts and various grants and contributions in addition, an analysis of the Treasurer's report will show that for the year just closed the receipts just about balance the expenditures. A comparative statement submitted by the Treasurer reveals the fact that the cost of maintenance due to extreme prices has increased during the past two years by over \$7000.00, or 56 p. c. It is well, moreover, to bear in mind that the Hospital will, no doubt, feel the period of financial depression through which we are passing, and therefore, we appeal to all for continued, whole-hearted support, while the Board must proceed with a policy of cautious expenditure.

In this connection the Board acknowledges with many thanks generous grants and contributions received, and we particularly tender our appreciation to the Hospital Aid, who by their splendid assistance have made the task of Hospital maintenance a much lighter one. Over \$1200.00 was expended for the Hospital by the Newcastle Aid and its auxiliaries in equipment, and the Board is deeply sensible of what the Aid has done and is doing in behalf of the Hospital.

Personal

The Board mourns the death of two of its members since our last Annual Meeting—Our Honorary President, Mrs. Hutchison died suddenly in Boston on March 23rd last. By her passing Miramichi Hospital lost a true friend, who was at all times most deeply interested in the welfare of the Hospital. Like her husband, Mrs. Hutchison's generosity towards the institution is well known to all the members of the Board. The other deceased member is Mr. D. J. Buckley, who passed away at his residence, Newcastle, on the 28th of October last—a gentleman who always manifested an active interest in the affairs of the Hospital, he will be remembered among other things as the originator of the employer's payroll subscription scheme, which has worked out so splendidly and been such financial assistance to us during the past two years. Mr. Buckley's place on the Board was taken by Mr. J. R. Lawlor.

Nursing Staff

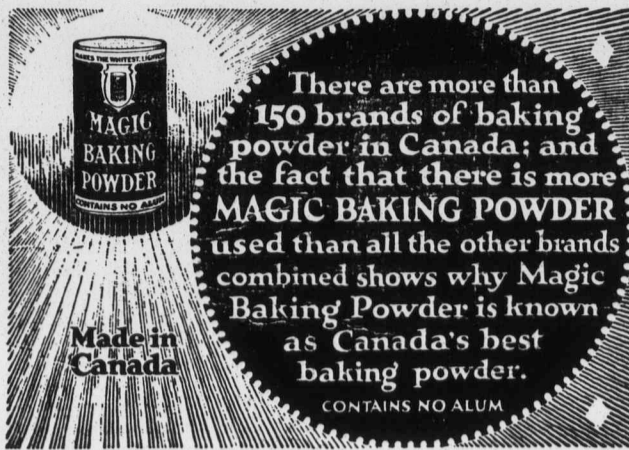
Much credit is due the Superintendent and Nursing Staff for faithful service during the year. They have displayed a keen interest in their work and are loyal to the institution. We regret that a temporary breakdown due to overwork compelled Miss Keyes to rest for three months during the past winter, but we are glad that she is able to resume her duties again. During her absence Miss Lockerbie acted as Superintendent in a very satisfactory manner.

Nurse's Home

The outstanding need of the Hospital at the present time is a Nurse's Home. Adequate accommodations and comfortable quarters for the Nursing Staff are absolutely essential, if we expect efficient service from the Nurses.

A fund for this purpose has already been started and generous contributions made to it. In view of present industrial conditions, it has not been deemed advisable to make an active move in the matter as yet. The project, however must be kept before us for prompt action just as soon as conditions warrant our moving in the matter; and in the meantime, we invite the assistance and support of all friends of the institution towards this object and urge contributions towards the fund whenever possible.

The Board desires to express its appreciation to the Medical Staff for their co-operation during the year, and we also take this



opportunity of thanking friends of the Hospital for many gifts of fruit, delicacies, etc., all of which added greatly to the comfort of the patients.

With this Annual Meeting Miramichi Hospital completes five years of its existence. It has been the aim and purpose of the Board during that time to conduct the institution in accordance with the ideas and plans of its founder, and from the reports which are presented to-night, we are bound to feel that the Hospital is doing a great work of usefulness in the life of the community. To the furtherance of that work, and there is much yet to be done, we ask the co-operation and loyal support of all citizens of our community.

On behalf of the Board

(Sgd) G. P. BURCHILL, Chairman.

Treasurer's Report

Newcastle, N. B., May 27th 1921

To The Chairman and Trustees of the Miramichi Hospital, Newcastle, N. B.

Ladies and Gentlemen:—

I beg to submit my fifth annual report as Treasurer of the Miramichi Hospital for the fiscal year beginning May 1, 1920 and ending April 30th, 1921. I have received during the year, from your Secretary, the amounts specified below under the heading of "Receipts", and I have also made duly authorized payments as specified under the heading of "Expenditures".

Receipts

Balance on Savings Account with the Royal Bank	\$2,060.00
" " Current Account " " " "	1,512.90
	3,572.90
Receipts from Payments during the year	\$15,954.21
Grant from County of Northumberland	1000.00
" " Town of Newcastle	500.00
" " St. James' Church	100.00
" " Highland Society	250.00
	1,850.00
Donation from Lord Beaverbrook	500.00
" " A Friend	5.00
" " Earl of Chatham I.O.D.E.	325.00
" " Sinclair Children	1.54
" " E. Sinclair Lbr. Co.	269.14
" " Fraser Companies, Ltd.	504.61
" " D. & J. Ritchie & Co.	219.61
" " Southwest Boom Co.	173.74
" " George Burchill & Sons	180.00
" " James Robinson	148.44
" " St. Andrew's Presbyterian Church, Chatham, N. B. St. John's Pres. Church, Chatham, N. B. St. Luke's, Meth. Church, Chatham, N. B. St. Mark's Pres. Church, Douglastown, N. B., and Knox Pres. Church, Loggieville, N. B.	38.23
	2,365.31
House rent paid by Mrs. H. Whitney	66.00
Ada Luke—a-c Hartz account of Aug. 12th 1920	1.75
Interest on Savings Account Balance	50.30
Telephone Calls Collected	21.90
	139.95
	\$23,822.37

Expenditures

Salaries paid the Hospital Staff	\$6,500.10
Provisions, Groceries and Milk	4,078.61
Electric Light and Power	319.80
Fuel	3,176.71
Drugs and Surgical Supplies	1,427.92
Garden Expenses	362.46
Insurance Premium on Ambulance	5.00
R. B. of Canada—Purchase of \$2,000 V. Bond	1,869.41
Telephone	93.61
House Account for Year	544.26
Printing, etc.	101.32
Expressage and Truckage	107.83
Repairs, such as Painting, etc., Labor	839.66
Patients' Record Book	20.40
Repairs to Boiler	265.61
Sections for Boiler	369.66
Sheating, etc.	226.72
X-Ray Supplies and Graduating Pins	68.90
Ambulance	85.50
Washing, Mrs. Geo. Campbell	127.15
Preserves and Pickles	38.20
One Cow	80.00
One Pig	18.00
Sundries	1,232.69
	22,022.52
Balance on Savings with Royal Bank	180.89
" " Current Account with Royal Bank	1,618.96
	23,822.37

Respectfully submitted,

(sgd.) E. A. McCURDY,

Treasurer.

Audited and found correct

(sgd)

L. D. MURRAY,
A. G. PUTNAM, Auditors.

The above figures do not include Hospital Supplies and Equipment provided by the Newcastle Hospital Aid and its Auxiliary Branches, amounting to over Twelve Hundred Dollars (\$1200)

The Miramichi Hospital Nurses' Home Fund

Statement of Donations Received

1920		
Nov. 15	Lord Beaverbrook Chap. I.O.D.E. Proceeds from Tag Day	\$ 519.29
" 19	Miramichi Hospital Aid, a-c A. D. Farrah & Co's Sale	405.00
" 19	Donation from A. D. Farrah & Co.	35.00
" 19	Donation from C. G. Coudsi	25.00
" 25	Rev. E. S. Murdoch	10.00
" 25	Rev. P. W. Dixon	10.00
" 29	Proceeds of Dance, Nov. 19th,	87.30
" 30	Collected by Mrs. L. D. Murray in Burnt Church	45.00
Dec. 18	Mrs. Josephine Sargeant, Nelson, N. B.	5.00
" 20	J. D. Creaghan & Co., Ltd.	200.00
1921		
Jan. 4	Whitneyville Hospital Aid	36.18
" 4	Dr. W. A. Wilson	25.00
" 17	Lord Beaverbrook Chap. I.O.D.E. Proceeds Benefit Night at Dime	110.15
" "	Lord Beaverbrook Chap. I.O.D.E. Proceeds of Supper after Rink	17.20
" 20	R. Corry Clark	1000.00
" 22	Highland Society	100.00
" 24	Miss Louise Manny	10.00
Apr. 19	Lord Beaverbrook	1000.00
" 22	Lord Beaverbrook Chap. I.O.D.E.	25.00
May 19	Lord Beaverbrook Chap. I.O.D.E.	109.89
		\$3835.01

Respectfully submitted,
(Sgd) E. A. McCURDY
Treasurer.

Audited and found correct,
L. D. MURRAY
A. G. PUTNAM
Auditors

To Be Continued Next Week

MINNESOTA MEN WANT FREE LUMBER

Washington, June 13—An important stage in the bitter struggle over the proposed tariff on lumber from Canada was reached today when the question was put up to President Harding. A delegation of Minnesota Republicans, after consulting with Secretary of Commerce Hoover, made formal protest against the proposed duty.

Representatives of western pine interests have filed a protest against the duty with the house and ways committee, whereas Douglas fir interests have declared in favor of it. A caucus of Republican representatives is being arranged with the object of persuading them to oppose the duty when the bill comes before the house. Representative Newton, who headed the Minnesota group, declared that in the Payne-Aldrich fight, Minnesota was a unit for free lumber. "The ways and means committee, he said, "has agreed on a retaliatory provision which would make finished lumber subject, as in the case of Canada, to a 25 per cent ad valorem duty and in addition has put a tax of \$1 a thousand feet on logs. "The delegation protested against the party being placed in an embarrassing position."

HON. W. E. FOSTER REACHES QUEBEC

Quebec, June 13—Premier Foster, of New Brunswick, arrived from London on the liner Megantic from Liverpool yesterday. The Megantic had an uneventful voyage until she struck fog and ice off the Newfoundland banks, when some excitement was caused by the receipt of an S. O. S. signal from the American steamer Charlot, which had struck an iceberg. In answer to the Charlot's calls for help, Captain Berry took his ship sixty miles out of her course, but further action was rendered unnecessary when the Charlot reported that she would be able to make St. John's, Nfld., under her own steam.

PILES

Do not suffer another day with itching, bleeding, or protruding Piles. No surgical operation required. Dr. Chase's Ointment will relieve you at once and afford lasting benefit. See a box at all dealers, or Edmanston, Bates & Co., Limited, Toronto. Sample box free if you mention this paper and enclose 20c stamp to pay postage.

WILSON'S FLY PADS

Kill them all, and the germs too. 10c a packet at Druggists, Grocers and General Stores.

Speed of a Comet

It is difficult to conceive how terrific is the speed of a comet as it sweeps round the sun. Sir Robert Ball estimated that when a comet approaches the sun its place becomes gradually quicker and quicker until it is sometimes 20,000 times faster than an express train. It is sometimes more than 1,000 times as fast as the swiftest of rifle bullets, or at the rate of 200 miles a second. A case has been known in which a comet, after coming in for an incalculable length of time towards the sun, has acquired a speed so tremendous that in two hours it has whirled round the sun and has commenced to return to the depths of outer space.

SUBURBAN TO BE PUT ON JUNE 26

On the change of time table, June 26th, an extra train is to be added to those arriving and departing from Campbellton. This train will be known as the suburban between Campbellton and Bathurst. The hour of arrival and departure has not as yet been definitely settled, but it is expected the train will leave Campbellton about 6.25 p. m. and arrive at 11.55 a. m.

This train is to be an electric motor service. The car will contain the electric motor, a baggage compartment, and a compartment for passengers sufficient to accommodate from 50 to 60 passengers. The power will be supplied by electric storage batteries, these batteries being placed at seven hours. These batteries will contain more than enough power for the round trip, being charged with sufficient to run the car 150 miles, which would leave a surplus of 30 miles.

This suburban service will be welcomed by Campbellton citizens as well as all those living between there and Bathurst.

BEAVER FLOUR

MAKES
BETTER
BAKINGS

THE reason why BEAVER FLOUR makes such light, flaky pastry, and such excellent bread, is—it is a blended Flour.

BEAVER FLOUR is a combination of the world-famed Ontario Winter Wheat scientifically blended with enough Western Hard Wheat to give it strength—the resulting product is flour unsurpassed for high quality and richness of flavor.

Try BEAVER FLOUR and note the marked improvement in your bakings.

Sold at your grocer's.

The T. H. TAYLOR CO.
Limited,
CHATHAM, ONT.

