

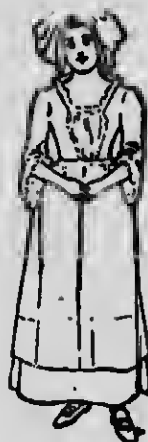
Take your "Lady of the Beeches"
And your rifle and your line

—TO—

Nova Scotia ^{A N D} New Brunswick

THESE NAMES ARE SYNONYMOUS WITH

MOOSE TROUT WOODCOCK
SALMON



"LAND OF
EVANGELINE ROUTE"

Dominion Atlantic Railway

DOMINION ATLANTIC RAILWAY STEAMSHIP LINES

DIRECT FROM BOSTON

Ask us for information re Clubs, Camps, Hotels,
Lakes, Streams and Meadows, with which these
Sister Provinces abound. Let us engage or put
you in communication with a competent guide.

J. F. MASTERS,

NEW ENGLAND SUPT.

225 WASHINGTON ST.,

BOSTON, MASS.

R. U. PARKER,

GER. PASS. AGENT,

KENTVILLE,

NOVA SCOTIA.

P. GIFKINS, - GENERAL MANAGER

EASTERN STEAMSHIP COMPANY

THE INTERNATIONAL ROUTE

— BETWEEN —

BOSTON, MASS.

— AND —

PORTLAND, ME.

AND ALL POINTS IN

New Brunswick

Nova Scotia

Prince Edward Island

and Newfoundland

DIRECT SERVICE

THREE TRIPS WEEKLY—JUNE 19TH TO SEPTEMBER 30TH.

COASTWISE SERVICE

THE YEAR ROUND

Steel Steamships: "Calvin Austin," "Governor Cobb,"
"Governor Dingley."

Complete Wireless Telegraph Equipment. Well-lighted and Ventilated
Cabins and Saloons. Spacious Lounging and Promenade Decks. Main
Deck Observation Dining Rooms. Clean, Comfortable, Exclusive
Staterooms. Convenient Writing Desks for Passengers.

Inquire of your nearest Ticket or Tourist Agent, or write to
General Passenger Agent, for Time Tables, illustrated literature and
complete information concerning Fares, Schedules, Connections,
Hotels, Camps, Guides, Resorts, etc.

CALVIN AUSTIN,

PRESIDENT.

C. C. BROWN,

GENERAL PASSENGER AGENT.

FOSTER'S WHARF, BOSTON, MASS.