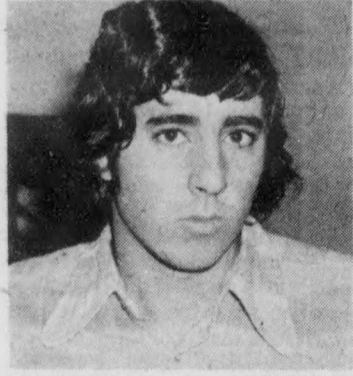


Viewpoint

There will be no more pubs in McConnell Hall. What do you think of that?

interviews by Sheryl Wright

photos by Tim Gorman



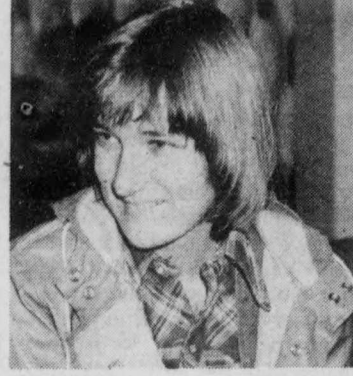
Randy McKeen Science 3

I don't think it's a very good idea. It's the only place large enough to hold a decent pub.



Dale Smith Forestry 2

I think they should have them there, unless it spoils the eating place.



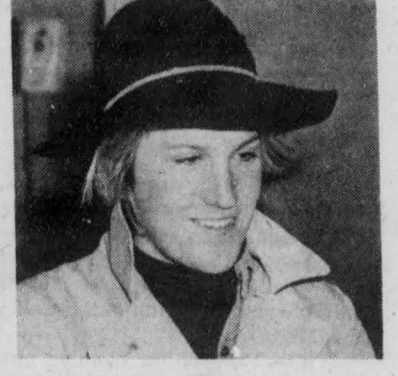
Ann Harvey Science 1

If it does leave a mess and a smell then they shouldn't have them because it's kind of disgusting to eat breakfast in the smell of stale beer.



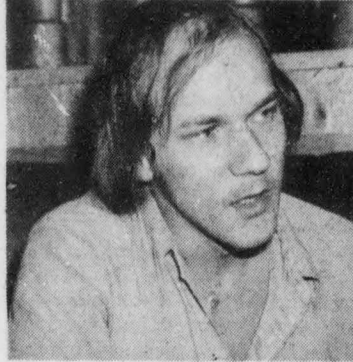
Eric Emery Ed. 5

I'm not in favour of closing it to pubs because it's the only place large enough to catch good bands coming to town. Some bands aren't coming into town anymore because of the closure of McConnell Hall pubs.



Katharine Dauphinee Arts 2

McConnell isn't suitable for pubs, really. I went to one and it was lousy. The facilities are inadequate.



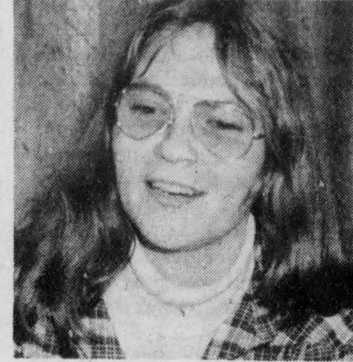
Levi Du John Arts 1

I don't think they should cancel pubs there because I think UNB is lacking student spirit and the only way to get any spirit at all is to get the students together.



Stuart Thorburn BSc 3

I think it's kind of stupid to close McConnell to pubs.



Helena Pelkman Arts 1

I think something non-alcoholic in McConnell would be fine. There are enough pubs in the SUB to do the students.



Mike Gange Arts 2

I don't think it's fair of the students who are living in a subsidized residence to dictate their wants to the majority of the campus.

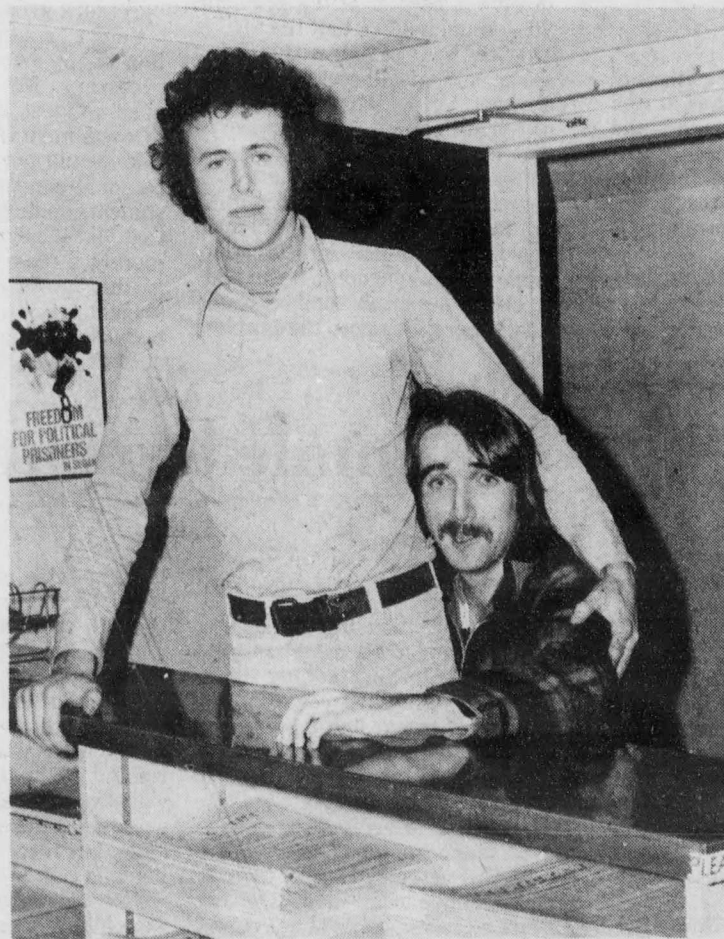


Larry Dickison BA 1

They've got a pretty good case for closing it. They don't have to use every facility they have for liquor-oriented pubs.

THE BRUNSWICKAN

*absolutely
no experience
necessary*



YOU'LL BE
SURE
TO
FIT
RIGHT
IN
!

Dear Editor

As a student letter to express my opinions to you pointed out last Friday to remind you that I proffered my resignation to SRC. He in the quest for nothing was to make his point since I know or may encourage and admit.

But what has been famous since live on books, tokens, ed bookish k encumber afford encourage. As Dr. correct university either professorings, etc these are education combina student's professoricular it is com often the satisfied anced e (university) Probab know w suppose

M

with re role w policy decision review necess This solution labour day of SRC co student appro the p guidel appro "pres gover unten and s every a con gleam gener forbi cand platf than appe year stud but indic Thir 1) to a 2)