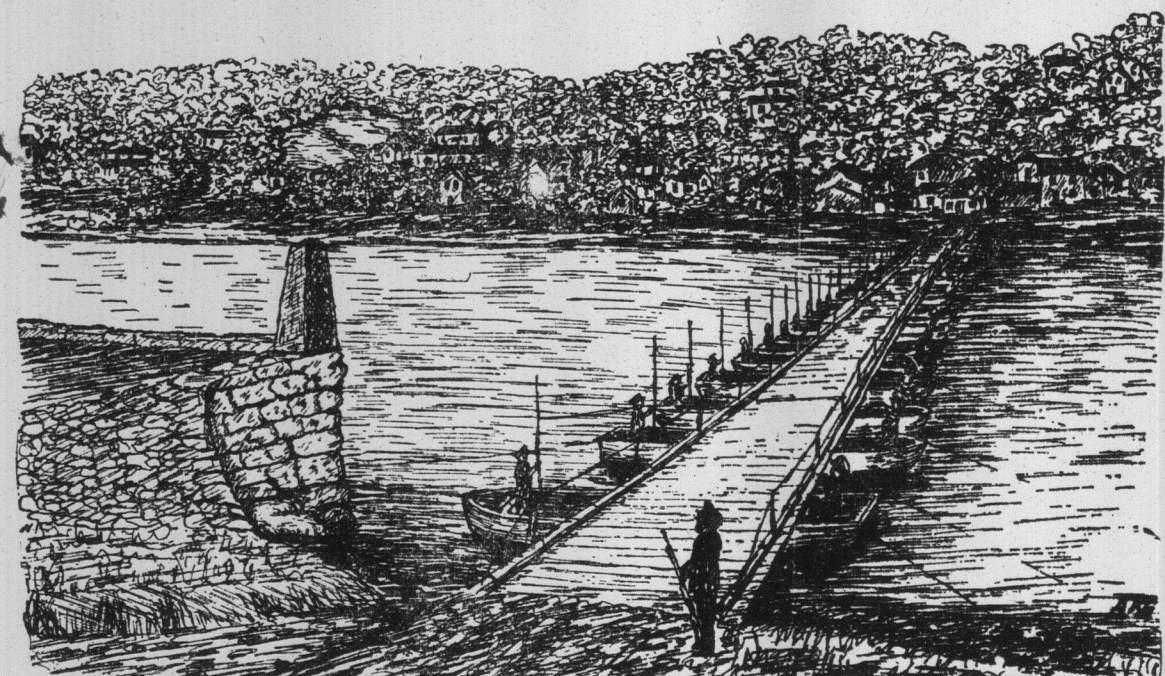


THE EVENING TIMES AND STAR, ST. JOHN, N.B., FRIDAY, JANUARY 26, 1917

## Work of Canadian Engineers on Western Front



The accompanying is a sketch from a photo of a pontoon bridge constructed by Canadian Engineers on the western front. In no previous war have the engineers played such a prominent part as they are at present and though comparatively few in number as compared with the infantry, they are essential to the success of the army.

It is the engineers who provide roads and railways for the transport of the army and its supplies; they must also provide sanitary quarters and adequate protection from the enemy for the other branches of the service so that the power may be exerted to the fullest possible extent.

Existing roads and railroads may or may not be available. The progress of the campaign and strategic policies determine this, it being fundamentally important to move the army and its supplies by the shortest and quickest route to the place where they are required.

To do this new roads must be laid out and constructed in spite of existing natural obstacles. The commonest difficulty is the crossing of ravines, streams and rivers. Time is an all important factor and therefore the structures spanning these obstructions must be quickly erected and built of sufficient strength to transport whatever is required safely.

for an interruption at a critical period might easily prove disastrous.

Each case has its own solution and the engineers, knowing the material at hand, are required to solve the problem. They are provided with certain standard equipment and are trained to form this into permanent structures with great rapidity.

The construction of pontoon bridges is a work they are repeatedly called upon to undertake. A pontoon bridge is in every day language, a bridge built on boats or rafts of some sort capable of supporting the bridge and its loads. The service pontoon equipment consists of pontoons, trestles and superstructure carried on special wagons.

Each pontoon is carried on one wagon and consists of two sections, a bow piece and a stern piece which are each provided with special couplings for fastening

Are You Worn Out?  
Does night find you exhausted—nerves unsettled—too tired to rest?

## SCOTT'S EMULSION

is the food- tonic that corrects these troubles. Its pure cod liver oil is a cell-building food to purify and enrich the blood and nourish the nerve-centers. Your strength will respond to Scott's Emulsion—but see that you get SCOTT'S.

Scott & Bowne, Toronto, Ont.

them together safely and quickly. The complete pontoon is twenty-one feet long, five feet wide and two and one half feet deep.

The load to be carried regulates the spacing of the pontoons, and the strength of the superstructure which they are to support. The pontoons are secured in position in various ways, sometimes by cables from the shore, other times by anchors in the river or stream itself.

The maintenance of the structure is part of the duties of the engineers, who must protect it from any injury that would interrupt traffic. In the case of navigable rivers sections are constructed so that they can be swung or removed to allow the river traffic to proceed.

The recruiting office for the Canadian Engineers is at 91 Prince William street, where full information will be willingly furnished.

Willard H. Mitchell, of Lewiston, Me., who owns a cottage on Lake Auburn, found he was not taxed on the property and notified one of the assessors, who said he would send him a notice. The notice never came and now Mr. Mitchell discovers that the cottage is advertised to be sold for nonpayment of taxes.

## BRANCH PENSION OFFICES IN FIFTEEN CITIES

Ottawa, Jan. 25.—The pension commissioners for Canada issued the following statement tonight:

"The dominion government have appointed a board of pension commissioners for Canada with offices in Ottawa, as this board wish to cause as little delay as possible in dealing with communications with regard to pensions, directly with the board of pension commissioners, Ottawa.

"A great deal of delay may be caused by communications being sent through other departments of the government. The patriotic fund association and the military hospitals commission have kindly consented to give information and assistance to those wishing to write direct to the board of pension commissioners. These societies have offices in certain localities throughout Canada.

"In addition, in order to facilitate the granting of pensions, the board is opening branch pension offices in Vancouver, Calgary, Edmonton, Regina, Winnipeg, London, Hamilton, Toronto, Barrie, Kingston, Ottawa, Montreal, Quebec, St. John and Halifax. All information with regard to the pensions may be obtained from these offices."

I saw it hobbling down a flight of steps, slashed and torn to shreds. Barely enough was left to hold the shreds together. It was a pitiful sight. My curiosity was aroused.

"What are you?" I asked, "and how came you in such a horrible condition?"

"I am a reputation," the wreck replied, "and I have just been released from a female bridge whist party."

Life.

## HORLICK'S Malted Milk for Invalids

A nourishing and digestible diet. Contains rich milk and malted grain extract. A powder soluble in water.

## Redpath SUGAR



2 and 5 lb. Cartons—10, 20, 50 and 100 lb. Bags.

was a favorite name among the long-forgotten food products of half a century ago, just as it is among the live ones of to-day. Only exceptional quality can explain such permanent popularity.

"Let Redpath Sweeten it."

Made in one grade only—the highest!

## Variety of Uses.

The uses to which LEA & PERRINS' SAUCE can be put are innumerable. At Luncheon, Dinner or Supper, it is the ideal sauce for Roast Meat, Fish, Game, Cheese, Salad, etc.

In the Kitchen it is indispensable to the cook for flavoring Soups, Steaks, Gravies, Minced Meat, Baked Beans, etc.

In India, a favourite "Pick-me-up" is Lea & Perrins' Sauce with Soda-water.

Lea & Perrins  
The Original and Genuine  
WORCESTERSHIRE.

## SUBSTANTIAL PRICE REDUCTIONS

## FURS!

These twenty and twenty-five per cent. reductions will not be available much longer. Furthermore, fur prices will be much higher next season. Perhaps these items will be especially interesting to you:

- 1 only Hudson Seal Coat, Bust 40, Length 46, Shawl Collar, Fancy Lining. Regular \$215.00. For \$175.00
- 1 only Hudson Seal Coat, Bust 40, Length 46, Shawl Collar, Fancy Grey Lining. Regular \$210.00. For \$170.00
- 1 only Hudson Seal Coat, Bust 38, Length 40, Shawl Collar, Fancy Silk Lining. Regular \$185.00. For \$150.00
- 1 only Hudson Seal Coat, Bust 44, Length 48, Shawl Collar, Fancy Blue Lining. Regular \$215.00. For \$175.00
- 1 only Near Seal Coat, Bust 34, Length 42, Russian Rat Collar and Cuffs. Regular \$150.00. For \$120.00
- 1 only Near Seal Coat, Bust 36, Length 44, Shawl Collar, Satin Lined. Regular \$185.00. For \$150.00
- 1 only Persian Lamb Coat, Bust 38, Length 40, Shawl Collar. Regular \$185.00. For Half-Price
- 1 only Persian Lamb Coat, Bust 36, Length 38, Shawl Collar. Regular \$225.00. For Half-Price

H. MONT. JONES

92 King Street

St. John, N. B.

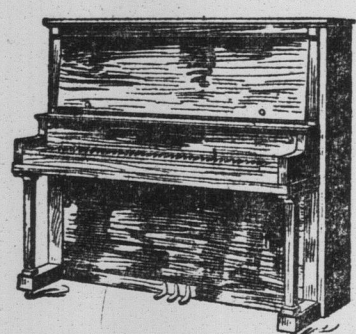
## G. B. CHOCOLATES

A few favorites—Corollas, Almondos, Almond Crispets, Neogatinas, Burnt Almonds, Maple Walnuts, Caramels, Cream Drops, Milk Chocolate Creams, Fruit Creams, etc. Display Cards with goods.

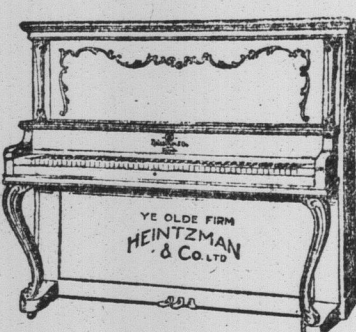
EMERY BROS. 82 Germain St.

Selling Agents for Ganong Bros. Ltd.

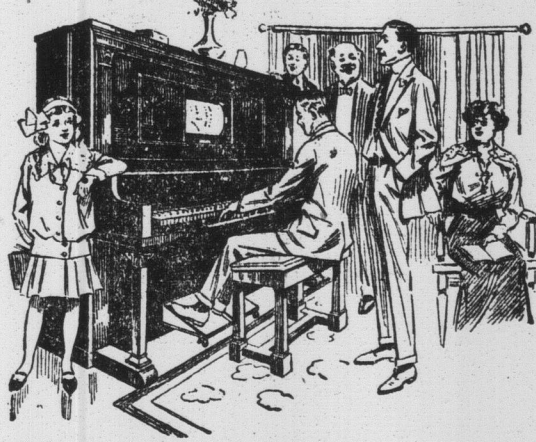
## BIG PIANO SALE



This high grade Piano, reg. \$375.00 Now \$289.00  
\$10.00 Cash, \$7.00 per month.



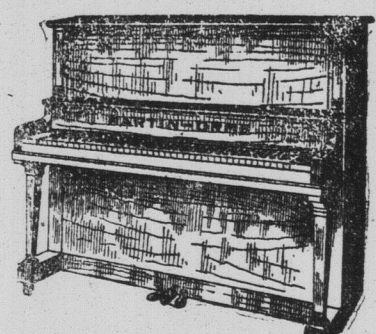
This \$500.00 Heintzman & Co. Piano. Now \$395  
\$20.00 Cash and \$10.00 per month

HEINTZMAN & CO.,  
MARTIN-ORME, KARN-MORRIS,  
WEBER & WORMWITH & CO.  
PIANOS AND PLAYERS

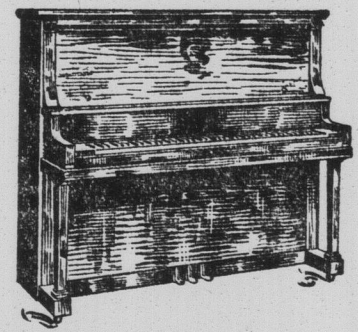
This Beautiful Heintzman & Co. Player.  
Regular Price \$850.00. Now \$700.00  
Easy Terms

Only the Pianos on our floor will be sold at these prices.

Don't miss this opportunity to purchase the best made pianos at greatly reduced prices.



This very highest grade Piano, reg. price \$475  
Now \$365, with Bench  
\$10.00 Cash and \$10.00 per month

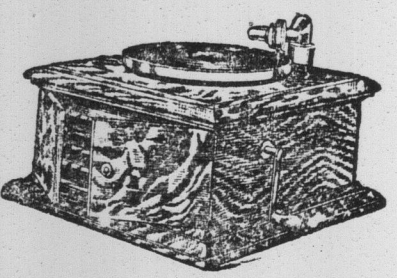


This lovely Piano, finest of mahogany finish, beautiful tone. Special \$298.00  
\$10.00 Cash and then \$1.75 per week

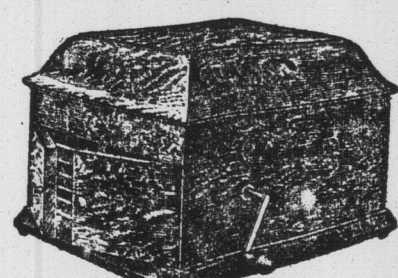
## ORGANS

20 Used Organs, 6 of which are Piano-Cased, to be sold from \$15.00 to \$55.00. Get First Choice. Easy Terms to Pay. Railway Fare allowed to out-of-town customers.

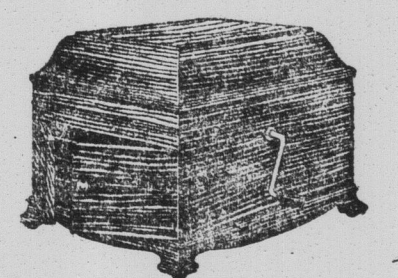
## VICTROLAS



This Victrola and 12 Selections \$42.40.  
\$10.00 cash and \$1.50 per week.



This Victrola and 10 Selections, \$76.40. \$15.00 Cash, balance \$2.00 per week.



This Gramophone and 12 Selections, \$35.00.  
\$10.00 Cash, balance \$2.00 per week.

THE C. H. TOWNSHEND PIANO CO.  
54 King Street St. John, N. B.