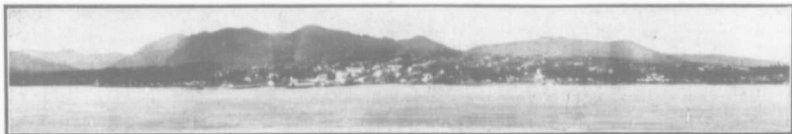


VANCOUVER, BRITISH COLUMBIA



PANORAMIC VIEW OF NORTH VANCOUVER

TRAMLINES The British Columbia Electric Railway Company owns and operates all the electric railways on the coast of this province. Its lines in Vancouver and suburbs are laid on 35½ miles of streets. Interurban lines connecting Chilliwack, New Westminster and Steveston with Vancouver have over one hundred miles of track.

The routes of these several branches are indicated on the maps accompanying this folder. As will be seen the journey between Vancouver and New Westminster can be made via three different routes, and a fifteen-minute service is maintained between the two cities.

The increase of the business of this company furnishes one of the many striking evidences of the remarkable growth of Vancouver and nearby communities. The company pays to the city a percentage of its receipts from passenger traffic over its Vancouver lines. The following table gives the payments made to the city in the years stated:

| | | | |
|--------|----------------|---------------|--------------|
| 1901-5 | ..\$20,626.69 | Avg per mo... | \$ 343.77 |
| 1906 | 10,163.38 | " " | ... 846.94 |
| 1907 | 16,366.96 | " " | ... 1,363.90 |
| 1908 | 23,182.43 | " " | ... 1,931.86 |
| 1909 | 33,694.80 | " " | ... 2,807.90 |
| 1910 | 47,419.75 | " " | ... 3,951.64 |

The city's income from this source for the half-year ended June 30, 1911, was \$23,227.93, an increase of nearly 50 per cent. on the sum received during the corresponding period of 1910, and more than the receipts for the whole of any year prior to 1909.

There were 30,016,692 passengers carried on the company's cars in the year 1910.

In a recent letter to the Vancouver City Council, General Manager Sperling, of the British Columbia Electric Railway Company, stated that the capital investments of the concern in various forms within the limits of the province had already reached a total of \$21,826,086, an amount which, when stated, was surprising to the greater part of the general public, who then for the first time realized the magnitude of the concern.

TELEPHONES The Vancouver telephone service is furnished by the B. C. Telephone Company, which operates in thirty cities and towns in the province, and owns many long-distance lines and submarine cables. It has 21,000 telephones in use and has invested about \$3,500,000 in its ventures. The capital of the company is held by British Columbia people exclusively.

The first exchange in Vancouver was opened in 1888 with less than 60 subscribers. Ten years later (in 1898) there were 1,000 odd. The second thousand was added in five years and the third in two years. Each of the next four years added 1,000, the total in 1909 being 7,200; but in the next year over 3,450 were added, and on June 30 last there were 12,836 instruments in use, an increase for the six months of 2,286.

This enormous rate of increase has made it necessary for the company to establish two additional exchanges. One was opened June 1, and the other will be opened in a few months.

As an instance of the progressiveness of the British Columbia Telephone Company, it may be pointed out that during the past twenty years it has three times thrown out of its central office in the city of Vancouver switchboards which the advance of invention had relegated to the scrap-heap. In 1891 the company was operating in Vancouver what were known as the fifty-line, standard, single-circuit switchboards. These were discarded in favor of standard metallic circuit switchboards. In time these gave place to branch terminal multiple switchboards, and then came the common battery type of boards which the company is today operating.

Despite the fact that the B. C. Telephone Company has invested millions of dollars in keeping its plant in the highest possible state of efficiency, the cost of service to subscribers is less than in many other places in Canada and the United States. The user in Vancouver pays less for service than does the man who rents an instrument from the government of Manitoba in the city of Winnipeg.