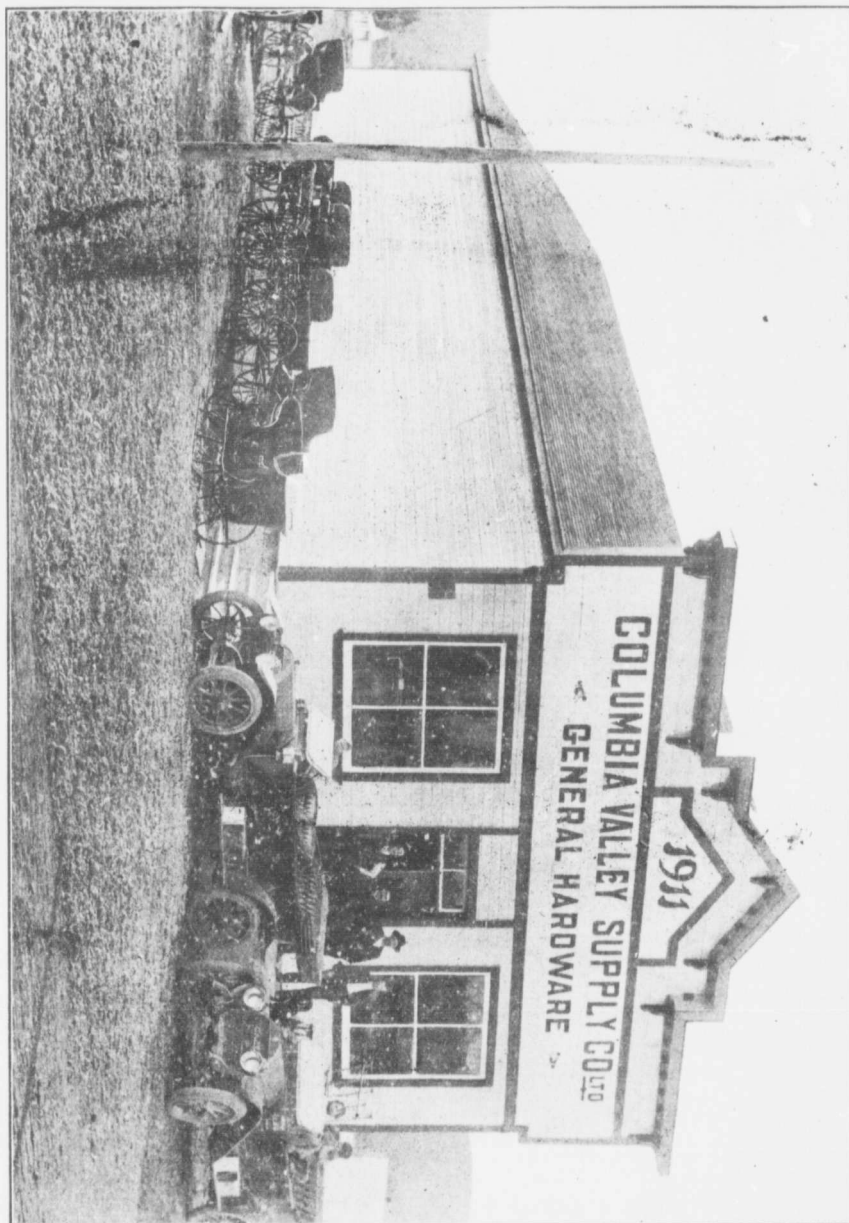


on every hand, while some of the older ones are being torn down to make room for more modern ones.

With the Rockies on the East, the Selkirks on the West, the Columbia River on the North and East boundary, and the beautiful Lake Windermere on the South, the



ATHALMER

panoramic view that is unfolded to the naked eye from Athalmer baffles description and must be seen to be appreciated.

Athalmer has well made streets, and plank walks.