

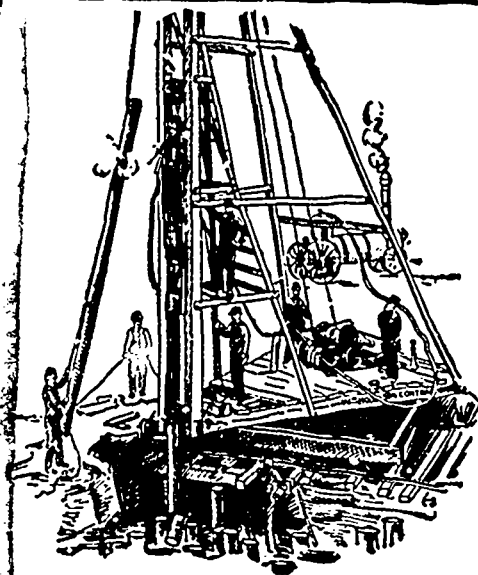
ALWAYS IN STOCK**PIG LEAD, PIG TIN AND SOLDER**

Syracuse Smelting Works, Montreal, P.Q.

ARTIFICIAL STONE PAVEMENTS**SIDEWALKS A SPECIALTY**

CORPORATIONS Will do well to consider our work and prices before letting contracts

The Silica Barutic Stone Company of Ontario, Limited.

WALTER MILLS
General Manager.Head office:
INGERSOLL, ONT.**PILE DRIVING**

on land or water by Steam Pile Driver or Drop Hammers.

**Portable Boilers
Hoisting Engines
Pumping Machinery**
TO LET

Bridge Building, Trestle Work, Wharves, Dams, Diving Submarine Work and General Contracting.

WM. HOOD & SON

10 Richmond Sq. - MONTREAL

PORTLAND CEMENT**Samson Brand****Magnet Brand****MADE AT SHALLOW LAKE, ONTARIO**

Our celebrated SAMSON BRAND has been before the public for many years, and has made hosts of friends among Contractors and Municipal Corporations until it has become one of the leading Cements on the market today, being excelled by none. This year we have decided to place the MAGNET on the market, and respectfully ask consumers to give it a trial. It will, we think, do its own advertising.

Correspondence invited.

GEO. S. KILBOURN, Secretary-Treasurer.**WORKS: Shallow Lake, Ont.****HEAD OFFICE: Owen Sound, Ont.****THE CANADIAN PORTLAND CEMENT COMPANY, LIMITED**Manufacture "**RATHBUN'S STAR**" Brand

The Leading Canadian Portland Cement.

Capacity of Works: 500,000 Barrels Per Year.

SALES AGENTS**the RATHBUN CO.**

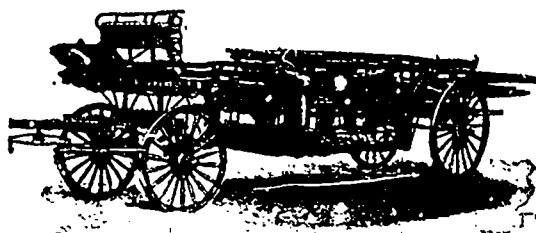
310-3 2 Front Street West, TORONTO, ONT.

St. Lawrence Portland Cement Co.

266 1/2 Notre Dame Street West, MONTREAL, QUE.

LIGHTNESS, STRENGTH AND ECONOMY

Seagrave Patent Trussed Ladders, Trussed Aerial, City Service and Village, Hook and Ladder Trucks, Combination Hook and Ladder Trucks and Chemical

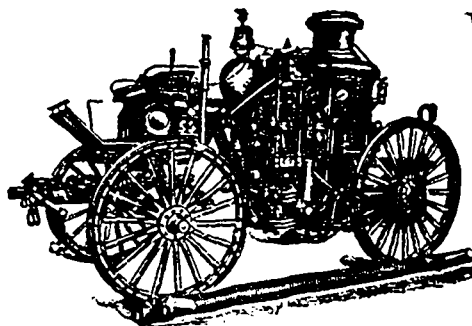


Engines, Trussed Trucks and Hand Pumps, Combination Hose Wagons and Chemical Engines, Hose Wagons, Combination Hook and Ladder Trucks and Hose Wagons, Chemical Engines, Fire Extinguishers, Hose Reels, Patrol Wagons, Ambulances, Specialty Wagons, Patent Sleigh Burners, and other Modern Fire Fighting Tools.

Prompt attention given all inquiries. All goods built to order.

Long Distance
Phones 686 and 684**W. E. SEAGRAVE, WALKERVILLE, ONT.****FIRE APPARATUS**

and

ROAD MACHINERY

FIRE ENGINES in five sizes, with a full line of fire-fighting goods

We Rebuild other makes of Fire Engines with our patent Boiler.

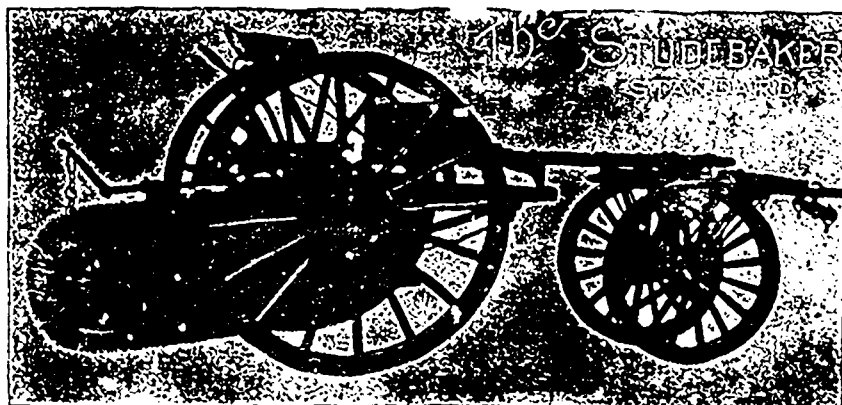
BRANTFORD PITTS DOUBLE ENGINE STEAM ROAD ROLLER

IN THREE SIZES—10, 12 and 15 ton.

CORRESPONDENCE SOLICITED.

WATEROUS, Brantford, Canada.

Hugh Cameron & Co., Selling Agents, 16 East Queen Street, Toronto

**Studebaker Sprinkler**

(PATENT IMPROVED.)

Does not clog or get out of order. Greatest width of spray Can be graded from driver's seat to any volume We also make an . . .

IMPROVED VERTICAL SPRAY

for Pavements

Geo. Heaman, Mfr., London, Ont.Stackpole
Patent Improved**Street Sweeping Machine**Is the Standard
of Perfection.

Because no sweeper so effectually does the work for which it is designed as "The Studebaker." It Sweeps Clean. No sweeper is constructed with the same degree of care and mechanical precision. It Wears Well. "The Studebaker" has the smallest possible number of working parts, and has less wear than any other sweeper made. It is free from all unnecessary complications. With reasonable care it does not get out of order. Send for complete descriptive catalogue