

Dodge Brothers Sedan--Type A - \$2280

Only material of the finest grade is used in the construction of this car. Drop Forgings and Vanadium Steel are used in all parts of Dodge Brothers Cars that are subject to stress and strain and continual wear. The value of this material is measured in extra years of satisfactory service.



Dodge Brothers Business Sedan - \$1890

The body is built entirely of steel. This construction gives the Sedan a sturdy firmness of body structure heretofore unknown. The rear compartment furnishings are removable, seat, side and back cushions, seat frame, foot rest and carpet, giving at a moment's notice a steel wall carrying compartment of 64 cubic feet. Upholstery, Genuine blue Spanish leather.

The Dodge Brothers Motor Car is The Best Car for This Country on the Market

And gives entire satisfaction to all owners. Ask any person who has ever driven a Dodge Brothers Car.

Why Experiment with any Car which is Unknown in this Country?

PRICES Of Dodge Brothers Cars

TOURING CAR	\$1400	PANEL SIDE BUS	\$1500
ROADSTER	1370	CHASSIS, No. 1	1140
SEDAN, (Type A)	2280	CHASSIS, No. 3	1200
BUSINESS SEDAN	1890	CHASSIS, No. 4	1230
COUPE	1570	ONE TON TRUCK	1940
SCREEN BODY BUS	1360	1 1/2 TON TRUCK	2030

These prices are delivered at Campbellton
All Taxes Paid.

We have never known a gear of a Dodge Brothers Car to break or need replacing. Considering the number of Dodge Brothers cars in this district our Campbellton service was unable to sell any parts, except two springs, last season. Some record!

Automobiles are not expensive, on the contrary, they are cheap. For a man that amounts to something an automobile costs less than NOTHING, since it doubles his value. And any man surely is worth more than the price of a first-class reasonable-priced automobile in these days.

We have been authorized to accept a few used cars in exchange for new Dodge Brothers Cars.

SPECIFICATIONS

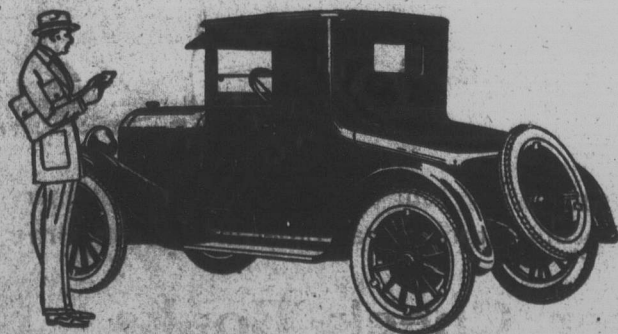
ENGINE—30-35 H. P., 2-point suspension, unit power plant, 4-cylinder "L" head, cylinders cast in block.
LUBRICATION—Engine by pump and splash feed, eccentric pump, driven by spiral gears from crankshaft. Chassis by high pressure grease gun.
COOLING—Water. Circulated by centrifugal pump. Tubular radiator.
CARBURETOR—Special design, automatic air valve type.
FUEL SYSTEM—Vacuum feed. Fuel tank at rear; capacity 15 gallons.
IGNITION—Distributor, automatic and manual spark control.
STARTER—12-volt single unit starter generator, 12-volt storage battery.
CLUTCH—Dry multiple disc; compound leverage, ball thrust release mechanism.
TRANSMISSION—Selective sliding gear type, three speeds forward and one reverse, two angular ball bearings. All gears chrome vanadium steel, heat-treated and hardened.
REAR AXLE—Semi-floating spiral bevel gear type. Four bevel gear differential. Chrome vanadium steel gears, heat-treated and hardened.
SPRINGS—Chrome vanadium steel. Front, semi-elliptic; rear, three-quarter elliptic.
STEERING GEAR—Chrome vanadium steel worm and worm wheel.
CONTROL—Levers in center of car, mounted on transmission case. Control lever on ball pivot with locking device for each speed.
INSTRUMENT BOARD—60-mile speedometer. Oil pressure gauge. Locking ignition and lighting switch. Ammeter. Carburetor air adjustment. Instrument board lamp with adjustable shade.
BODIES—Sedan, 4 door, five passenger; Business Coupe, two passenger; Touring Car, five passenger; Roadster, two passenger; Business Delivery. Upholstery, Genuine leather.
WHEELBASE—114 inches.
WHEELS AND TIRES—Wood with steel felloes. Tires, 22x4 Cord.
WINDSHIELD—Clear vision, ventilating type. Windshield cleaner.
EQUIPMENT—Electric horn, with button on steering wheel, license brackets, tire pump, high-pressure grease gun, jack, tool kit, tire carrier with demountable rim.

For Further Information
write or call at

Dodge Brothers Approved Service
Station, Campbellton.

S. W. Dimock,
Dealer for Restigouche.

C. Gordon Anslow,
Dealer for Bonaventure and Gaspe.

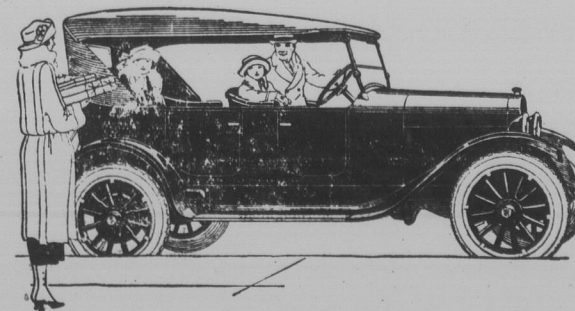


Dodge Brothers Business Coupe - \$1570

The moment this car is seen it is realized how perfectly it fulfills a real need. It is absolutely rumble proof. The rear compartment will hold a steamer trunk and other luggage.

SALESMEN WANTED
Representatives in every district to sell these cars. Apply at once to

S. W. DIMOCK or
C. GORDON ANSLOW



Dodge Brothers Five Passenger Touring - \$1400

The appearance of Dodge Brothers car is enhanced by a lustrous finish of baked enamel, lasting through years of service. Only an all-metal body of high grade pressed steel lends itself to enameling process. This permanent lustrous finish is distinctly a Dodge Brothers feature.

PLEASE POST UP FOR FUTURE REFERENCE