

Barn Roofing

**Fire, Lightning
Rust and Storm
Proof**

DURABLE and ORNAMENTAL

Let us know the size of any roof you are thinking of covering and we will make you an interesting offer.

Metallic Roofing Co.

Limited
MANUFACTURERS
TORONTO and WINNIPEG
45A

WESTERN CANADA FACTORY
797 Notre Dame Ave., Winnipeg.

ONTARIO LADIES' COLLEGE

(Trafalgar Castle)
WHITBY, ONT.
CANADA.

Opens Sept. 8th, 1910

PERFECT SURROUNDINGS

FULL COURSES IN

Literature Elocution
Music Fine Arts
Household Science, etc.

Splendid organization. Rates moderate.

WRITE THE PRINCIPAL FOR CALENDAR

REV. J. J. HARE, Ph.D.
Whitby, Ont.

STUDY AT HOME

FARM BOOKKEEPING

The only Strictly Farmers' Course
Farm Business from Start to Finish

F. E. WERRY'S SCHOOL OF FARM ACCOUNTING

Brandon Manitoba

A REAL EDUCATION

for its students, with mental, spiritual, and physical development, in an ideal home environment—with thorough instruction, and agreeable social relations, is the purpose of Alma College. Your daughter will enjoy life here, because

ALMA COLLEGE

is attractive in situation, with ample grounds. Good food, home cooked. Rational exercise. Classics, art, music, domestic science, commercial, elocution and physical culture. Tuition low. Picked faculty. Address the president, Robt. I. Warner, M.A., D.D., St. Thomas, Ontario, for prospectus and terms. 11

Watches that Keep time

In buying a watch here you run no risk, for our watches are fully guaranteed by the makers; besides, we stand back of them with our guarantee to refund money if they do not prove satisfactory. At \$10 postpaid, this is the best watch ever offered in the West—a 15-jewel "Ressor Special" movement, an accurate and reliable timekeeper, in a solid nickel, solid back, dust proof case; the same movement in 20-year, gold-filled case, \$14.00.

D. A. REESOR

"The Jeweler"

Issuer of Marriage Licenses.

BRANDON, Man.

Seed Selection on the Farm

FOLLOWING is an address prepared by Seager Wheeler for the Canadian Seed Growers' Association session at the Saskatchewan Provincial convention of agricultural societies at Regina last January:

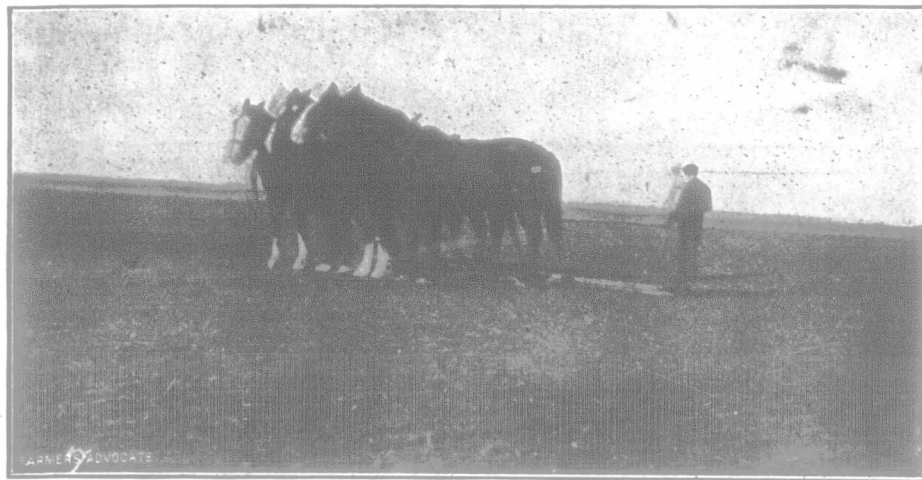
A few years ago I realized the necessity of sowing only the plump and best seed wheat grown on the farm, and it was not long before I saw the good results of this method. In cleaning my seed grain I always use a 8 x 8, or if necessary a No. 7 x 7 wire screen at the bottom of my fanning mill. In cleaning I always put my seed grain through the fanning mill three times, taking out all broken and small grains. In 1906 I obtained from summerfallow 50 bushels of wheat and from new breaking 48 bushels of wheat to the acre. I am satisfied that these good yields were the result of sowing only pure, clean and plump seed.

In 1905, I secured 5 pounds of Preston wheat from the Indian Head Experimental Farm, which I sowed on a piece of clean land. From this amount I obtained 30 pounds of good, clean wheat. I should have had more than this quantity but for cattle destroying it after it was stacked.

After cleaning I had 20 pounds to sow, which in 1906 was put on a piece of land that was planted to potatoes

are yields with the rest of the field, but the balance of the field went 35 bushel an acre. The grain from the seed plot was distinctly noticeable in regard to plumpness and even quality. At the time of cutting we had very high winds, playing havoc with the fields of grain, laying it all ways, so that we could not make a clean sheaf; but when I cut the seed plot it was a pleasure, as the straw stood up so well that I did not make a single ragged sheaf.

Now with regard to selecting my heads of wheat for next season's seed plot (1910). I start at one end of the plot and work to the other end, then working back the other way. The winds last season made the work difficult to select heads, so that off and on it took me three days to select three good bags full, which I find is sufficient. This amount when threshed should yield 25 to 30 pounds. I secure a little more than I need to allow for cleaning out any light grains so that when thoroughly cleaned I can secure 25 pounds of good, plump grain. I hang the sacks up in a dry shady place until I can find time later on to thresh them out with a stick on a hard floor. When threshed if there is any wind I pass it through the air from one pan to the other, taking out the chaff and broken heads; then put aside till a slack time when I can sieve out the rest of the broken heads and light grains. I would not trust to cleaning through a fanning mill, as there would be too much waste



FOUR HORSES PULL SIX HARROW-SECTIONS ON THE SUMMERFALLOW

the previous season. When threshed this plot yielded 25 bushels.

In the spring of 1908 I selected enough of the plump seed I had and sowed it on a special plot of one-fourth of an acre. I generally harrow my fields of grain as much as I possibly can each season when the grain is up 4 to 6 inches high, and this season in getting on the fields with the harrow I had to cross one corner of the seed plot six or eight times till I just about wiped out that corner of the plot. We were badly rusted out and a light frost on August 13th did not help it any. The seed plot suffered badly, except the corner that I had harrowed so severely, and the only good seed I obtained from the plot was from this corner.

Up to this time I had not selected any heads of wheat from my plot but I got some idea as to how to go to work. I had noticed that this Preston wheat was a mixed variety of red and white chaff. During the winter time I selected 10 pounds of the white chaff, and 25 pounds of the red chaff. I decided to select for the white chaff, but saved the 25 pounds of red chaff to sow for comparison. I now had a good foundation to start on. I had secured pure seed at least, free from other varieties and weed seeds.

Last spring (1909) I sowed the white chaff separately from the red chaff for comparison, on a piece of summerfallow. The balance of the field was sown with the same wheat, containing mixed types of red and white chaff. During the summer I noted the difference; the seed plot was fully 6 to 8 inches higher than the rest of the field, and more uniform in stand and height, and with slightly larger heads. During an absence from home we had a hot, dry spell and gophers cut fully one-third of the plot, before I could attend to them.

I had broken up my pasture close by and they cleaned out of this to my seed plot.

At threshing time I could not com-

For such a small amount of seed I consider it best to hand-pick out any white caps, etc., after putting through the sieves.

With regard to selection of type I find that at the outsides of the plot we find stray stools that have long, open heads which at first sight appear to be very large heads, but on comparing these with others in the centre of the plot they contain no more kernels than the rest. I therefore pass these by, selecting heads that contain not less than eight clusters on a side (some I find with ten and eleven) and with at least 4 or 5 kernels in a cluster. I look for a head that is square, close-jointed and evenly filled from bottom to top. It is surprising what different types one comes across. I have selected some in which it appears impossible for the cluster to set any closer together. Locking at them sideways they appear square. This is the type I am selecting, as much as possible a good, solid, even head. Up to the present I am not able to find all the heads exactly the same, but I fully believe that as each season comes for making my selection I shall be enabled to secure enough heads of a certain type, all uniform in regard to size, evenness and type.

With regard to selecting a stiff-strawed or rust-proof type I have not been able to do so as yet, but there are possibilities in the future for this work. I am content to go slow, building up a good foundation. I am as yet just on the first step of the ladder, but I am going to win out to the top if possible.

In treating for smut I have used formalin the last three seasons and I did not notice a single smut ball the past season. I always treat my seed whether clean or not. Prevention is better than cure.

There is a certain fascination in this work. Although it takes up a good deal of time at a busy time of harvest I consider we are amply repaid for our labor.

Be Thankful this is Not Your Home

But are you not really foolish to take chances? Answer for yourself. If the lightning strikes, your home goes. And your hopes go with it.

**MAKE
YOUR
HOME
SAFE**



You may now have absolute protection for your home and family by Prof. West Dodd's system for lightning control.

Prof. Dodd's Life Work

has been the control of lightning. 2000 fire insurance companies endorse him. They admit that his system does away with three-fourths of their annual losses. They urge you to protect your buildings by the D & S system of lightning rods, granting reduced insurance rates to induce you to do so. Write for Free Book. Full of facts. Tells all about the Dodd System, the Dodd Thunderstorm, the Dodd guarantee. Why you are safe and how you know you are safe. Costs but a penny for a card to write. Do it now.

Dodd & Struthers
453 Sixth Avenue.
Des Moines, Iowa.

Robin Hood Flour IS DIFFERENT

B. P. RICHARDSON

BARRISTER, SOLICITOR,
NOTARY PUBLIC.
GRENFELL, SASK.

LANDS FOR SALE

T. M. Daly, K. C. R. W. McClure
W. M. Crichton E. A. Cohen

DALY, CRICHTON & McCLURE

Barristers and Solicitors
Office: CANADA LIFE BUILDING
WINNIPEG MANITOBA

CHURCH BELLS

CHIMES AND PEALS

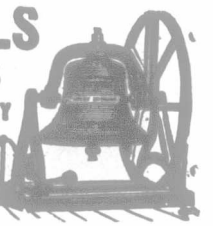
MEMORIAL BELLS A SPECIALTY

FULLY WARRANTED

McSHANE BELL FOUNDRY CO.,

BALTIMORE, Md., U. S. A.

Established 1866



HUDSON'S BAY COMPANY

LEASING OF LANDS

The company is prepared to lease for hay and grazing purposes all reserved quarters or half sections. For particulars apply the Land Department, Hudson's Bay Company, Winnipeg.