

Depression—Plantation \$2 a Pound to Less

INDUSTRY'S FUTURE
Favorable Rate Decision and Good
Coops May Stimulate Greater Activity and Better Prices.

BOSTON COTTON GOODS
Result of Claffin Sale Next Week May
Have Far-reaching and Serious Effect.

NEW INVENTION
REDUCE TWINE PRICES
Machine Will Use Cheap
Flax Twine and All Tests
Have Proved Satisfactory
WILL PLACE STOCK

GRAIN BUYING
CROP ASSURANCE
Montreal Reports Both
Wholesale and Retail Trade
As Seasonably Dull
TORONTO TRADE FAIR

REDUCED FRUIT RATES
Decision of Commerce Commission Will
Permit Carriers of Tropical Fruits in
Many States.

GREATEST GRAIN
CROP IN HISTORY
Unusually Heavy Engage-
ment of Ocean Tonnage
To Export Wheat
POSITIONS BETTER

Oats Show Damaging Effect of Dry
Weather in Certain States but
Condition is Still Above the Ten
Year Average—Surplus Wheat
Shortage.

Price;
Want to Sell
ment
Why pay first
at will do as well?
The Want Ad
you want to buy—
the very deal you
and it succeeds. So
and a plainly
help you and save
until the thing you
ment for You to Adopt)

WEEK IN COTTON
Action of Master Spinners' Federation
to Curtail Operations Confirms
Early Rumors.

COUNTRY DAIRY BOARDS.
Vankleek Hill, Ont., July 10.
There were 1,287 boxes of cheese
boarded on the Vankleek Hill cheese
board to-day. All sold at 12 1/2 to 16
cents, with the exception of sixty
boxes. Six buyers present.

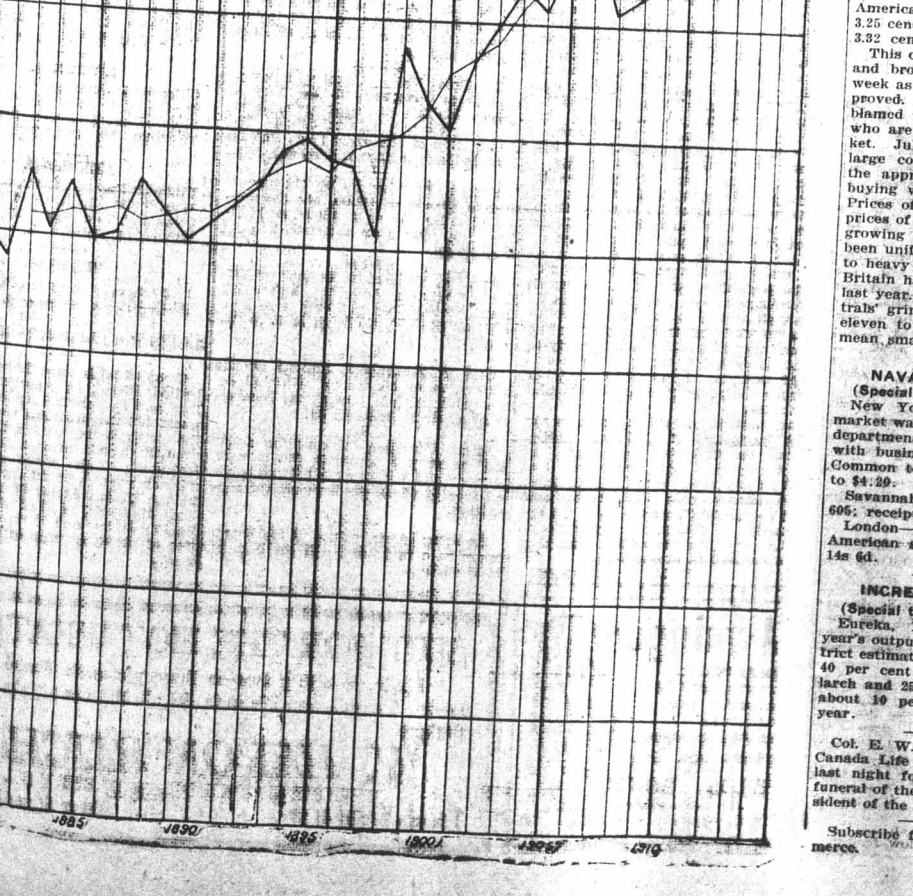
WORLD'S GRAIN SHIPMENTS.
Indian shipments. Bushels.
Wheat to U. K. 1,264,000
Argentine shipments.
Wheat to U. K. 160,000
Wheat to Cont. 127,296,442
Wheat to Nor. Europe 14,000
Corn to U. K. 1,352,000
Corn to Cont. 1,313,000
Oats to U. K. 83,000
Australian shipments.
Wheat to U. K. 232,000
Wheat to Cont. 32,800
Wheat to Nor. Europe 464,000

WEEK'S GRAIN MARKET
Throughout Week, Changes Were of
Small Proportions, But at First,
Tone Was Nervous.

CHARTER MARKET.
Full cargo steamers rates are somewhat
easier, due to a decided increase
in the offerings of tonnage for July
and August loading. Boats are in
short supply, particularly for grain
from Montreal, Baltimore and other
leading ports, but charterers are with-
holding some of their orders in the
hope of obtaining more favorable terms
than the basis of rates recently pre-
vailing. A limited business recently
reported in chartering, the greater part
of which was for grain carriers for
July and August loading. For sailing
vessels the market continues extremely
dull. Freight of all kinds are scarce
and, sparingly offered and rates
are nominal and quite unchanged.

LOCAL WHOLESALE PRO-
DUCE PRICES.
This Last Last
O Butter week week year.
O Cheese 12 1/2 12 1/2 12 1/2
O Eggs 23 23 23
O Potatoes 1.50 1.50 1.50
O Beans 1.95 1.95 1.95
O Flour, strong 5.10 5.10 5.10
O Bakers' 5.10 5.10 5.10
O Flour, winter 5.40 5.40 5.40
O Wheat No. 2 95 96 1.02
O No. 3 95 96 1.02
O Oats No. 2 44 44 41
O Hay No. 1 17.00 16.50 16.00
O No. 2 16.00 15.50 15.00
O No. 3 15.00 14.50 14.00
O Scrap feed 4.00 4.00 4.00
O Prof. live 8.40 8.40 7.25
O Hogs, live 7.75 7.75 10.25
O Sugar, No. 4 4.45 4.45 4.45
O Coffee, Rio 18 18 20 1/2

Only Exceeded Twice.
bushels of corn has been exceeded
twice in the final for the past
years. It compares favorably with
the five-year average of 2,708,000 bu-
shels from 1909 to 1913.
Spring wheat condition, although
loading 2 1/2 p.c. during June, indicates
275,000,000 bushels or 13,000,000 bush-
els more than on June 1.
Oats show the damaging effect of
dry conditions in certain States by a
loss of 1 p.c. in condition since June 1.
But the ten-year average, and the indica-
tions are for a crop that is the second
largest of record.
Farm revenue of wheat of 32,236,000
bushels are the smallest but one in
five years, indicating that out of last
year's large crop of 732,330,000 bush-
els growers have sold more closely than
usual. In total revenue of 72,236,000
bushels including the 6,000,000 bushels of
wheat, including the 6,000,000 bushels of
wheat, the country has not had a
year in which the total wheat crop has
half decade as on July 1, this year.



SUGAR MARKET STEADY
Market for Raw is Cleared Up
Brokers Expect Advance Next
Week—Position Better.

HELPED BY TONNAGE.
Manufacturers say they will not be
able to accurately gauge the situation
until after they see the effect of freight
rate decision of the industry. A favor-
able decision ought to stimulate buy-
ing considerably, even though such a
movement might prove temporary.

NAVAL STORE MARKETS.
New York, July 11.—Naval store
market was quiet and unchanged in all
departments. Turpentine spirits 49c.
Common to good strained rosin \$4.10
to \$4.20. Turpentine 46 1/2c. Sales
606; receipts 110; shipments 520.
London—Turpentine spirits 38s 1/2d.
Americas strained rosin 38s 3/4d. Pine
oil 6d.

INCREASED PRODUCTION.
Eureka, Montana, July 11.—The
year's output of lumber in Eureka dis-
trict estimated at 60,000 feet, which
is 40 per cent yellow pine, 35 per cent
larch and 25 per cent fir. Production
about 10 per cent greater than last
year.

CLASS
A Much Abused Word
Writers, particularly of advertising,
long for another word that will con-
vey the same impression, so they may
avoid the stigma of bromidion or
stale.

ESTABLISHED 1855
The Journal of Commerce
145 & 147
FRONT ST. TORONTO