

Shipping News

SHIPPING LOSSES.

In past 15 months 896 British vessels have been lost, of which 500 at least were destroyed by the enemy. 171 were sunk by submarines.

PAYING TITANIC CLAIMS.

White Star Line has deposited \$544,475 with New York Trust Co. for immediate distribution among 660 claimants for damages arising from loss of Titanic, sunk by an iceberg in April, 1812, with loss of nearly 1,600 lives.

A TRADE WAR AS WELL.

120 chambers of commerce throughout France have recently met to discuss plans to conquer foreign markets during and after the war. Great Britain and France are planning to devise ways to oppose Austrian and German industry and commerce both during and after the war.

MERCHANT TONNAGE.

Only 1,655 merchant ships of 1,670,610 total tonnage, were added to world's mercantile shipping last year, as against 3,165 vessels of 3,484,171 tonnage year before. In United Kingdom but 517 ships of 649,336 tons were built, against 1,294 ships of 1,722,154 tons the previous year.

ADMIRAL URGES RELIGIOUS REVIVAL.

"England still remains to be taken out of the stupor of self-satisfaction and complacency into which her flourishing condition has steeped her. Until she can be stirred out of this condition, until a religious revival takes place, just so long will the war continue," declares Vice-Admiral Sir David Beatty of the first British battle cruiser squadron.

P. & O. HEAD ON WAR.

London special quotes Baron Inchcape of Strathnavar, head of Peninsula and Oriental line and one of leading commercial and financial authorities of the United Kingdom, as saying that Germany was not only already beaten irretrievably, but that she knew it.

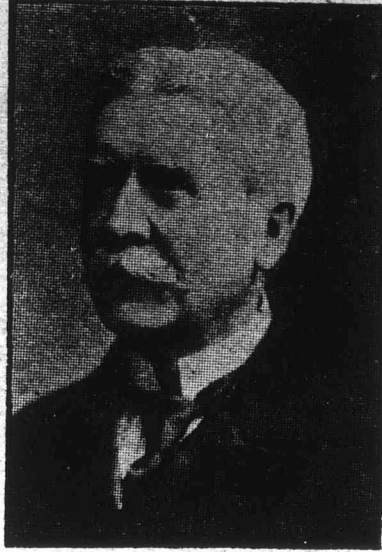
WHY SHIPPING COMPANY'S MAKE MONEY.

A still further improved basis for the expanding earnings of the International Mercantile Marine and other steamship lines is to be found in the recent advances in ocean freight rates. The steamship companies are in position to choose their own cargoes nowadays. The Cunard line is understood to be booked ahead for its Boston sailings until the first of May and to be refusing additional offerings until then.

Below we compare rates quoted to-day with those prevailing in November and in 1914, on shipments from Boston to Liverpool:

*Per 100 lbs.	November, June,		
	To-day	1915	1914
Grain, per bu.	\$0.42	\$0.40	\$0.04
Cotton	2.75	1.25	0.12
Provisions	1.25	0.90	0.23
Sack flour	0.80	0.70	0.12
Pail lard	1.31	0.96	0.28
Butter	1.50	1.22	0.34
Cheese	1.25	1.12	0.28
Oil cake	0.80	0.70	0.12
Apples, per bbl.	1.25	1.25	0.69
Tobacco	3.00	1.25	0.31
Hard lumber	1.10	0.70	0.17
Soft lumber	1.20	0.80	0.22

*Except for grain and apples.



MR. J. K. MACDONALD,
President of the Confederation Life Association.

Railway News

GRAND TRUNK RAILWAY SYSTEM.

Traffic earnings from January 15th to 21st, 1916:

1916	\$950,914
1915	795,830
Increase	\$155,084

ALASKA RAILROADS TO GO ON.

The United States House appropriations committee has recommended a continuation of the work on the Alaska railroad and has placed a \$2,000,000 appropriation for the work in the emergency bill.

THE RAILROAD SITUATION.

In view of gravity attached to nationwide movement for a basic workday of eight hours by 400,000 railway employes, a plan is under consideration to organize a general conference committee of railway managers in United States to enter into negotiations with representatives of four railroad brotherhoods on the proposed demands.

BRITISH PETROLEUM IMPORTS.

Imports of petroleum from United States into Great Britain last year reached the record total of 354,920,679 gallons, according to Petroleum Review. Total imports from all countries were approximately 475,000,000 gallons, against 460,000,000 in 1914, previous high record year.

These enormous shipments were made despite dislocation of overseas trade by the war.

The cutting off of Russian and Roumanian markets and retarding of trade with the Far East made England almost entirely dependent on the United States and Mexico.

The famous Lutine bells at Lloyds, which sounds the requiem of lost ships, was rung five times in a day one day this week, the record for one day.

Russian government is negotiating with the Pullman Co. for 10,000 freight cars.

CANADIAN PACIFIC

TRAIN SERVICE

ST. JOHNS, QUE.

From Windsor St. Station.

*8.25 a.m.	*9.25 a.m.	†4.10 p.m.
†5.45 p.m.	‡7.15 p.m.	*8.10 p.m.

SHERBROOKE—LENNOXVILLE.

*8.25 a.m.	†4.10 p.m.	‡7.15 p.m.
*Daily.	†Daily ex. Sun.	‡Ex. Sat.

TICKET OFFICES:

141-143 St. James Street. Phone Main 8125.
Windsor Hotel, Place Viger and Windsor St. Stations.

GRAND TRUNK RAILWAY SYSTEM

Winter Race Meeting MONTREAL TO OTTAWA AND RETURN

\$4.50

Going Jan. 31st.

Returning until Feb. 3rd, 1916.

THE DOUBLE TRACK ROUTE.

TORONTO—DETROIT—CHICAGO.

INTERNATIONAL LIMITED.

Canada's train of superior service.

LEAVE MONTREAL 10.15 A.M. DAILY.

Pullman Sleeping and Observation Cars and Parlor, Library and Dining Cars.

CITY
TICKET
OFFICES.

122 St. James St., Cor. St. Francois-
Xavier—Phone Main 6902.

Windsor Hotel "Uptown 1187"
Bonaventure Station "Main 8238"

C. P. R. HALF YEAR.

The Canadian Pacific Railway for the first half of its fiscal year shows gain of 19.1 per cent in gross and 50.6 in net over the corresponding period in 1914. The figures follow:

	1915.	1914.	Increase.
Gross	\$66,470,163	\$55,938,125	\$10,532,038
Exp.	36,845,976	36,264,549	581,427
Net	29,624,187	19,673,576	9,950,610

Gross earnings for the six months, as already noted, have been exceeded in two years in the company's history, but net earnings constitute a record. Figures for five years, gross and net, are:

Year.	Gross.	Net.
1915	\$66,470,163	\$29,624,187
1914	55,938,125	19,673,576
1913	75,286,162	27,211,436
1912	73,526,191	27,131,152
1911	62,566,365	24,470,247

In detail by months, since the opening of the current fiscal year, gross and net figures offer the following comparisons with a year ago:

Month.	Change		P.C.
	Gross.	in year.	
July	\$ 7,895,375	—\$ 2,586,596	24.2
August	8,801,451	— 1,116,312	11.3
September	10,273,165	— 480,974	4.5
October	13,443,214	4,160,285	44.8
November	12,705,673	5,261,711	70.7
December	12,705,673	5,261,711	159.4

Totals \$66,470,163 \$10,532,038 19.1

Month.	Change		P.C.
	Net.	in year.	
July	\$ 2,800,403	—\$ 978,042	25.9
August	3,442,314	79,157	2.4
September	4,745,300	378,252	8.7
October	6,579,434	3,258,105	98.1
November	6,354,413	3,710,340	140.3
December	5,702,321	3,502,797	159.4

Totals \$29,624,187 \$9,950,610 50.6
—Decrease.

RAILWAYS BUILDING IN ALBERTA.

During 1915 there were 326 miles of new railway constructed in Alberta or more than in all the other Western Provinces combined. The new mileage is credited to the various companies as follows:

Canadian Pacific Railway	22
Canadian Northern Railway	59
E., D. and B. C.	97
A. and G. W.	100
Central Canada Railway	48

Total 326

CANADIAN NORTHERN QUEBEC

Daily except Sunday 9.30 A. M. Buffet Parlor Cars.

SHAWINIGAN FALLS GRAND MERE

Via the Short Line

9.30 A. M. Daily except Sunday. 4.45 P. M. Daily except Sunday.

L'ÉPIPHANIE JOLIETTE

Via the Short Line

9.30 A. M. Daily. 4.45 P. M. Daily except Sunday.

5.30 P. M. Daily except Sunday.

For tickets, parlor car reservations, etc., apply to City Passenger Agent,
230 St. James St., Tel. Main 6570 or Depot Ticket Agent, St.
Catherine St. East Station, Tel. Lasalle 141.