

**GERMAN ALSEN,** at higher prices than competitors has again this year been awarded the most important contracts of the World because practical tests by leading Engineers proved its merit and relative economy. Note the following:

<b>MEXICO CITY</b>	1905-1906	<b>U.S. PHILIPPINE GOVMT. ORDER</b>	1905-1906
<b>NECAXA DAM</b> (shipping instructions so far 60,000 bbls.) approximate amount	120,000 bbls.	<b>GOVMT. ORDER SOUTH AMERICA</b>	40,000 bbls.
<b>XOCHIMILCO WATER WKS., MEX.</b> approximate	175,000 bbls.	<b>RIO DE JANEIRO, SANTO, ETC.</b>	150,000 bbls.
- Also enormous quantities for the <b>PACIFIC COAST,</b>	200,000 bbls.	<b>AUSTRALIA, ENGLAND, SOUTH AFRICA, &amp;c.</b>	40,000 bbls.

There is always a certain trade who will pay for the best. We also make American Alsen, the highest grade of domestic Portland cement.


**CEMENT** 45 BROADWAY, NEW YORK CITY **CEMENT**  
We protect our customers!

## FIRE ESCAPES

**Wire Screens for Road Making**

Wrought Iron and Wire Guards and Enclosures for Jails, Asylums, Etc.

**The Geo. B. Meadows, Toronto Wire, Iron & Brass Works Company**  
67 Wellington Place, TORONTO Limited



*The* **Cadwell Silex Stone Co.**

## SILEX STONE WALKS

SILEX STONE CURBING AND BASEMENT FLOORS

*19 Years In The Business*

C. W. CADWELL, Manager. P.O. Box 117, Windsor, Ontario

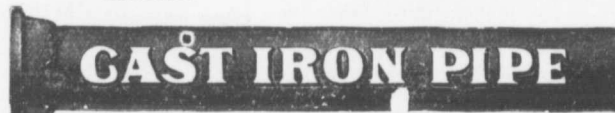
CORRESPONDENCE SOLICITED FROM MUNICIPAL CORPORATIONS.

JAMES THOMSON, President. J. G. ALLAN, Vice-President. JAMES. A. THOMSON, Secretary. ALEX. L. CARTSHORE, Treasurer.

## THE CARTSHORE-THOMSON PIPE & FOUNDRY CO. LIMITED.

Manufacturers of

Flexible and Flange Pipe,  
Special Castings and all kinds of  
Waterworks Supplies.

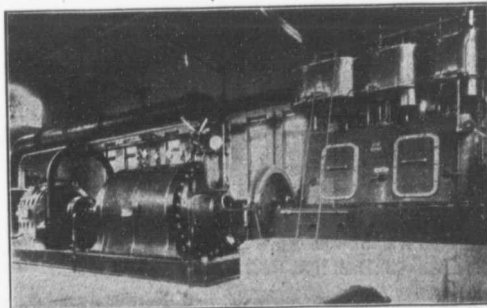


### CAST IRON PIPE

3 inches to 60 inches diameter.

for Water, Gas, Culvert and Sewer

~~~~~ HAMILTON. ONT. ~~~~~



Six Stage Turbine Pump Electric Motor and High Speed Steam Engine. Built for the Montreal Water and Power Co., to do 450 imperial gallons a minute against 300 feet head. Overall Eff. 70 per cent.

## PATENT TURBINE PUMPS

KORTUNG TWO CYCLE GAS ENGINES,  
GRAVITY AND PRESSURE FILTERS,  
WATER SOFTENING APPARATUS,  
ELECTRICAL MACHINES.

- BUILT BY -

**MATHER & PLATT, LIMITED**  
MANCHESTER, ENG.

CANADIAN AGENTS:-

**Drummond, McGill & Co., Montreal**