



Fig. 8. The edible portion of a cauliflower cut in two with a sterilized knife and inoculated with a pure culture of *B. oleraceae* by means of a single needle prick in the centre of the flower. Note the blackened portion which was softened to a considerable depth and also the water drops upon the blackened area.

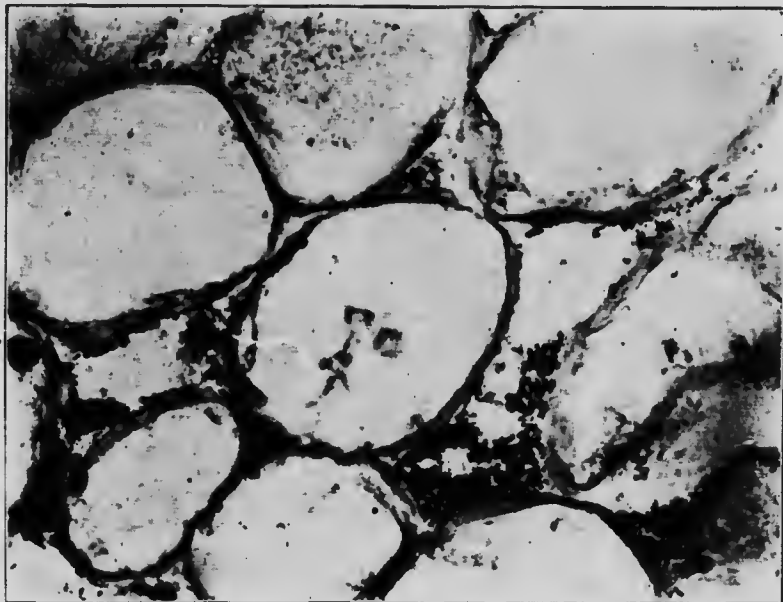


Fig. 9. Cross section of part of the petiole of a diseased cauliflower inoculated with a pure culture of *B. oleraceae*. Note the bacteria in the intercellular spaces and their penetration along the middle lamella.