



Grad Portraits  
will be taken at  
280 SUB  
on  
January 11 -  
February 5, 1982

For further  
information  
contact

Students' Union General Office

432-4236

259 SUB

ASSOCIATED FILM SERVICES LTD.

## EDMONTON TRAVEL

is back  
to regular hours

9:00 AM - 5:00 PM

✓  
*Please come and see us*

433-2494

EDMONTON TRAVEL



Give the newest  
and the best



Give the gift  
of music.

Rough Trade -  
(for those who think young)

**ROUGH TRADE**

Meat Loaf -  
Dead Ringer

**\$4.99**



Elvis Costello -  
Almost Blue

Bruce  
Cockburn  
Inner City Front

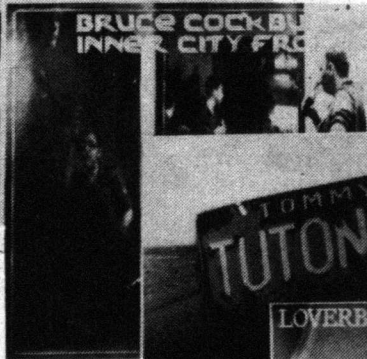
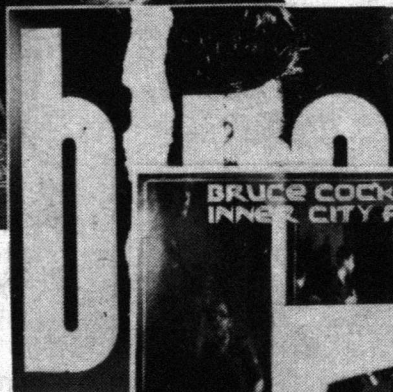
Tommy Tutone -

Loverboy



Straight Lines -  
Run For Cover

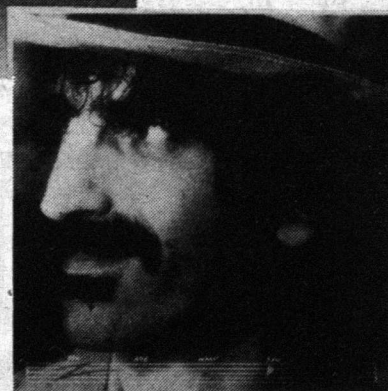
**\$3.99**



Frank Zappa -

You Are What You Is  
(2 LP set)

**\$8.99**



**HUB  
MALL**

**SALE DAYS - Thursday, Friday & Saturday**

Starting Nov. 29 . . . **OPEN SUNDAYS**

432-5024

*We've got it!*



### DAYSPRING FIRESIDES

Informal Worship

Singing,

Scripture,

Prayer)

Sundays: 7:30 p.m.

Dayspring

Presbyterian Church

11445 40th Ave.

Edmonton

Information: 435-3111 9 - 12 a.m.

## LSAT GMAT MCAT

INTENSIVE  
REVIEW  
SEMINARS

We offer for each of the LSAT,  
GMAT and MCAT:  
• 200 page copyrighted curriculum  
• 70 page Math Primer (sent to each  
LSAT & GMAT registrant)  
• seminar-sized classes  
• specialized instructors  
• Guarantee: repeat the course for no  
extra charge if your score is  
unsatisfactory

Why not give us a call and find out how  
you can really do the preparation you  
keep thinking you'll get around to on  
your own?

National Testing Centre Inc.

call:  
(604) 689-9000