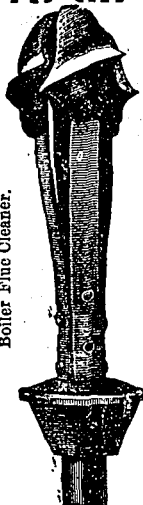
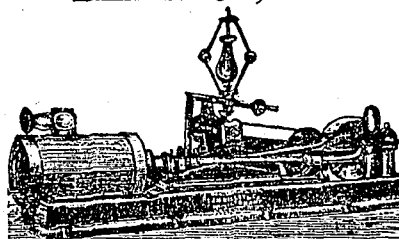


**A. M. FORSTER,**

Manufacturer of

Engineers' and Plumbers'  
**BRASS GOODS.**Vacuum Lubricator,  
Pat. Boiler Purger,  
Flue Cleaners,  
Portable  
Lawn Fountains  
All kinds of**BRASS CASTINGS.**173 & 175 James St. North,  
HAMILTON, Ont.

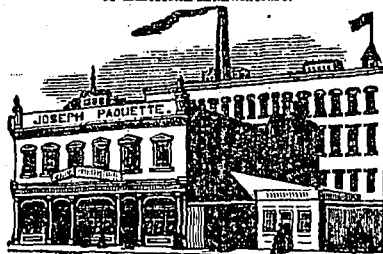
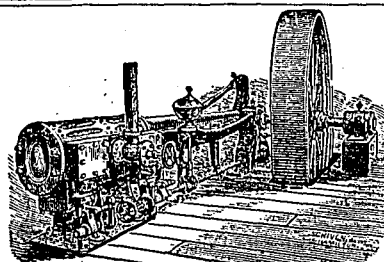
Boiler Flue Cleaner.

**J. H. KILLEY & CO.,**  
HAMILTON, Ont.

Builders of the most Simple, Economical and Modern of all CUT-OFF ENGINES. C. H. No. 1 Iron and Steel Boilers of all sizes in stock ready for delivery.

**JOSEPH PAQUETTE,**

Manufacturer of

Machine Knives, Grooving & Planing Knives,  
Paper, Leather, Cotton, Wool and Cork Knives,  
Of as Fine a Temper and Finished Edge as the best  
of American Manufacture.Also Manufacturer of Doors, Sashes, Blinds, Window Frames, Flooring, Wash-Boards, Moulds, etc.  
Office, 286 to 290 Craig St., (oppos. Viger Market), Factory, 12 to 22 PERTH ST.,  
**MONTREAL.****THOS. WORSWICK,**  
GUELPH, ONT.Manufacturer of the WORSWICK "BROWN" AUTOMATIC CUT-OFF ENGINE.  
For durability, accessibility of parts and economy of fuel, this engine has no equal. Boilers of Steel or Iron, made to order, Shafting, Pulleys, and Hangers furnished on short notice.**The Fensom Elevator Works,** 38 DUKE ST., Head of Frederick St  
Toronto.Manufacturers  
of**ELEVATORS**HAND, STEAM, AND HYDRAULIC, for light or heavy Work.  
In FACTORIES, HOTELS, WAREHOUSES, Etc.

Estimates furnished.

**THE CANADIAN PACIFIC RAILWAY CO'Y.**  
**LAND REGULATIONS.**

The Company offer lands within the Railway Belt along the main line, and in Southern Manitoba at prices ranging from

**\$2.50 PER ACRE**

upwards, with conditions requiring cultivation.

A rebate for cultivation of from \$1.25 to \$3.50 per acre, according to price paid for the land, allowed on certain conditions. The Company also offer Lands

**Without Condition of Settlement or Cultivation.****THE RESERVED SECTIONS**

along the Main Line, i.e., the odd numbered Sections within one mile of the Railway, are now offered for sale on advantageous terms, to parties prepared to undertake their immediate cultivation.

**TERMS OF PAYMENT:**

Purchasers may pay one-sixth in cash, and the balance in five annual instalments, with interest at SIX PER CENT. per annum, payable in advance.

Parties purchasing without conditions of cultivation, will receive a Deed of Conveyance at time of purchase, if payment is made in full.

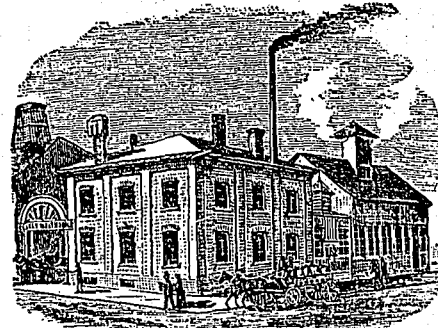
Payments may be made in LAND GRANT BONDS, which will be accepted at ten per cent. premium on their par value and accrued interest. These Bonds can be obtained on application at the Bank of Montreal, Montreal; or at any of its agencies.

FOR PRICES and CONDITIONS OF SALE and all information with respect to the purchase of Lands, apply to JOHN H. McTAVISH, Land Commissioner, Winnipeg.

By order of the Board.

**CHARLES DRINKWATER, Secretary.**

Montreal, December, 1883.

**W. CLARK,**Manufacturer of Canned Meats and Poultry, Cured Meats and Sausages,  
**MONTREAL.**

Factory: cor. Albert and Vinet Streets.

**JAMES PARK & SON,**  
PORK PACKERS, TorontoL. C. BACON, ROLLED SPICED BACON,  
C. C. BACON, GLASGOW BEEF HAMS,  
SUGAR CURED HAMS, DRIED BEEF,  
BREAKFAST BACON, SMOKED TONGUES,  
MESS PORK, PICKLED TONGUES,  
FAMILY OF NAVY PORK, LARD IN TUBS and PAILS.  
The best brands of English Fine Dairy Salt in stock.**ANTHONY FORCE,** IMPORTER  
OF

Steel Rails, Iron and Steel Bridges, Crucible Cast Steel Tires, Railway Equipment and Engineers' Supplies of all descriptions, Pig Iron, Bar and Sheet Iron and Steel, Wrought and Cast Iron Pipes, Boiler Tubes, Tin Plates, Cast Steel Bells for Churches, &amp;c., Lubricating and other Oils.

REPRESENTING IN CANADA:  
Vickers, Sons & Co. (Limited), Steel Manufacturers, Sheffield, Eng.; P. & W. MacLellan, Glutha Iron Works, Glasgow; George MacLellan & Co., India Rubber Works, Glasgow; Manhattan Oil Company, New York; James Watson & Co., Iron Merchants, Glasgow, Middlesbro', Swansea and Liverpool; John Russell & Co., (Limited), Alma Tube Works, Walsall.Office: 76 ST. PETER STREET,  
Warehouse: 225 Wellington St., Montreal.**I. J. MANSELL,**

Manufacturer of the

**"MANSELL" ORGAN.**

This instrument needs only to be seen to be appreciated. For sale by

**L. E. N. PRATTE, Montreal.**Send for circulars to the factory at  
**BROCKVILLE, ONT.****F. E. DIXON & CO.,**

MANUFACTURERS OF

**LEATHER BELTING,**

70 King Street East, Toronto.

LARGE DOUBLE DRIVING BELTS A SPECIALTY.  
Send for Price Lists and Discounts.**ALPHA IRON WORKS**LACOSTE & CO.  
53 Notre Dame  
East, Montreal.

RAILWAY SUPPLIES.—Manufacturers of Axles, Window Bolts, Door Handles, Hinges and Staples, Hinges of every description, Picks, &amp;c., &amp;c. Also Machinery of all kinds Bought and Sold.

**ASBESTOS.** IRWIN, HOPPER & CO.,  
Miners & Manfr's of

ASBESTOS, Asbestos Steam Rope Packing, Asbestos Wick Packing, Asbestos Millboard Packing, Asbestos Removable Steam Pipe Covering, Asbestos Cement, Asbestos Canvas Fibre, Crude Asbestos. Samples and prices on application. 60 ST. FRANCOIS XAVIER STREET, MONTREAL.