

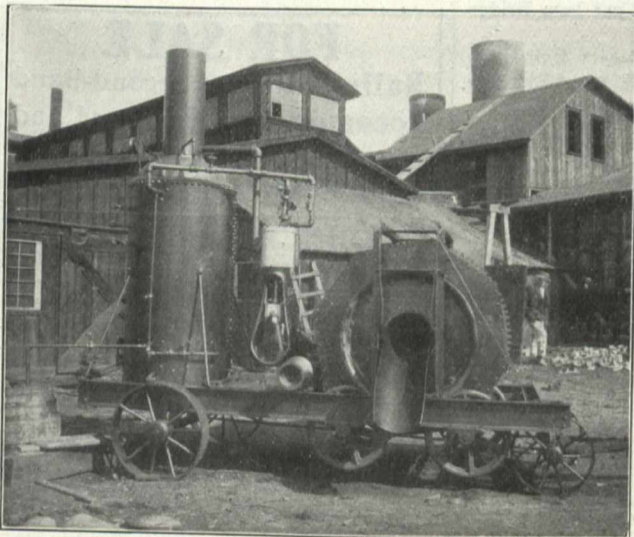
AMONG THE MANUFACTURERS

A department for the benefit of all readers to contain news from the manufacturer and inventor to the profession.

THE HADSEL MIXER.

At the cement show, which closed last Saturday night, the writer interviewed some of the exhibitors as to what they thought of the first show. The Rogers Supply Co., said: "We are highly pleased with the results to date and fully realize what the cement show meant to manufacturers of concrete mixers. We know that all the different mixers on the floor of the cement show were on trial by expert engineers, contractors and architects, and in exhibiting the Hadsel mixer we knew that our machine would be inspected closely, as it was the first appearance of the "Hadsel" in Canada, and we have good reasons to feel pleased on account of the favorable comments made about the strong features of the Hadsel mixer. You may ask any contractor or engineer who attended the show if he saw the Hadsel mixer and what he thought of it. Then, you will understand why we are pleased with the results of the show. One prominent engineer said: "The Hadsel mixer ought to last for an ordinary lifetime because the machine is so simple and strong that there is practically nothing to get out of order."

A strong feature is shown by the accompanying cut, which exhibits our drum supported on four 28-inch chilled



cast iron rollers geared on steel 1-inch beam. Also note large cast iron concave rim riveted to drum ends for drum to revolve on.

A well-known contractor said: "What I particularly like about the Hadsel mixer is that it is the nearest thing to a fool-proof machine that I have seen." Our half yard mixer is capable of discharging one yard per minute, this will give an idea of the value of the mixer for work where expedition is important. The mixer mixes thoroughly every particle of material which enters the drum.

MORE ORDERS FOR "ALLEN" RIVETERS.

There is a brisk demand for "Allen" portable pneumatic riveting machines, judging from sales reported recently by the sole manufacturer of these standard tools, John F. Allen, 370-372 Gerard Avenue, New York City.

Two riveters each have been sold to the Kelly Manufacturing Company, Waterloo, Ia.; Memphis Steel Construction Company, Memphis, Tenn., and Harlan & Hollingsworth Company, Wilmington, Del.

Orders for one riveter each have been received from the Corby Supply Company, St. Louis, Mo.; Dyer Brothers, San Francisco, Cal.; William Scaife & Sons, Oakmont, Pa.; American Steel Company, Matanzas, Cuba; Reliance Motor

Truck Company, Owosso, Mich.; Cananea, Yaqui River & Pacific R.R. Company, Senora, Mexico; Houston Structural Steel Company, Houston, Texas.

The orders from the Harland and Hollingsworth Company as the second "Allen" riveter sold them within a period of three weeks.

INDUSTRIAL TURBINE DEVELOPMENT.

The Portland Cement Company, of Portland, Colo., have purchased a 600 k.w. three-phase, 60 cycle Westinghouse turbo generator equipment, with a Le Blanc condenser, a rotary converter and a switchboard. These are to be installed as an addition to their present plant and serve rather as a gain in economy than in output. That will give an increased power capacity to be used on additional grinding machinery. The turbine and condenser are now being built by the Westinghouse Machine Company, and the electrical apparatus by the Westinghouse Electric and Manufacturing Company.

The installation of the Le Blanc condenser makes it possible to utilize for condenser purposes water from an old well which is not now usable with the present type of surface condenser. This will save the company a nice sum on their water supply reservoir and pipe lines.

It is interesting to note that turbines have been adopted in this plant for power extension, rather than Corliss engines, two of which have already been operating for a number of years on surface condensers. Fuel used is a southern Colorado bituminous coal of rather poor quality. With the moderate superheat and high vacuum contemplated, it will thus be possible for the turbine to effect considerable economy in operation. Although direct current is largely used at this plant, an alternating current turbine unit was selected in connection with a rotary converter as providing greater flexibility of operation than obtainable with a direct current turbine unit which was also under consideration.

THE D. P. BATTERY COMPANY, LTD., BAKEWELL.

To cope with their annually increasing output of Storage Batteries the company have reorganized and extended their works, already covering some five acres but preserving ten acres for future requirements, and situated amongst the healthful and delightful surroundings shown by the photographic view on the "D. P." Calendar, 1909. The additional large forming shop recently completed affords facilities for increasing their output by some quarter million of plates annually, which, with the large stock of over 20,000 plates of standard types will enable the company to give prompt delivery. A special feature in the works is their test room and laboratory in which a most careful supervision is exercised over the products in the various states of manufacture and in the analysis of all metal used. The guarantee the firm gives of workmanship and material is consequently substantial and effective.

Both in the home and foreign trade the firm's output has been a record in the past year of 1908, and from the increasing number of enquiries it is apparent that the general depression in trade is not seriously affecting the demand in this industry.

The Ontario Lime and Clay Company have been formed to work a lime, clay and cement proposition on the Mohawk Indian Reserve, Township of Tyenindaga, near Shannonsville, Ont. Hydrated lime will be their first product. The provisional board of directors include F. R. Lingham, L. E. Allen, C. I. White, and John W. Walker.