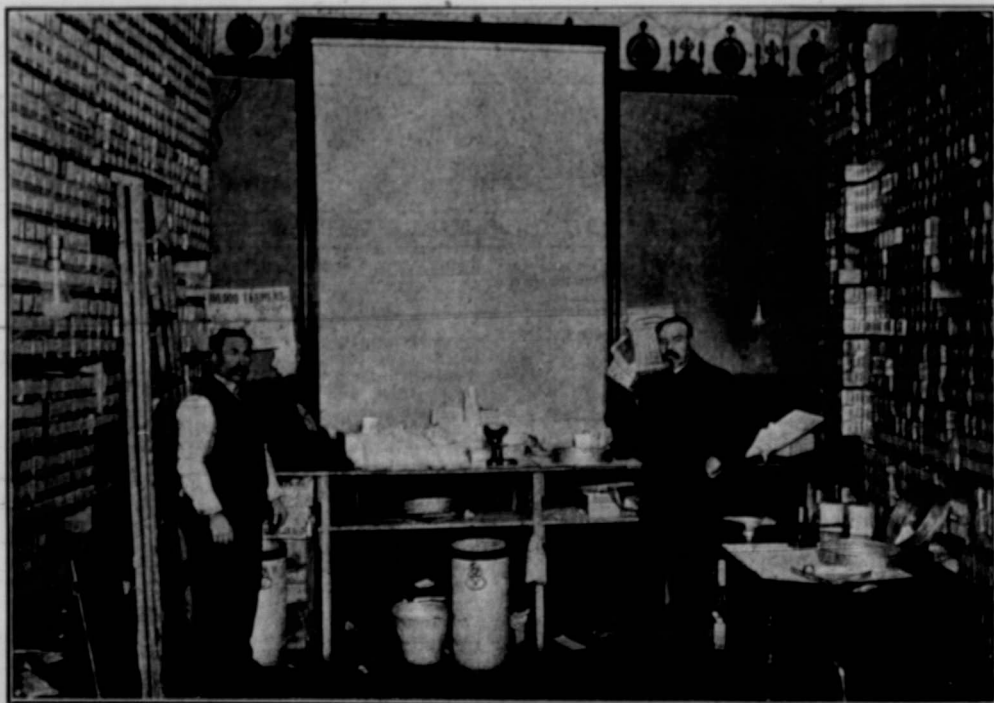


## Protection for Producers

**T**HE Sampling Bureau established by the Grain Growers' Association is one of the methods adopted to safeguard the interests of the grain growers in the shipment of their grain. So far, cars consigned to the order or advice of the Grain Growers' Grain Company are the only ones that have a duplicate sample secured from them, as the Grain Growers' Association has not yet been able to secure this privilege for cars consigned by farmers to their own order at Fort William or Port Arthur. Samplers are in the C.P.R. and C.N.R. yards night and day to meet trains on arrival, and they secure samples of grain at the same time as the samplers of the Government Inspection Department. These samples are taken to a sampling room in the office of the Grain Growers' Grain Company, where they are examined by Mr. James Massie, an experienced grain inspector, and graded and docked according to his judgment. When he gets the official inspection from the Chief Grain Inspector's office he compares it with his own, and if there is a difference an effort is made to have it adjusted.



Duplicate Sampling Bureau in Winnipeg secured through the representations of the Grain Growers' Association. James Massie, the Inspector, is standing on the right.

**T**HE securing of a duplicate sample, in the manner set forth above, enables the Grain Growers' Grain Company to establish the nucleus of a sample market. The Company has made arrangements with the large milling firms to have them send their representatives to examine the samples in the Grain Company's office every morning. Each representative selects the type of wheat that suits his purpose, and agrees to pay for it a premium of 1 cent per bushel over the highest price that can be secured for that wheat when sold, if the Grain Company can divert the car to the mill. This is a clear indication of the advantage that would accrue to farmers were a proper sample market established.

Another material advantage that accrues from the sample system is the check it has on mistakes or errors made by the samplers of the Inspection Department. In the past a good deal of doubt existed in the minds of the farmers as to the genuineness of many of the samples taken out of their cars. This doubt is now practically altogether removed.