

FARMER'S ADVOCATE

AND HOME JOURNAL

THE ONLY WEEKLY AGRICULTURAL PAPER IN WESTERN CANADA

REGISTERED IN ACCORDANCE WITH THE COPYRIGHT ACT OF 1875

November 11, 1908

WINNIPEG, MANITOBA

Vol. XLIV, No. 842



Roof for the Years to Come

Just one roof is GUARANTEED in writing to be good for 25 years and is really good for a hundred. That's a roof of

"OSHAWA" GALVANIZED STEEL SHINGLES

Put them on yourself—common sense and a hammer and snips does it. The building they cover is proof against lightning, fire, wind, rain and snow. They cost less because they're made better, and of better material. Write us and learn about ROOFING RIGHT. Address

The PEDLAR People (Est'd 1861).
Oshawa Montreal Ottawa Toronto London Winnipeg

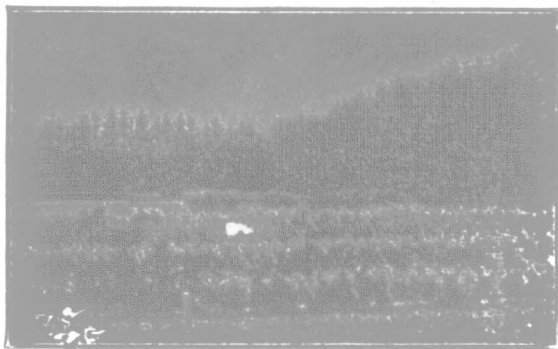
SHIP TO US YOUR FURS, SKINS & PELTRIES

We can assure you that we will at all times endeavor to please you with highest prices.
Write for our price list and shipping tags, which will be cheerfully furnished.

PIERCE FUR Co. Ltd.

230 King St., Winnipeg, Man.
REFERENCE—BANK OF NOVA SCOTIA

WE OFFER HARDY TREES



Grown for
Manitoba, Saskatchewan and Alberta
planting in varieties tested and recommended by Experimental Stations at
BRANDON and INDIAN HEAD

SALESMEN WANTED
to start NOW ON FALL SALES

Liberal Commissions
Pay Weekly

THE FONTHILL NURSERIES

OLDEST and LARGEST in CANADA
Established 1837 Over 800 acres

Stone and Wellington, - Toronto, Ont.

Barn Roofing

**Fire, Lightning
Rust and Storm Proof
Durable and
Ornamental**

Let us know the size of any roof you are thinking of covering and we will make you an interesting offer.

Metallic Roofing Co.
Limited
MANUFACTURERS
TORONTO and WINNIPEG

WESTERN CANADA FACTORY :
797 Notre Dame Ave. WINNIPEG, MAN.

British Columbia IRRIGATED FRUIT LANDS

WITH FREE WATER

Several hundred acres of the finest fruit lands in the world, now placed on sale. They are located in the famous Kettle Valley, and have been sub-divided into blocks of various sizes. Many of them front along the river and are beautifully situated. The soil is a rich sandy loam; it produces bumper crops of apples, small fruits and vegetables. A valuable local market is situated only a few miles away. It is located in the flourishing mining district of the Kootenay, where the monthly pay roll is \$250,000. The climate is magnificent. Location, about thirty miles east of Okanagan Valley. Excellent railway facilities. Abundant supply of the finest water; no rent to pay for it. Prices from \$100 to \$175 an acre. Write to-day for full particulars. Satisfy yourself as to the money to be made in this rich country.

D. R. TAIT, Secretary,
Kettle Valley Irrigated Fruit Lands Co
MIDWAY, B. C.

Winnipeg Agents:
ROBINSON & BLACK 381 Main Street

B. P. RICHARDSON
BARRISTER, SOLICITOR
NOTARY PUBLIC.

GRENFELL, SASK.
LANDS FOR SALE

Better
Butter comes
when

Windsor Dairy Salt

is used. It's so pure
and well-savoured.
At all grocers'.
185

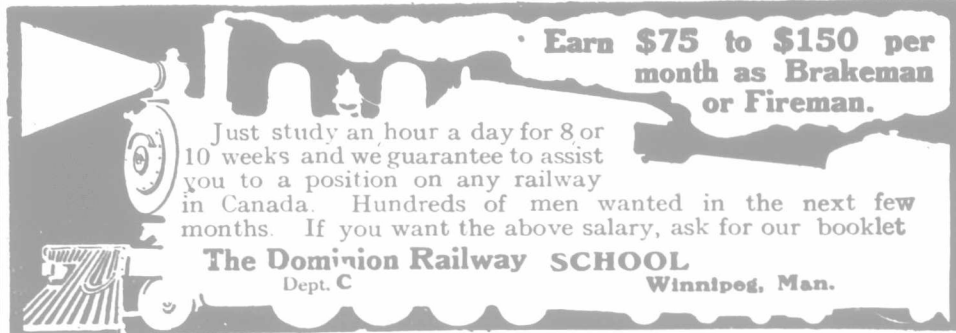
Advocate Ads. for Results

T. Mayne Daly, K.C. Roland W. McClure
W. Madeley Grichton E. A. Cohen

Daly, Grichton & McClure

Barristers and Solicitors

OFFICE—CANADA LIFE BUILDING
WINNIPEG MANITOBA



Earn \$75 to \$150 per month as Brakeman or Fireman.

Just study an hour a day for 8 or 10 weeks and we guarantee to assist you to a position on any railway in Canada. Hundreds of men wanted in the next few months. If you want the above salary, ask for our booklet

The Dominion Railway SCHOOL
Dept. C Winnipeg, Man.

JOHN McVICAR

301—McINTYRE BLOCK—301
WINNIPEG Phone 3351
P. O. Box 599

GRAIN COMMISSION AGENT

Ship your WHEAT, OATS, BARLEY and FLAX through one of the oldest established dealers and get best results. Write and send samples.

It Pays to Ship Your Grain to "A Strictly Commission Firm"

WRITE FOR PRICES AND SHIPPING DIRECTIONS

Thompson, Sons & Company

GRAIN COMMISSION MERCHANTS

703-B, GRAIN EXCHANGE, WINNIPEG