

# Northern Electric Farm Lighting Plant



—makes the Farmer's home more bright and cheerful, more convenient and pleasant; saves money, time, labor, for all the family; brings joy and contentment in the knowledge that anything the big City offers is now within your reach. It will make your home a real home, one that will be appreciated and admired in and beyond your family circle.



The NORTHERN ELECTRIC FARM LIGHTING PLANT does away with the use of dangerous matches and coal-oil lamps. It is sturdy and compact, simple in operation—a child can attend to it. It is so designed as to give maximum efficiency at a minimum cost.

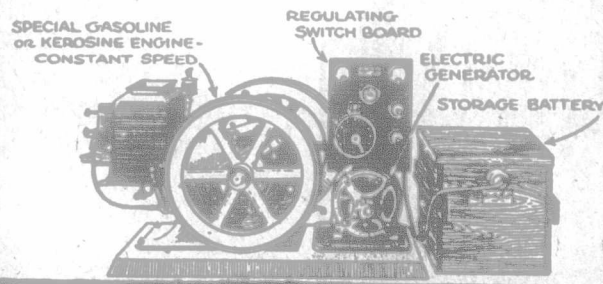
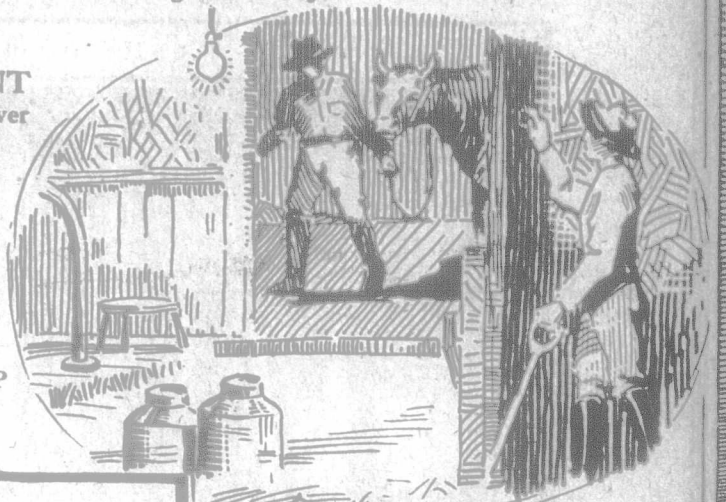
NORTHERN ELECTRIC LIGHTING PLANTS are made in various sizes for individual requirements. If you have your own gasoline engine, we can supply you with an electrical generating unit separate, or the Plant illustrated below which includes the engine.

Write our house nearest you for illustrated booklet and complete information which we will gladly forward free of charge and without obligation to buy.



*Northern Electric*  
FARM LIGHTING PLANT will provide electric light and power in ample capacity for

- THE FARM
- COUNTRY HOME
- COUNTRY STORE
- COUNTRY CHURCH
- TOWN HALL
- TOWN GARAGE
- COUNTRY HOTEL
- TOWN LODGE-ROOM
- RAILROAD and MINING CAMP
- RAILROAD STATION
- SUMMER CAMP



Coupon

To the  
*Northern Electric Company*  
LIMITED  
(Address nearest house)  
Please send me full particulars and illustrated literature of the Northern Electric Farm Lighting Plant. FREE.

NAME \_\_\_\_\_  
ADDRESS \_\_\_\_\_  
PROVINCE \_\_\_\_\_

## Northern Electric Company LIMITED

MAKERS OF THE NATION'S TELEPHONES

- |          |          |           |
|----------|----------|-----------|
| MONTREAL | TORONTO  | REGINA    |
| HALIFAX  | LONDON   | CALGARY   |
| OTTAWA   | WINNIPEG | VANCOUVER |