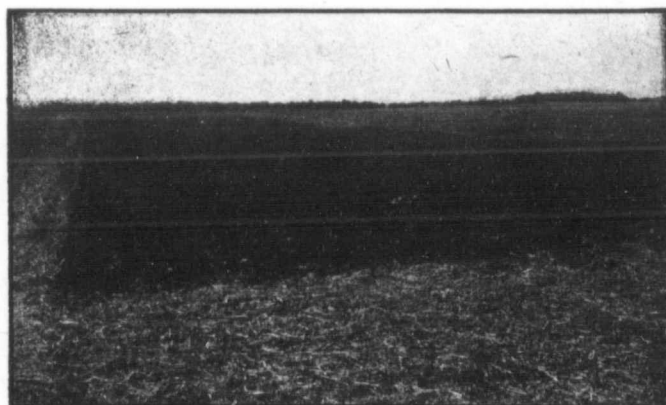




The Outfit that took First Prize. A Grand Detour 2 Bottom Rigid Beam Plow and a Case 10-18 Kerosene Tractor



This Shows part of the Field Plowed by the Outfit that Was Awarded First Prize. The Stubble Field Was Hard and Dry



The Outfit that took Second Prize. A Grand Detour 3 Bottom Rigid Beam Plow and a Case 15-27 Kerosene Tractor

CASE 10-18 Kerosene Tractor

For all kinds of drawbar and belt work. Specially designed 4-cylinder, valve-in-head, kerosene burning motor, mounted crosswise. One piece main frame assures permanent alignment of all gears, shafts and bearings. Cut steel gears enclosed and run in oil. Belt pulley mounted on crank shaft. Air washer prevents dirt from entering cylinders. All parts accessible. Write for all details.

CASE 15-27 Kerosene Tractor

Develops full power on kerosene with liberal reserve. Practical at the drawbar and belt. Four cylinder, valve-in-head motor mounted on one piece frame assures permanent alignment of all shafts, gears and bearings. Motor has removable cylinder walls. Cut steel spur gears, enclosed transmission. Air washer prolongs life of motor. Write for our Tractor Booklet.

CASE 22-40 Kerosene Tractor

Pulls 4 or 5 plows and is used for a multiplicity of other drawbar and belt jobs. The 4-cylinder, valve-in-head motor specially designed for tractor work burns kerosene economically. Transmission, all cut steel enclosed spur gears. Air washer keeps dirt out of cylinders. Every working part easily accessible. Let us tell you all the details. Write for literature.