

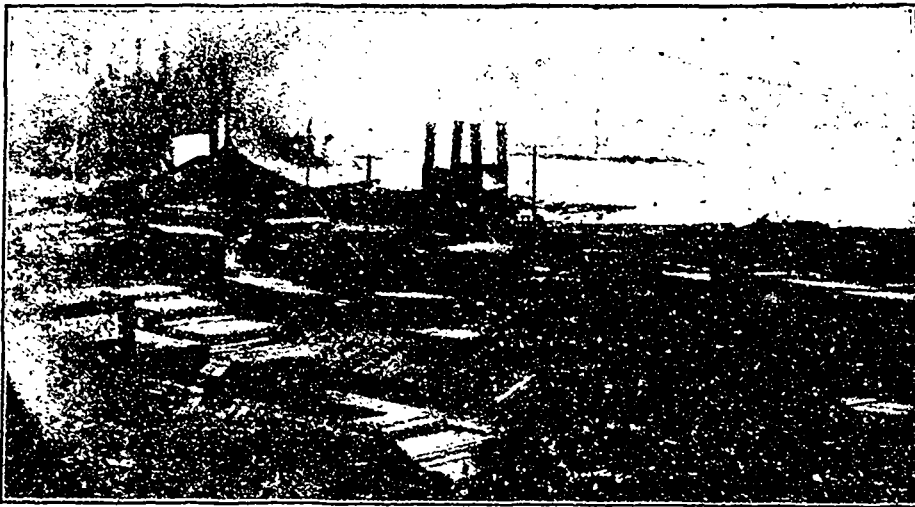
## BRITISH COLUMBIA SAW MILLS

Photographed and Described by Our Travelling Representative.

### THE NORTH STAR LUMBER COMPANY.

Among the larger mills of the west the business carried on by the Hanbury Manufacturing Company, of Brandon, Manitoba, takes a very prominent position. During the past few years the increased immigration to Manitoba and the Territories created an increasing demand for their manufactured lumber, necessitating the purchase of further limits and an increase in the mill capacity. With a view to enable them to be prepared for further demands upon their stocks, the company pur-

managers in British Columbia. Mr. Agnew, taking the advice of Horace Greely, the great American citizen, set out from his home in Brantford, Ontario, for the land of promise, Manitoba, just nine years ago. With exceptional pluck and desire for employment irrespective of the class of work offered, he immediately went to work as yardman with his present employers. Step by step he gained recognition and promotion for the faithfulness and ability displayed in his work, the culminating step arriving on March 7th, 1904, when Mr. Han-



SAW MILL OF THE YALE COLUMBIA LUMBER COMPANY, NAKUSP, B. C.

chased in September, 1903, the new mill of the North Star Lumber Company situated four miles east of Cranbrook, B. C., on the North Star branch of the Crows Nest Pass Railroad.

The property was generally overhauled, new machinery, including a new carriage, steam nigger, boiler and conveyors, being added, the capacity also being increased from 28,000 feet to 50,000 per day of ten hours.

The plant stands on a site of twenty-five acres away from any body of water, the company's limits of 7,000 acres of pine, fir and tamarac surrounding it on all sides. At the time of writing a planing mill is being built to take care of the output and prepare it for the market. It is to be thirty-two feet long by forty feet broad and will be equipped with three Goldie & McCulloch planers.

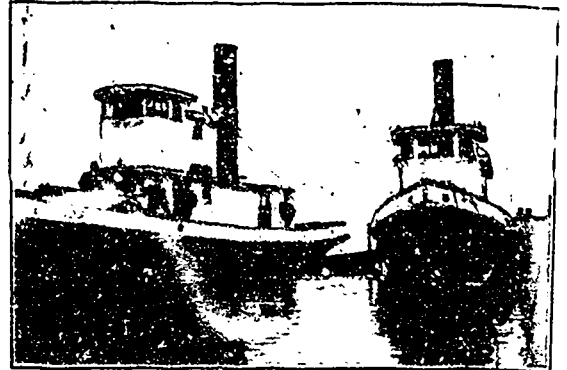
The principal timber cut by this firm is fir and pine, with a small proportion of tamarac. Most of the output is marketed in the Territories and Manitoba.

Mr. John Hanbury, the proprietor and general manager of the entire properties, is widely and favorably known to be a man possessed of great ability, his enterprise and shrewdness of management having proven great factors in the growth of the business during the past six years.

Mr. J. M. Agnew, the manager of the North Star mill just described, has had a remarkable career of success, and although as yet under thirty-two years of age, gives promise of developing into one of the brightest and ablest mill

owning mills at Nakusp, Robson and Cascade. Apart from the above three mills, Mr. Jos. Genelle, the manager, and Mr. Billings, the secretary, have just lately purchased the Kootenay River Lumber Company's mill at Nelson, running it in partnership as a separate concern.

The company own their own limits, possessing 65 square miles of fir, cedar, spruce,



TWO OF THE YALE COLUMBIA LUMBER CO.'S TUGS.

white pine and tamarac along the banks of the Columbia River and the upper and lower Arrow Lakes. The logs are towed to the mills by the company's tugs, these being three in number.

### THE NAKUSP MILL.

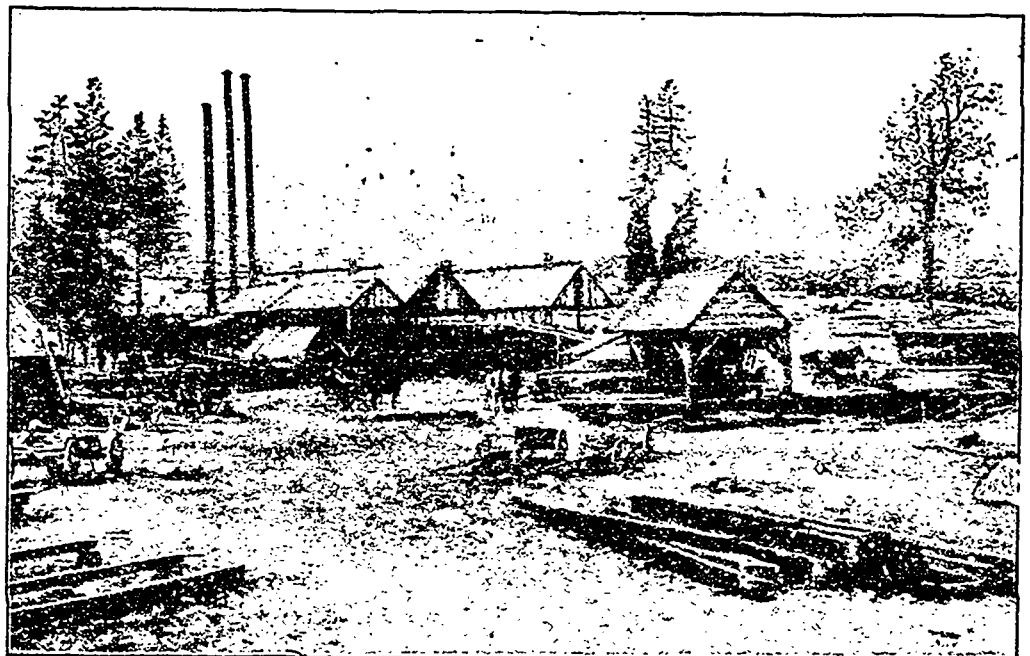
At Nakusp the company established their headquarters as far back as 1897. The plant, consisting of a saw and planing mill, occupies a site of 10 acres along the shores of the Upper Arrow Lake. It is splendidly situated and possesses connection with the main line of the C. P. R. by boat to Arrowhead, and the Crow's Nest Pass Railroad by a line from Nakusp to Roseberry, boat from Roseberry to Slocan City and thence by railroad to Nelson.

The mill is 30x130 feet in dimensions and is equipped with circular saw, edger, trimmer and the various other requisites of a first-class plant. The planing mill attached is equipped with four planers, surfer, matchers, sticker, band resaw and rip saw. The log deck is equipped with steam kickers, loaders and niggers, the carriages being worked by a steam feed.

Power for driving the machinery is obtain-

### THE YALE COLUMBIA LUMBER COMPANY.

The Yale Columbia Lumber Company, Limited, are among the largest operators in lumber in the interior of British Columbia,



SAW MILL OF THE NORTH STAR LUMBER COMPANY, CRANBROOK, B. C.