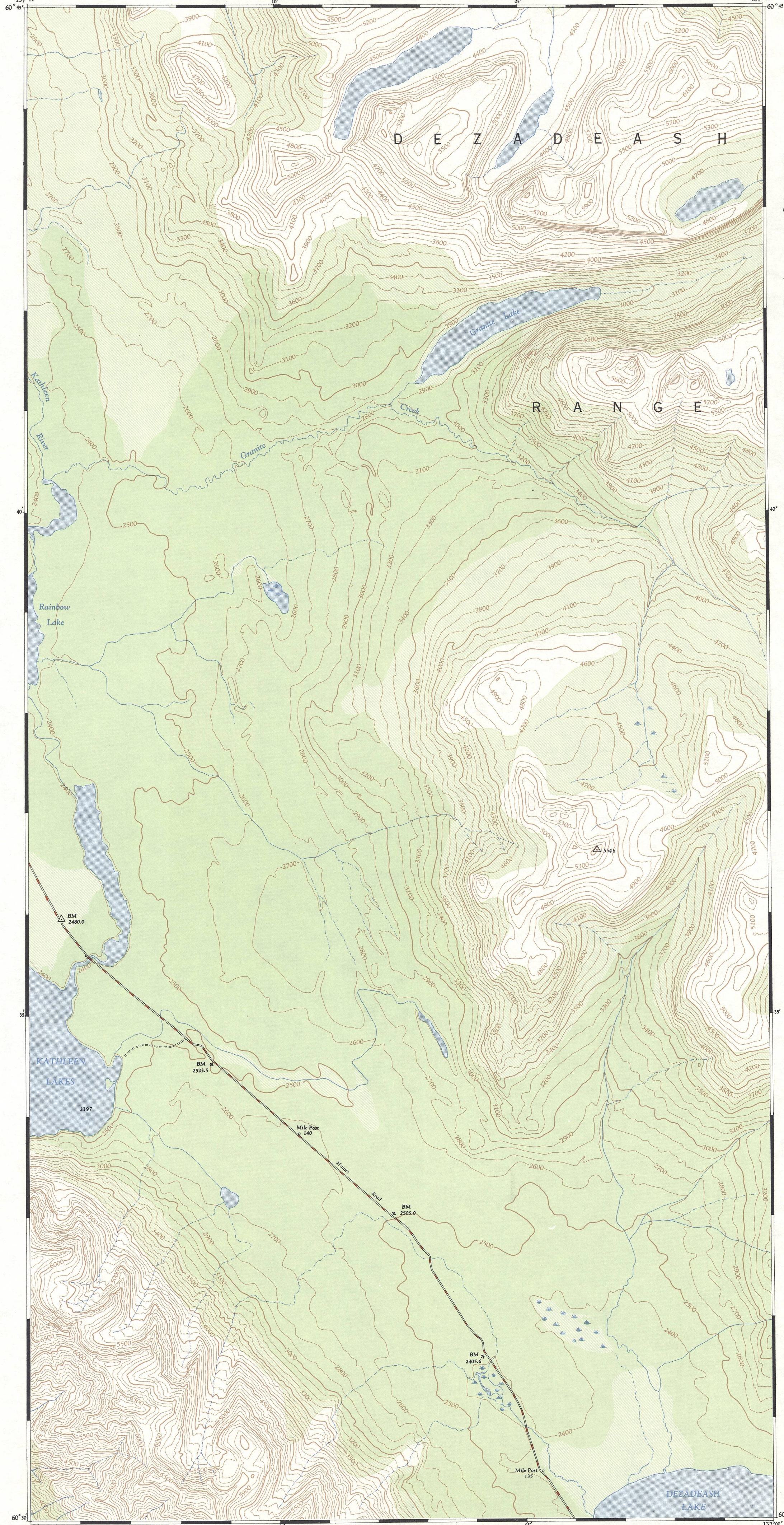




CANADA
DEPARTMENT OF NATIONAL DEFENCE
ARMY SURVEY ESTABLISHMENT

REFERENCE

- Roads:
hard surface, all weather... more than 2 lanes Part completed
hard surface, all weather... 2 lanes
loose surface, all weather... more than 2 lanes All weather
loose surface, less than 2 lanes All weather Dry weather
Cart Track, Footpath Trail Cart Track Footpath or Trail
Special, Snow Road, etc.
- Railways:
standard gauge, multiple track
standard gauge, single track
narrow gauge, multiple track
narrow gauge, single track
- Tramway
on Road
- Bridge, underpass or overpass
- Boundary, International
Province or State
County or District
Township, Seignior or Parish
City or Town
Reservation, Indian, Military, etc.
- Electric Power Line
on Steel Towers on Wood Poles
- Telephone, trunk route
- Triangulation Station
- Boundary Mon. Survey Mon.
- Bench Mark
- Spot Elevation, (in feet)
- House, Barn
- Buildings
- Mill or Factory, small, Saw Mill, etc.
- School
- Church
- Post Office
- Telephone Exchange
- Mine or Open Cut
- Cemetery or Churchyard
- Quarry
- Sand or Gravel Pit
- Cliff
- Cutting
- Embankment, Dump, etc.
- Lighthouse
- Wharf or Pier
- Foreshore Flats
- Swamp or Marsh
- Lake or Slough, intermittent
- Glacier or Snowfield
- Stream, intermittent
- Irrigation Canal, Ditches
- Inundated Land
- Contours, elevation
depression
approximate
- Relief, not indicated by Contours
- Wooded Areas, heavy
light



INDEX TO ADJOINING SHEETS

137° 00'	137° 15'
60° 45'	115 1/11 115 1/11 115 1/11
60° 30'	115 1/11 115 1/11 115 1/11

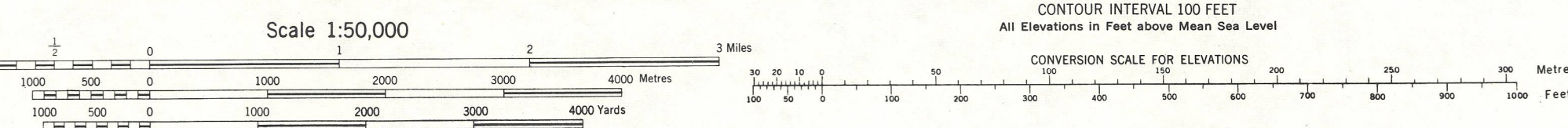
See "Index to Maps Available" for sheets published.

The general public may obtain copies of this map from the Map Distribution Office, Dept. of Mines and Technical Surveys, Ottawa, at 25 cents per copy.

KATHLEEN LAKES
YUKON TERRITORY
115 1/11 EAST HALF
FIRST EDITION

Surveyed, compiled, drawn and printed by the Army Survey Est. R.C.E. 1950-52, Aerial photography by the R.C.A.F. 1947.

MAGNETIC DECLINATION 31° 03' EAST AT CENTRE OF SHEET, 1952
Annual magnetic change 3.5 westerly



SUPERSEDED EDITION

McGILL UNIVERSITY
MAP COLLECTION
GEOGRAPHY DEPARTMENT
MONTREAL