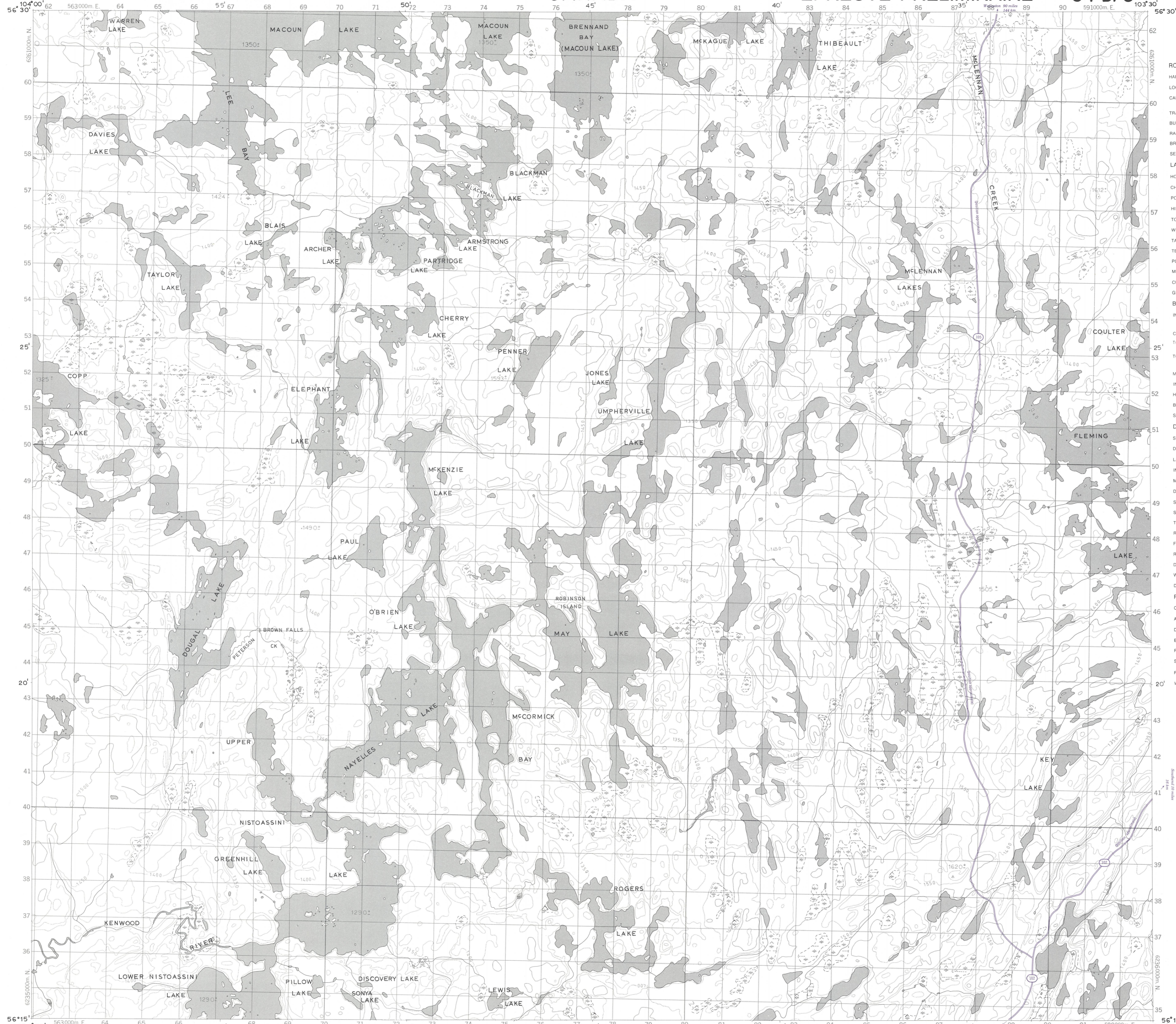
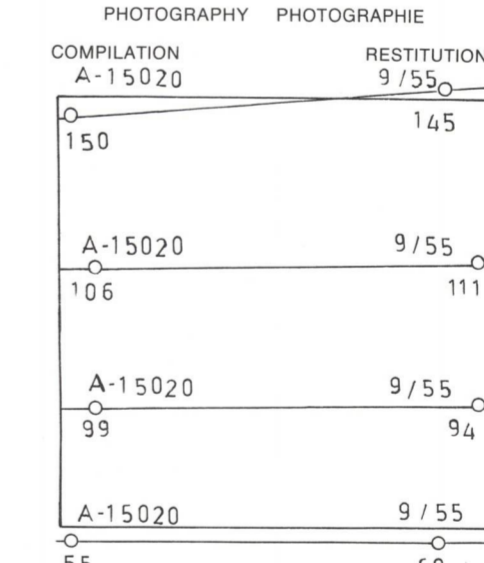


Military users, refer to this map as: Références de la carte pour usage militaire: SERIES A 701 SERIE MAP 64 D/5 CARTE ÉDITION 2 MCE ÉDITION

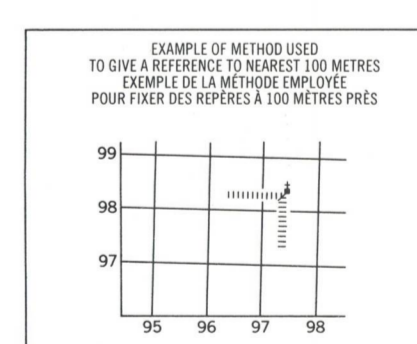
Military users, refer to this map as: Références de la carte pour usage militaire: SERIES A 701 SERIE MAP 64 D/5 CARTE ÉDITION 2 MCE ÉDITION



LEGEND - LÉGENDE. Table with two columns: English and French descriptions of map features, and their corresponding symbols. Categories include Roads and Related Features, Landmark Features, Boundaries and Control, Drainage and Related Features, Relief Features, and Photography.



GRID ZONE DESIGNATION / DÉSIGNATION DE LA ZONE DU QUADRILLAGE. Table with 2 columns: English and French labels for grid zones 13V and EN.



REFERENCE POINT / POINT DE RÉFÉRENCE. Table with 2 columns: English and French descriptions of the reference point, including coordinates and grid zone designations.

ONE THOUSAND METRE / UNIVERSAL TRANSVERSE MERCATOR GRID / ZONE 13 / QUADRILLAGE DE MILLE MÈTRES / UNIVERSAL TRANSVERSE DE MERCATOR

Produced by Surveys and Mapping Branch, Department of Energy, Mines and Resources, Ottawa, 1969 from photographs taken in 1955-56. COPIES MAY BE OBTAINED FROM THE CANADA MAP OFFICE, DEPARTMENT OF ENERGY, MINES AND RESOURCES, OTTAWA.

MAY LAKE SASKATCHEWAN. WEST OF SECOND MERIDIAN - WEST DU DEUXIÈME MÉRIDIEN. SCALE 1:50,000 ÉCHELLE 1.25 inches to 1 mile approximately. Includes a scale bar in miles and meters.

ÉTABLI PAR LA DIRECTION DES LEVÉS ET DE LA CARTOGRAPHIE, MINISTÈRE DE L'ÉNERGIE, DES MINES ET DES RESSOURCES, OTTAWA, EN 1969, D'APRÈS DES PHOTOGRAPHIES PRISES EN 1955-56. ÉQUIDISTANCE DES COURBES - 50 PIEDS. CÉS CARTES SONT EN VENTE AU BUREAU DES CARTES DU CANADA, MINISTÈRE DE L'ÉNERGIE, DES MINES ET DES RESSOURCES, OTTAWA.

CONVERSION SCALE FOR ELEVATIONS / ÉCHELLE DE CONVERSION DES ÉLEVATIONS. Includes a scale bar for elevations in feet and meters, and a note about the magnetic bearing.