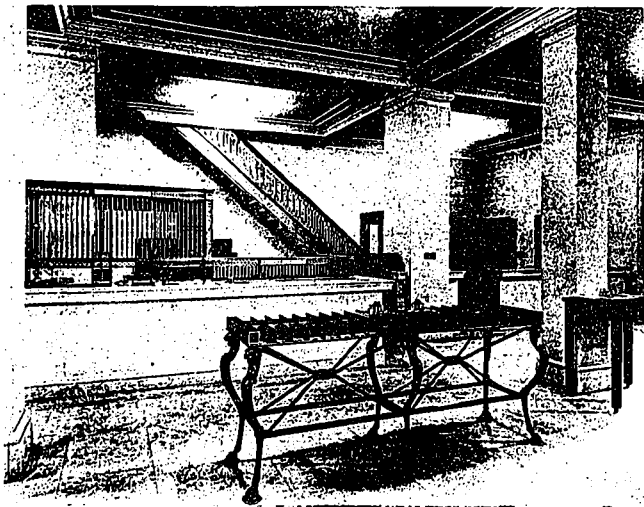


DETAIL OF MEZZANINE CEILING, NORTH AND SOUTH ENDS OF BANKING ROOM.

blue centre and three-foot border of patterned design in browns, greys and greens. At either end are two doorways with delicately carved consoles supporting pediments; while in the centre of one side is an attractive fireplace of purplish grey Formosa marble with a tapestry

brick lining and hearth of square tiling. The ceiling consists of an elaborate design after the Renaissance period, lending a striking effect to the tout ensemble. All the relief work leads from the acanthus scroll in each corner up to the inside border of sharply cut flowers, fruit and



DETAIL IN SAVINGS BANK DEPARTMENT.



OFFICIALS' PLATFORM ON MAIN FLOOR.