

# THE CANADIAN ILLUSTRATED NEWS.



Vol. I—No. 11.]

HAMILTON, C.W., SATURDAY, JANUARY 24, 1863.

[35 PER ANNUM, IN ADVANCE  
SINGLE COPIES 6 CENTS]

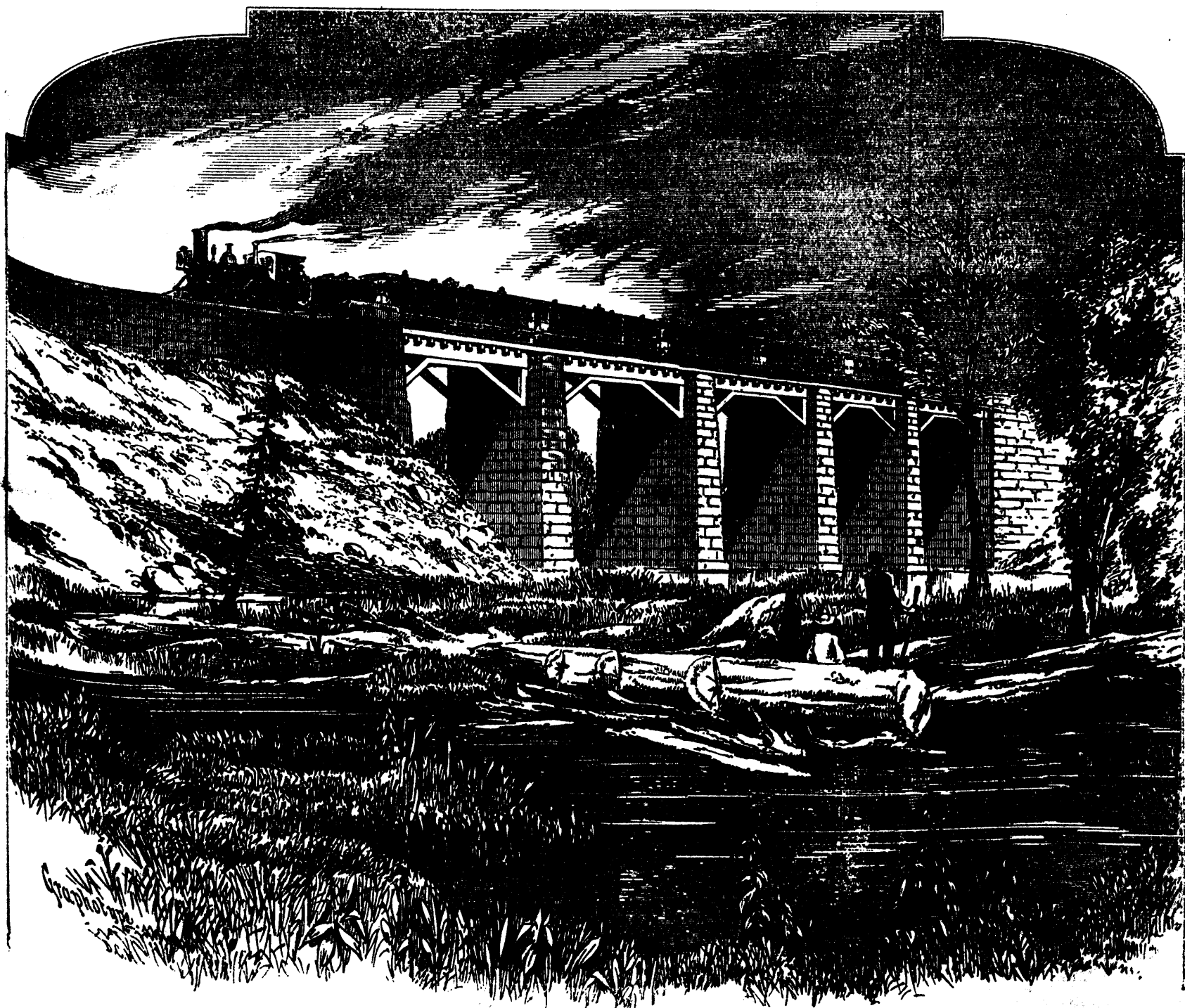
## RAILROAD BRIDGE OVER THE RIDEAU RIVER.

The days of stage coaches have come to an end, and everywhere is to be heard the snorting of the iron horse, and the shrill blast of the steam whistle, warning the thoughtless of their danger, if they have ventured upon his path. The age will be satisfied with nothing

less. Distance must be abridged, no matter what the labor or the expense. It is not, however, to speak of them in a financial point of view, or whether they have not been sometimes introduced, where the old system might have sufficed, but rather to illustrate the difficulties which had to be met and overcome before the new system of locomotion could be brought into operation.

The bridge which spans the Rideau can by no means compare with some other works of the same kind within the Provinces, and yet it has required a large amount of skill and labor to construct it. It is situated in the vicinity of Smith's Falls, in the Eastern corner of the township of North Elmsley, and about 32 miles from Brockville. The river, which it spans, is about 116

miles in length, and disembogues into the River Ottawa, at the city of the same name. There is nothing peculiar in the construction of the bridge, other than what is shown in the engraving; but it serves to illustrate some of the obstacles which have been overcome in a country whose history is but of yesterday.



RAILROAD BRIDGE ACROSS THE RIDEAU RIVER NEAR SMITH'S FALLS.