

HUMOUROUS.

ALGY (at the door): I—aw, bless my soul, Miss Gushly! I believe I've forgotten something. Lemme see— Miss Gushly: Coat—hat—cane? Why, you have them all, Mr. Baboony. Algy: Aw, yaas; but—but—Miss Gushly—dear Edith—I fawgot to awsk—will you—will you be my wife.

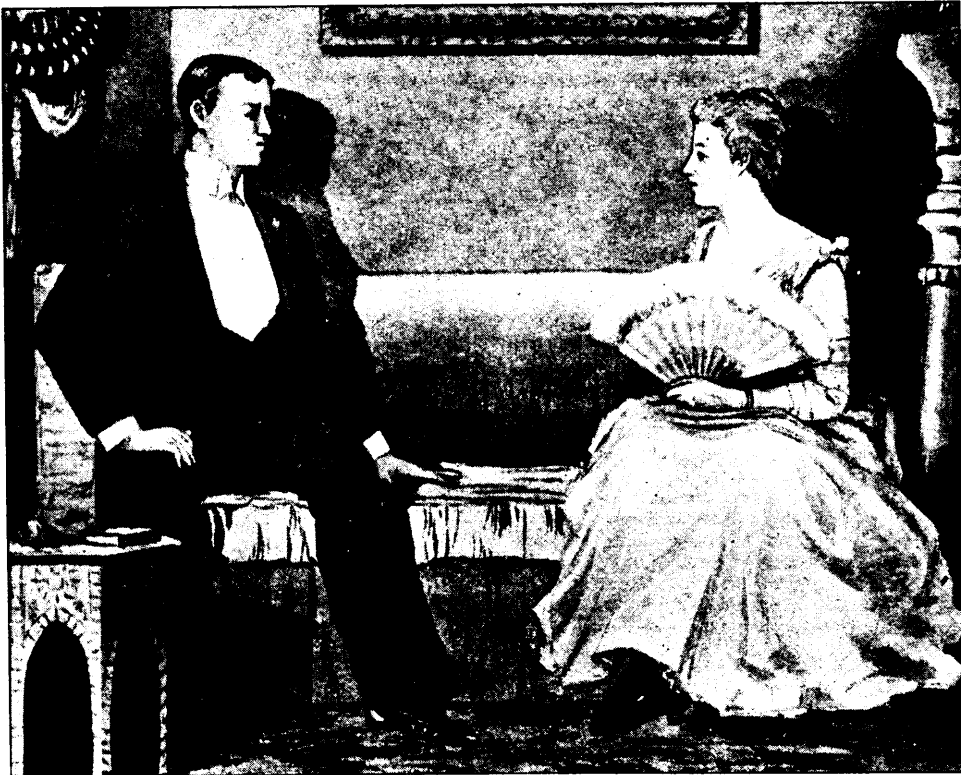
ENFANT TERRIBLE: Pa, where does the wind blow to? Pa (who is absorbed in his newspaper): North, south, east'n west. Enfant Terrible (after a moment's profound thought): But what does it do when it gets there? Pa (disgusted): Mary, take this youngster up to the nursery and keep him there. Exit enfant terrible in tears.

A WISE BIRD.—Customer: I've been cheated. I thought you said this parrot would talk. Bird Fancier: No, sir. What I said was that he had been brought up in the company of learned men, and was full of philosophy and scholarship. Of course, he don't talk. Mere idle words have no attraction for him. But he's a remarkable parrot, because he's a great thinker.

In a Perthshire parish a young woman went to join the church. She had never been to school, and could not say the Shorter Catechism. The first question the minister asked her was, "Can you tell me who brought you out of the land of Egypt and out of the house of bondage?" Her reply was, "Weel, sir, that's just the way lees spread; for I was never over the Brig of Cally in my life."

AN ACTUAL OCCURRENCE?—A leading society woman in Washington recently gave a large dinner party in honour of the polished and courtly members of the Chinese legation. As soon as they were seated at table she horrified her other guests by turning to one of the Chinamen and saying, indulgently:—"John likee Melicca?" Misinterpreting his look of disgust, she continued, "Ah, John no speakee Englishee."

ROTHESAY, one of the most popular of Scottish watering-places, was so full during the season that there was no room for human beings, much less inferior animals. A well-known member of London society telegraphed from Edinburgh to Rothesay one day, asking if he could be taken in, prepaying the reply. After some time the answer came, "No accommodation for dogs." The face of the tourist was a study; his remarks anything but parliamentary. Finally his original telegram was produced. It ran: "Secure rooms for wife and self. Five days." It was the last word which had done the mischief. "Days" can so easily be turned into "dogs" in the telegraph office!



THE BASHFUL SUITOR.

"Miss Flora, if I only had the courage to tell you—but I may say—I am sure, that never before, did any young man, have such a longing, as I have had, since I know you, for a—for a—for a *mother-in-law*."

CANADIAN PACIFIC RY.

Commencing December 29th, 1889.

TRAINS LEAVE MONTREAL

From Windsor Street Station:
 FOR SHERBROOKE—4.00 p.m. and 7.35 p.m.
 FOR ST. JOHNS, Farnham, etc., *9.00 a.m., 4.00 p.m., *8.15 p.m., *7.35 p.m.
 FOR BOSTON, †Portland, Manchester, etc., *9.00 a.m. and *8.15 p.m.
 FOR ST. JOHN, N.B. and Halifax, N.S. *7.35 p.m.
 FOR NEWPORT—*9.00 a.m., 4.00 p.m., and *8.15 p.m.
 FOR TORONTO, Smith's Falls, Peterboro, Brockville, Kingston, *9.20 a.m. For Smith's Falls, Kingston, Toronto, Detroit, Chicago, etc., *8.45 p.m.
 FOR OTTAWA and Buckingham, *10.00 a.m. and 4.25 p.m.
 FOR SAULT STE. MARIE, St. Paul, Minneapolis, etc., †10.00 a.m.
 FOR VAUDREUIL, WINCHESTER, ETC.,—*9.20 a.m. and *8.45 p.m.

From Dalhousie Square Station:

FOR QUEBEC,—*8.10 a.m., (*3.30 p.m. Sundays only) and *10.00 p.m. For points on Intercolonial Ry. to Campbellton N.B., *10.00 p.m.
 FOR THREE RIVERS,—*8.10 a.m., (*3.30 p.m. Sundays only) 5.00 p.m. and *10.00 p.m.
 FOR JOLIETTE, St. Felix de Valois, St. Gabriel, etc.,—5.00 p.m.
 FOR OTTAWA,—*8.50 a.m., 4.40 p.m., *8.40 p.m.
 FOR WINNIPEG and Vancouver,—*8.40 p.m.
 FOR ST. JEROME, St. Lin and St. Eustache, 5.30 p.m.
 FOR ST. ROSE and Ste. Therese, and intermediate stations—3.00 p.m., 4.40 p.m., 5.30 p.m. Saturdays only, 1.30 p.m., instead of 3.00 p.m.

From Bonaventure Station:

FOR CHAMBLY and Marieville, etc., 3.40 p.m., from St. Lambert, connecting with Grand Trunk 3.15 p.m. train from Bonaventure Station.
 FOR CHAMBLY and Marieville, etc., 5.00 p.m.

† Except Saturdays.
 * Run daily, Sundays included. Other trains week days only, unless otherwise shown.
 * Parlor and Sleeping Cars on trains so marked.
 † No connection for Portland with this train leaving Montreal, Saturdays.
 American Customs Officer at Windsor and Dalhousie Sq. stations to examine baggage destined for the United States.

TICKET OFFICES } 266 ST. JAMES STREET,
 Windsor and Balmoral Hotels.
 Windsor Street and Dalhousie Sq. Stations.

Confederation Life

TORONTO.

SECURITY.

THE HOME CO'Y

Satisfaction.

PARQUET FLOORING

BY TEES & CO.,
 THE DESK MAKERS,
 300 ST. JAMES STREET, MONTREAL.

Inlaid Flooring of every description: Elegant and durable. See our REVOLVING BOOKCASES.

CASTOR-FLUID

Registered—A delightfully refreshing preparation for the hair. Should be used daily. Keeps the scalp healthy, prevents dandruff, promotes the growth. A perfect hair dressing for the family, 25c per bottle.

HENRY R. GRAY, Chemist,
 144 St. Lawrence Main Street.

Laugh and Grow Fat

at Christmas Time!

The 20 wittiest books ever written are, I think:—
 (20) The Laird of Logan, 50c.; (19) Artemus Ward, 75c. (18) Jeemes Kaye, 35c.; (17) Father Prout, (probably Dean Swift's Son) \$1.00; (16) Cooper's Eve, Effingham and other novels, 15c. and \$1.00 each; (15) Marryatt's Peter Simple and other novels, 15c. and \$1.00; (14) Trollope's Barchester Towers, 65c.; (13) Sheridan, 30c.; (12) Hudibras, 60c.; (11) Pope, \$1.00; (10) Junius, \$1.00; (9) Thackeray's Rose and Ring, \$1.00 (his works complete \$9.00); (8) Don Quixote, 35c. and \$1.00; (7) Goldsmith, \$1.00; (6) Dickens' Works, complete, \$4.00 and \$7.00; (5) Lamb's Elias, \$1.00, Life and Works, \$3.75; (4) Cochin's Molière; (3) Swift, \$1.50 and 75c.; (1) Shakespeare, 35c. to \$20, order the \$2.50 edition. And the best place to order these books at once, by mail, is of

W. DRYSDALE & CO.

232 St. James St., Montreal.

GLACIER WINDOW DECORATION.

An Effective Substitute for Stained Glass
 At a Fraction of the Cost.
 GEO. C. DE ZOUCHE & SONS, AGENTS.
 PAPER HANGING AND WINDOW SHADES,
 1735 Notre Dame Street, MONTREAL.

ROOFING

Slate, Metal and Composition, Galvanized Iron Corncing, Skylights, and Metal Works of every description made to order.

GEORGE W. REED,
 Slate, Metal and Gravel Roofer,
 783 & 785 CRAIG ST.
 MONTREAL.

INVALUABLE TO LADIES.



MARIE DU BOYERS'
 Specialities to Toilet & Complexion.

Guaranteed Non-Injurious.

Famphlet on "Beauty," post free on application to MARIE DU BOYER, 41, NEW BOND STREET, LONDON, W.

NOTE:—Beware of common inferior imitations offered by unscrupulous traders for the sake of increased profit.



HOMESTEAD REGULATIONS.

All even numbered sections, excepting 8 and 26, are open for homestead and pre-emption entry.

ENTRY.

Entry may be made personally at the local land office in which the land to be taken is situate, or if the homesteader desires, he may, on application to the Minister of the Interior, Ottawa, or the Commissioner of Dominion Lands, Winnipeg, receive authority for some one near the local office to make the entry for him.

DUTIES.

Under the present law homestead duties may be performed in three ways:

1. Three years' cultivation and residence, during which period the settler may not be absent for more than six months in any one year without forfeiting the entry.

2. Residence for three years within two miles of the homestead quarter section and afterwards next prior to application for patent, residing for 3 months in a habitable house erected upon it. Ten acres must be broken the first year after entry, 15 acres additional in the second, and 15 in the third year; 10 acres to be in crop the second year, and 25 acres the third year.

3. A settler may reside anywhere for the first two years, in the first year breaking 5 acres, in the second cropping said 5 acres and breaking additional 10 acres, also building a habitable house. The entry is forfeited if residence is not commenced at the expiration of two years from date of entry. Thereafter the settler must reside upon and cultivate his homestead for at least six months in each year for three years.

APPLICATION FOR PATENT

may be made before the local agent, any homestead inspector, or the intelligence officer at Medicine Hat or Qu'Appelle Station.

Six months' notice must be given in writing to the Commissioner of Dominion Lands by a settler of his intention prior to making application for patent.

Intelligence offices are situate at Winnipeg, Qu'Appelle Station and Medicine Hat. Newly arrived immigrants will receive, at any of these offices, information as to the lands that are open for entry, and from the officers in charge, free of expense, advice and assistance in securing lands to suit them.

A SECOND HOMESTEAD

may be taken by any one who has received a homestead patent or a certificate of recommendation, countersigned by the Commissioner of Dominion Lands, upon application for patent made by him prior to the second day of June, 1887.

All communications having reference to lands under control of the Dominion Government, lying between the eastern boundary of Manitoba and the Pacific Coast, should be addressed to the Secretary of the Department of the Interior, Ottawa, or to H. H. Smith, Commissioner of Dominion Lands, Winnipeg, Manitoba.

A. M. BURGESS,
 Deputy Minister of the Interior.

Department of the Interior,
 Ottawa, Sept. 2, 1889.