

Correct solution received of Problem No. 328.

The first number of the new periodical, Brentano's Chess Monthly, has come to hand, and we feel convinced that this new magazine will meet with the ready support of chessplayers on both sides of the Atlantic.

It is got up apparently with every determination on the part of editors and publishers not to spare any expense either as regards chess matter, or chess illustrations. The embellishments are all that could be wished, and in this respect we must not forget the outside cover, which is attractive and highly chessical.

The number before us contains notes on chess matters of the day; sketches from the chess world, being a translation from the German of Ernst Falkbeer; an article by Alphonse Delaunoy, entitled "A Gallery of Great Masters of the Regence," besides useful intelligence from the best chess sources of the day.

The article from the pen of the old French writer is highly interesting, and we shall anticipate with pleasure a continuation of his sketches. Three portraits illustrate this part of the number. The game department is well filled, and fifteen problems will, we imagine, satisfy for the present, the keenest appetite for combinations of this nature.

Considering the manner in which every part of this new monthly has been attended to, so as to make it acceptable to the chess world, we are astonished at the price, which is only \$2.50 for the year.

We congratulate the chessplayers of Ottawa on the progress of chess in their city this winter. Since the last meeting of the Dominion Chess Association there in February last, their chess meetings and tournaments have testified to an enthusiasm existing among them, which, we trust, will be maintained, and set an example to be followed by other cities in the Dominion, where such activity would be truly refreshing.

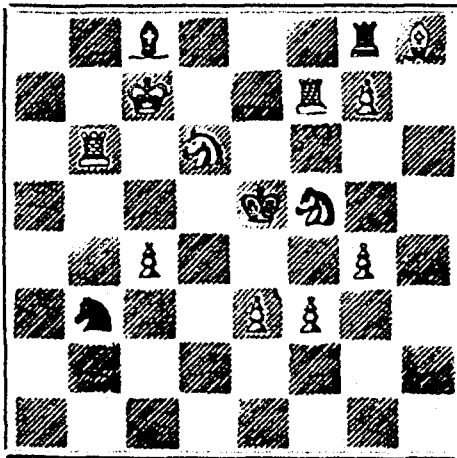
In an English newspaper, the Schoolmaster, devoted to educational matters, there appeared lately an advertisement for an assistant master for a collegiate school in the north of England.

Among the qualifications expected, "Classical English and Cricket" were said to be indispensable.

We are glad to see that instruction in modes of recreation and amusement is beginning to be recognized as forming a part of youthful training, as in this way there is a likelihood of their being practised in a scientific and beneficial manner. What about chess, however? Will a master be required to teach the royal game to the pupils in the same school, so that they may profitably, and at the same time agreeably, pass the long winter evenings, when cricket is no longer available?

Herr Zukertort has been giving exhibitions of his blindfold and simultaneous play at Huddersfield, Yorkshire, Eng., under the auspices of the Huddersfield Chess Club. Of eight players with whom he contended without sight of board or men, not one was able to score a game. His simultaneous encounter with twenty opponents was not concluded, owing to want of time. At a social gathering after the simultaneous play, in thanking the meeting for the kind way in which he had been received, he stated that the holding of annual meetings in connection with chess clubs was instrumental to a great extent in maintaining their prosperity.

PROBLEM No. 328. By J. Paul Taylor. BLACK.



WHITE. White to play and mate in two moves.

GAME 456111. THE CHESS MATCH AT ST. LOUIS. (From the Globe-Democrat.)

Ninth game in the match between Messrs. Judd and Mackenzie.

(Roy Lopez Knight's Game.)

- White.—(Mr. Judd.) 1. P to K 4 2. Kt to K B 3 3. B to Q Kt 5 4. Castles 5. B takes Kt 6. B takes B P 7. R to K 8. B takes Q P 9. B to Q Kt 3 10. P to K R 3 11. P takes Kt 12. R to K 4 (f) 13. Q to K 14. P to Q 3 15. Kt to Q B 3 16. Q to K 3 17. Q to K Kt 5 18. Kt takes B 19. Q takes K Kt P 20. Q to K B 7 21. B to K Kt 5 22. Q to Q 5 23. B takes Q 24. B takes Q B P 25. Kt takes B 26. Kt to K 4 27. B to K R 4 28. R to K 29. B to K Kt 3 30. Kt to B 5 (ch) 31. P to Q 4 32. B takes P 33. P to Q Kt 4 34. R takes R (ch) 35. P takes R

And Black resigns.

NOTES.

- (a) A somewhat risky defence to the Roy Lopez. (b) Black would obtain a much better development by Q P takes B, followed by Q to Q 5, should White capture Q P with Kt. (c) A bad move, which loses at least a Pawn. (d) If 7, Q to Q 3, White replies with Q to K 2, and if 7 P to K 5, the answer is P to Q 3. (e) Inferior to B to K Kt 5. The text move was made by Mr. M., with the intention of sacrificing the piece, but he failed to take into account White's twelfth move, which completely nullified the attack. (f) An excellent counterstroke, leaving nothing for it but retreat.

SOLUTIONS

Solution of Problem No. 327.

- 1. K to B 2 1. K to K 4 2. B to K B 8 2. Anything. 3. Mate accordingly.

Solution of Problem for Young Players No. 325

- WHITE. 1. R to K 6 1. K to Q B 4 2. K to K 4 2. P moves. 3. R mates.

PROBLEM FOR YOUNG PLAYERS, No. 326.

- White. K at K R 3 R at Q R 6 B at Q 5 B at Q Kt 2 Kt at K R 2 P at K R 4 and K B 3 Black. K at K B 4 R at K 4

White to play and mate in three moves.

Burdock BLOOD BITTERS advertisement with large stylized text and a small illustration of a man.

"NIL DESPERANDUM."

CRAY'S SPECIFIC MEDICINE

TRADE MARK. The Great English Remedy. An unfailing cure for Seminal Weakness, Spermatorrhea, Impotency, and all Diseases that follow as a sequence of Self-Abuse; as loss of Memory, Universal Lassitude, Dimness of Vision, Premature Old Age, and many other Diseases that lead to Insanity or Consumption and a Premature Grave. Full particulars in our pamphlet, which we desire to send free by mail to every one. The Specific Medicine is sold by all druggists at \$1 per package, or six packages for \$5, or will be sent free by mail on receipt of the money by addressing THE CRAY MEDICINE CO., Toronto, Ont., Canada.

Before Taking Pain in the Back. After Taking Dimness of Vision, Premature Old Age, and many other Diseases that lead to Insanity or Consumption and a Premature Grave. Full particulars in our pamphlet, which we desire to send free by mail to every one. The Specific Medicine is sold by all druggists at \$1 per package, or six packages for \$5, or will be sent free by mail on receipt of the money by addressing THE CRAY MEDICINE CO., Toronto, Ont., Canada.

\$66 a week in your own town. Terms and \$5 outfit free. Address H. HALLETT & Co., Portland, Maine.

Private Medical Dispensary.

(Established 1860), 25 GOULD STREET, TORONTO, ONT. Dr. Andrews' Purificants, Dr. Andrews' Female Pills, and all of Dr. A.'s celebrated remedies for private diseases, can be obtained at the Dispensary. All letters answered promptly, without charge, when stamp is enclosed. Communications confidential. Address, R. J. Andrews, M. S., Toronto, Ont.

6 Love Letters, 24 Illustrated Escort Cards, 6 Popular songs assorted, all 10c. West & Co., Westville, Ct.

British American BANK NOTE COMPANY, MONTREAL.

Incorporated by Letters Patent. Capital \$100,000.

General Engravers & Printers

Bank Notes, Bonds, Postage, Bill & Law Stamps, Revenue Stamps, Bills of Exchange, DRAFTS, DEPOSIT RECEIPTS, Promissory Notes, &c., &c., Executed in the Best Style of Steel Plate Engraving. Portraits a Specialty. G. B. BURLAND, President & Manager.

NORMAN'S ELECTRO-CURATIVE BELT INSTITUTION. (ESTABLISHED 1874.) Image of a belt with text: NORMAN'S ACME ELECTRIC APPLIANCES FOR ACUTE AND CHRONIC DISEASES. AND RESTORER OF THE NERVES & GENITAL ORGANS. A. NORMAN, 4 QUEEN STREET, TORONTO. A. NORMAN, Electrician. 4 QUEEN STREET EAST, TORONTO, ONT. CONSULTATION FREE. Large Circulars, with Testimonials, may be had on application.

LEA & PERRINS' SAUCE advertisement with image of a bottle and text: In consequence of Imitations of THE WORCESTERSHIRE SAUCE, which are calculated to deceive the Public, Lea and Perrins have to request that Purchasers see that the Label on every bottle bears their Signature thus— Lea Perrins without which no bottle of the original WORCESTERSHIRE SAUCE is genuine. Ask for LEA and PERRINS' Sauce, and see Name on Wrapper, Label, Bottle and Stopper. Wholesale and for Export by the Proprietors, Worcester; Crosse and Blackwell, London, &c., &c.; and by Grocers and Oilmen throughout the World. To be obtained of MESSRS. J. M. DOUGLASS & CO., MONTREAL; MESSRS. URCHART & CO., MONTREAL.

NOTICE TO GENTLEMEN. If you want fashionable and well-fitting garments made in the latest style, where a perfect fit and entire satisfaction is guaranteed, go to A. GRUNDLER, 302 ST. JOSEPH STREET, who was awarded FIRST PRIZE FOR CUSTOM TAILORING at the Dominion Exhibition.

BANK OF MONTREAL. Notice is hereby given that a Dividend of FOUR PER CENT, and a BONUS OF TWO PER CENT, upon the Paid-up Capital Stock of this Institution has been declared for the current half-year, and that the same will be payable at its Banking Houses in this city and at its Branches on and after WEDNESDAY, the 1st day of June next. The Transfer Books will be closed from the 17th to the 31st of May next, both days inclusive. The ANNUAL GENERAL MEETING of the Shareholders will be held at the Bank on MONDAY, the 5th DAY OF JUNE next. The Chair to be taken at ONE o'clock. By order of the Board, CHARLES F. SMITHERS, General Manager.

50 TORTOISE, Scroll, Wreath, Chromo, Motto and Floral Cards, 10c. G. S. Card Co., Northford, Ct.

The Scientific Canadian MECHANICS' MAGAZINE AND PATENT OFFICE RECORD A MONTHLY JOURNAL Devoted to the advancement and diffusion of Practical Science, and the Education of Mechanics. THE ONLY SCIENTIFIC AND MECHANICAL PAPER PUBLISHED IN THE DOMINION. PUBLISHED BY THE BURLAND LITHOGRAPHIC CO. 5 and 7 Bleury Street, Montreal. G. B. BURLAND General Manager. TERMS: One copy, one year, including postage... \$2.00 One copy, six months, including postage... 1.10 Subscriptions to be paid in ADVANCE. The following are our advertising rates:—For one monthly insertion, 10 cts. per line; for three months, 9 cts. per line; for six months, 8 cts. per line; for one year, 7 cts. per line; one page of illustration, including one column description, \$30; half-page of illustration, including half-column description, \$20; quarter-page of illustration, including quarter-column description, \$10. 10 per cent. off on cash payments. INVENTIONS AND MACHINERY, &c., or other matter of an original, useful, and instructive character, and suitable for subject matter in the columns of the MAGAZINE, and not as an advertisement, will be illustrated at very reduced rates. REMITTING MONEY.—All remittances of money should be in the form of postal-orders. When these are not available, send money by registered letters, checks or draft payable to our order. We can only undertake to become responsible for money when sent in either of the above ways. This journal is the only Scientific and Mechanical Monthly published in Canada, and its value as an advertising medium for all matter connected with our Manufactories, Foundries, and Machine Shops, and particularly to Inventors, is therefore apparent.

THE COOK'S FRIEND BAKING POWDER Has become a Household Word in the land, and is a HOUSEHOLD NECESSITY in every family where Economy and Health are studied. It is used for raising all kinds of Bread, Rolls, Pancakes, Griddle Cakes, &c., &c., and a small quantity used in Pie Crusts, Puddings, or other Pastry, will save half the usual shortening, and make the food more digestible. W. D. McLAREN, Union Mills, 55 College Street.

THE BURLAND LITHOGRAPHIC COMPANY (LIMITED) CAPITAL \$200,000, GENERAL Engravers, Lithographers, Printers AND PUBLISHERS, 3, 5, 7, 9 & 11 BLEURY STREET, MONTREAL. THIS ESTABLISHMENT has a capital equal to all the other Lithographic firms in the country, and is the largest and most complete Establishment of the kind in the Dominion of Canada, possessing all the latest improvements in machinery and appliances, comprising:— 12 POWER PRESSES 1 PATENT LABEL GLOSSING MACHINE, 1 STEAM POWER ELECTRIC MACHINE, 4 PHOTOGRAPHING MACHINES, 2 PHOTO-ENGRAVING MACHINES, Also CUTTING, PERFORATING, NUMBERING, EMBOSSING, COPPER PLATE PRINTING and all other Machinery required in a first class business. All kinds of ENGRAVING, LITHOGRAPHING, ELECTROTYPING AND TYPE PRINTING executed IN THE LATEST STYLE AND AT MODERATE PRICES PHOTO-ENGRAVING and LITHOGRAPHING from pen and ink drawings A SPECIALTY. The Company are also Proprietors and Publishers of the CANADIAN ILLUSTRATED NEWS, L'OPINION PUBLIQUE, and SCIENTIFIC CANADIAN. A large staff of Artists, Engravers, and Skilled Workmen in every Department. Orders by mail attended to with Punctuality; and prices the same as if given personally. G. B. BURLAND, MANAGER.