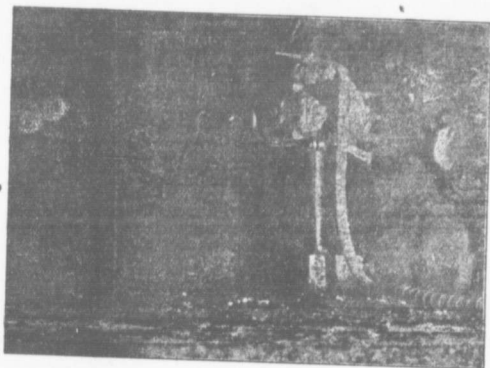


# The "HARDY PUNCHER"



## RADIAL Coal Cutter.

(1911 Model)

Completely eclipses all imitations.

It has attained a speed of 180 square feet per hour  
- 15 feet wide x 6 feet deep in 30 minutes

**THIS MACHINE HAS MINED  
AS MANY AS SIX ROOMS IN A SHIFT**

For Mining in Flat or Pitching Veins, taking out  
Dirt Bands, etc., it is without a rival.

It is unquestionably the most Durable, Reliable,  
Fastest, and Handiest Radial Coal Cutter made.

**THE HARDY PATENT PICK CO. LTD.**

SHEFFIELD, England.

**AGENTS - Thompson & Sutherland.**

NORTH SYDNEY.