

CHESS.

Solution to problem No. 1, B to Kt. Solved by C. W. L. and J. W. Wallace.

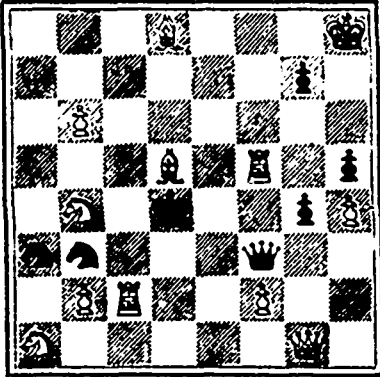
Additional solutions of problem No. 112, omitted in our last, received from C. W. L. and Mrs. H. Moseley.

PROBLEM NO. 3.

By C. R. Lee, Stretford.

First prize two-mover in the *Manchester Weekly Times' Problem Tourney*. *Montreal Gazette*.

BLACK 7 pieces.



WHITE 12 pieces.

White to play and mate in 2 moves

GAME NO. 3.

For the following sparkling little game, played in the tenth round, Nov. 18, 1889, Mr. Bird was awarded the prize for brilliancy in the recent masters' tournament of the British Chess Association.

BIRD'S OPENING.

- | WHITE | BLACK |
|--------------------|--------------------|
| Mr. H. E. Bird. | Mr. N. T. Miniati. |
| 1 P to KB4 | P to Q4 |
| 2 Kk to B3 | Kk to B3 |
| 3 P to K3 | P to K3 |
| 4 P to Qk13 | P to Qk13 |
| 5 B to Q3 a | B to K2 |
| 6 B to K12 | B to K2 |
| 7 Castles | Kt to B3 |
| 8 P to B3 | Q to B2 |
| 9 P to B4 | P takes P |
| 10 P takes P | P to Qk13 |
| 11 Kt to B3 | B to K2 |
| 12 B to K2 b | P to KR3 |
| 13 Q to K | Castles (QR) c |
| 14 Kt to QR4 | QR to Kt d |
| 15 R to Kt | Kt to Q2 |
| 16 Kt to K5 | Kt (fr. B3) tks Kt |
| 17 B takes Kt | Q to B3 e |
| 18 Kt tks P (ch) f | Kt tks Kt g |
| 19 B to KB3 | Kt to Q4 h |
| 20 P takes Kt | P takes P |
| 21 P to Q3 | P to KB3 |
| 22 B to Kt4 ch | K to Q |
| 23 Q to R5 ch | K to K |
| 24 B to B7 | B to R |
| 25 R to B2 | K to B2 |
| 26 KR to Kt2 i | P to KR4 |
| 27 B to B5 | r to Q5 |
| 28 P to K4 | B to Q3 |
| 29 B takes B | Q takes B |
| 30 R to Kt6 | B to B3 |
| 31 Q takes RP j | R to R |
| 32 R to Kt7 ch | B takes R |
| 33 R takes B ch | Q to K2 |
| 34 Q to K6 ch | K to K |
| 35 Q takes Q mate. | |

NOTES.

a A favorite move of Mr. Bird's, who plays this opening with great predilection and to perfection.

b Perceiving Black's intention to castle on the Q's side, the B is better placed at K2, for it can be brought to KB3, where it occupies an unobstructed diagonal.

c We confess that it is a daring

London, Eng.,
67 Queen Victoria St.

Bradford, Eng.,
26 Bentley St.

New York,
362 Broadway.

WHOLESALE DRY GOODS.

MURDOCHS' NEPHEWS

Have much pleasure in announcing to the Public and their Customers in particular, that their representatives are now on their respective Routes with complete lines of Samples for the

SPRING TRADE OF 1890.

DEPARTMENTS.

- Woollens,
- Dress Goods,
- Domestic Goods,
- Prints,
- Carpets,
- Linens,
- Floor Oil Cloths,
- Haberdashery,
- Millinery,
- Fancy Goods.
- Tailors' Trimmings & Cloths, etc.

As our entire Stock for the coming Season has been purchased previous to the recent advances, we will give the Trade all the advantages of such, and can assure them not a House in Canada can sell as Cheap.

MURDOCHS' NEPHEWS,

HALIFAX, N. S.

HOLLIS STREET.

venture to castle on this side with an open (adverse) QKt file and the threat of White's KB to B3 after the removal of the Kk.

d All this is well-intended and very bold on the part of the younger master; but the counter attack is hardly to be expected to succeed against the veteran.

e 17 * * B to Q3 is the right move here. Obviously, if 17 * * Kt takes B, then 18 Kt takes P ch follows.

f A brilliant and to all appearances a sound conception.

g Compulsory. If 18 * * K moves; 19 B to KB3 wins the Q.

h Equally compulsory.

i Obviously, white could win the Q by 26 R to K16; but he would have to give more for it than necessary in such a powerful position.

j And now comes the brilliant termination to this pretty game.—*London Field*.

DRAUGHTS-CHECKERS

SOLUTIONS.

PROBLEM No. 149.—The position was:—Black men 11, 12 14, 16, 19, 20; white men 7, 23, 25, 26, 27, 28; black to play and win

19-24 16-30 1-11-15 19-24
28 19 25 21 3 7 23 19
14-18 30-26 15-19 26-23
23 14 7 3 27 23 b. wins.

VAR. I.

11-16, 14 9, 26-22, 27 23; drawn as in game 42

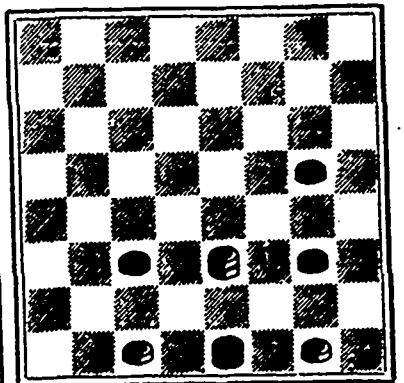
GAME XLIV—"DOUBLE CORNER."

By Mr. J. Lees, Dalwellington, in *Glasgow Herald*.

9-14	16-20	16-20	27-31
22 18	24 19	18 15	23 18
5-9	1-5	9-13	5-9
24 20	27 24	15 11	18 15
11-16	20-27	6-9	31-26
20 11	31 24	11 8	15 6
8-22	7-11	2-7	26-17
25 18	24 20	8 3	3 10
12-16	3-7	20-24	17-14
29 25	32 27	27 20	10 17
4-8	11-16	14-17	13-29
25 22	20 11	21 14	
8-12	7-16	9-27	drawn.
28 24	30 25	26 23	

PROBLEM No. 151.

From *The Acadian Recorder*.
Black men 16, 22, 24, kg. 31.



White men 30, 32, kg. 23.

Black to play and win.

Though a man ahead we do not think that everyone would win in actual play.

CHARLES MYETT, CARPENTER & BUILDER.

Roofing & Jobbing promptly attended to.

10 ARGYLE ST., Halifax.